

**DELAVAN LAKE SANITARY DISTRICT
ADMINISTRATOR'S REPORT
DECEMBER ACTIVITY 2019**

ADMINISTRATION

Force main project is underway.

Lift Station #10 lost a meter reader and some controls is repaired.

Lift Station Wet Well Cleanings were completed for 2019.

2001 Jeep and 1996 Truck were sold.

Force main work began starting at Blue Gill Lane and working east as part of the first phase.

Lift station #6 rehab work has begun with exterior valve repair completed.

Meetings with City of Delavan, Lake Lawn Lodge, and a developer is in progress for possible site development and lift station changes at Lift Station #11 and possible changes to Highway 50.

Vehicles used on roadways are being evaluated for compliance with Wisconsin Statute 347 for proper amber warning lights. Corrections will be made accordingly.

Continued efforts to evaluate possible healthy lake projects in Jackson Creek and inlet are being carefully evaluated and worked on.

Lake will be drawn down about 4 to 6 inches to its winter elevations

Meetings are scheduled with DNR for February to discuss future lake projects such as weed harvesting and dredging.

Yearend projects and filing are getting started.

Desktops and servers are being upgraded to comply with Windows 10 environment and better accommodate wireless SCADA systems for monitoring 24/7/365.

SEWER SYSTEM OPERATIONS

Building Sewer Connections

New Connections for the Month - 1
Reconnections for the Month - 2
Disconnections for the Month - 2
Total Number of Structures Connected to Date - 3,102
Total ERU Count for the Month - 4,010

Operation and Maintenance

Average December Daily Wastewater Flow to WalCoMet - 664,260 gallons
Peak December Flow - 867,520 gallons
Diggers Requests Marked for the Month - 148
Emergency Call Outs - 3

The following charts are attached: *Wastewater Flow comparison with Precipitation for December, 2019*
Average Daily Wastewater Flow comparison with Peak Flow
Precipitation comparison with "normal"
Wastewater Flow comparison with "normal"
Environmental Data Summary
Daily Lake Elevation for December, 2019
Lake Elevation comparison with "normal"

Lake Monitoring/Lake Level

Precipitation Total for the Month - 2.35 inches
Above Normal - 0.20 inches
Ice On Date - January 11, 2019
Ice Off Date - March 27, 2019
Secchi Disc Reading Main Lake - 5.5 feet on 9/30/2019

See attached Lake Elevation Graph and Chart.

Lake Information

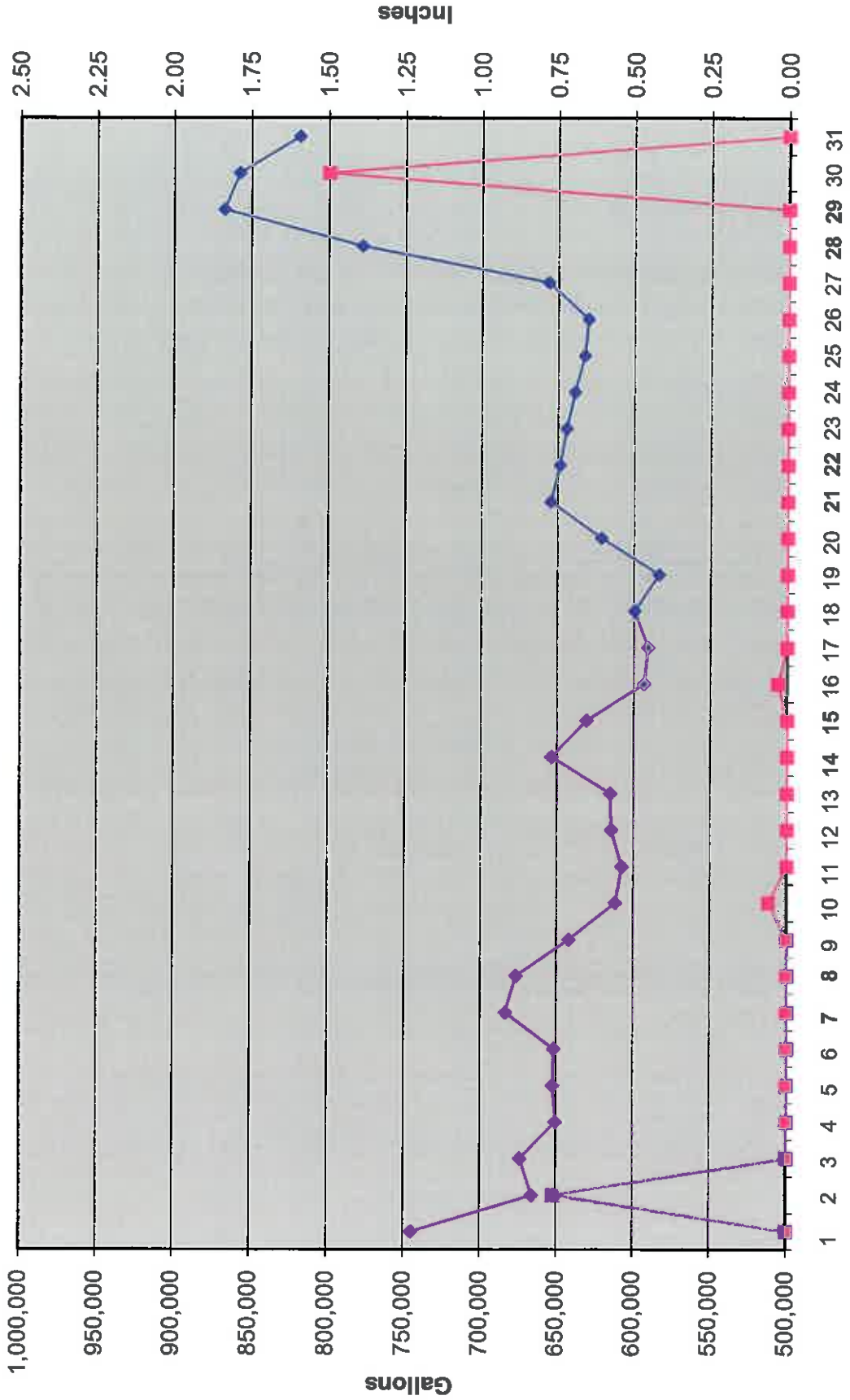
DNR Lake Level Goal - 927.86 feet
Average Lake Elevation - 927.58 feet
Number of Dam Inspections - 31

Lake Committee

The next meeting of the Lake Committee is scheduled for 7:00 P.M. on Wednesday, February 5, 2020 at the Town Hall.

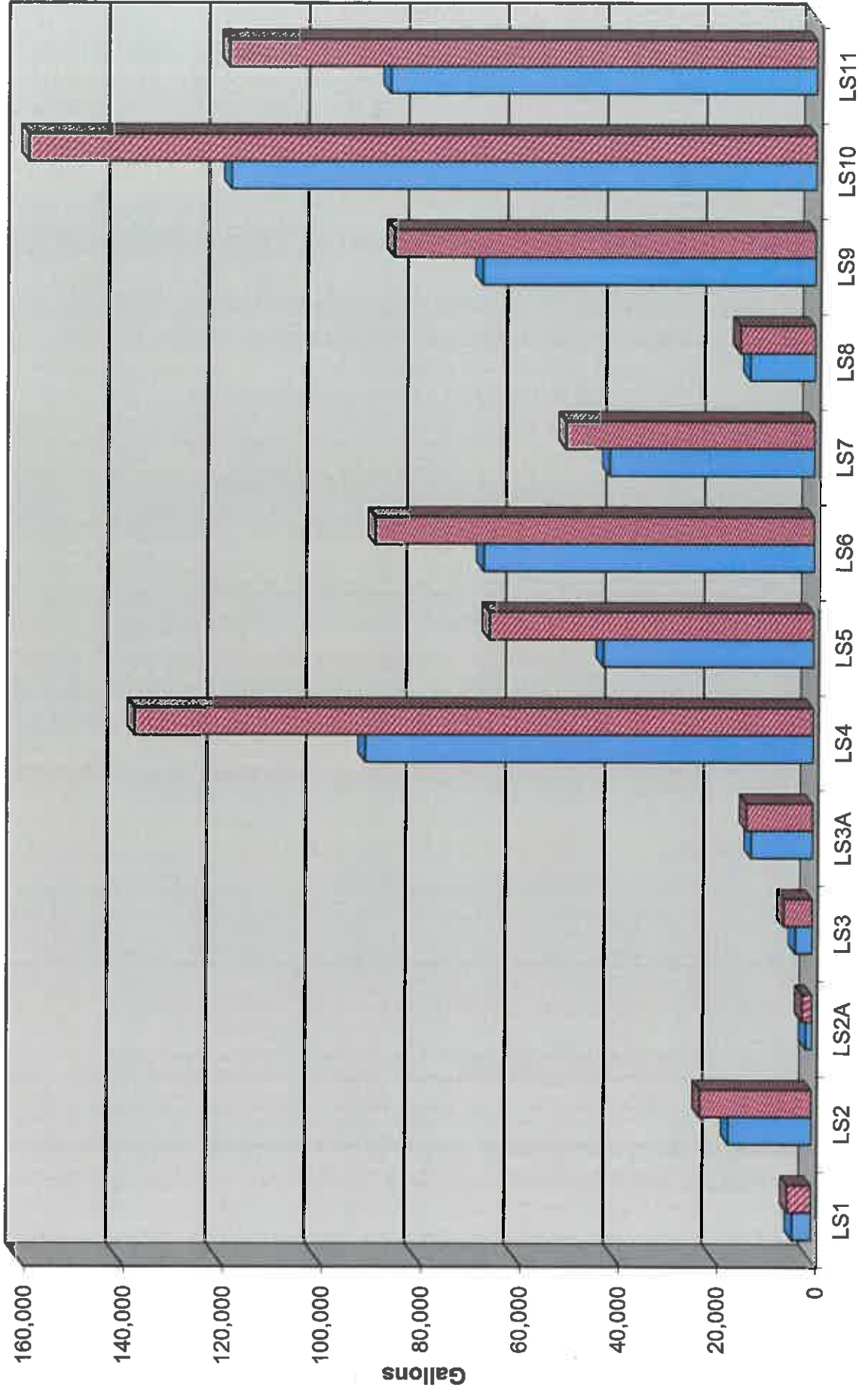
Attachments

Wastewater Flow/Precipitation - December, 2019

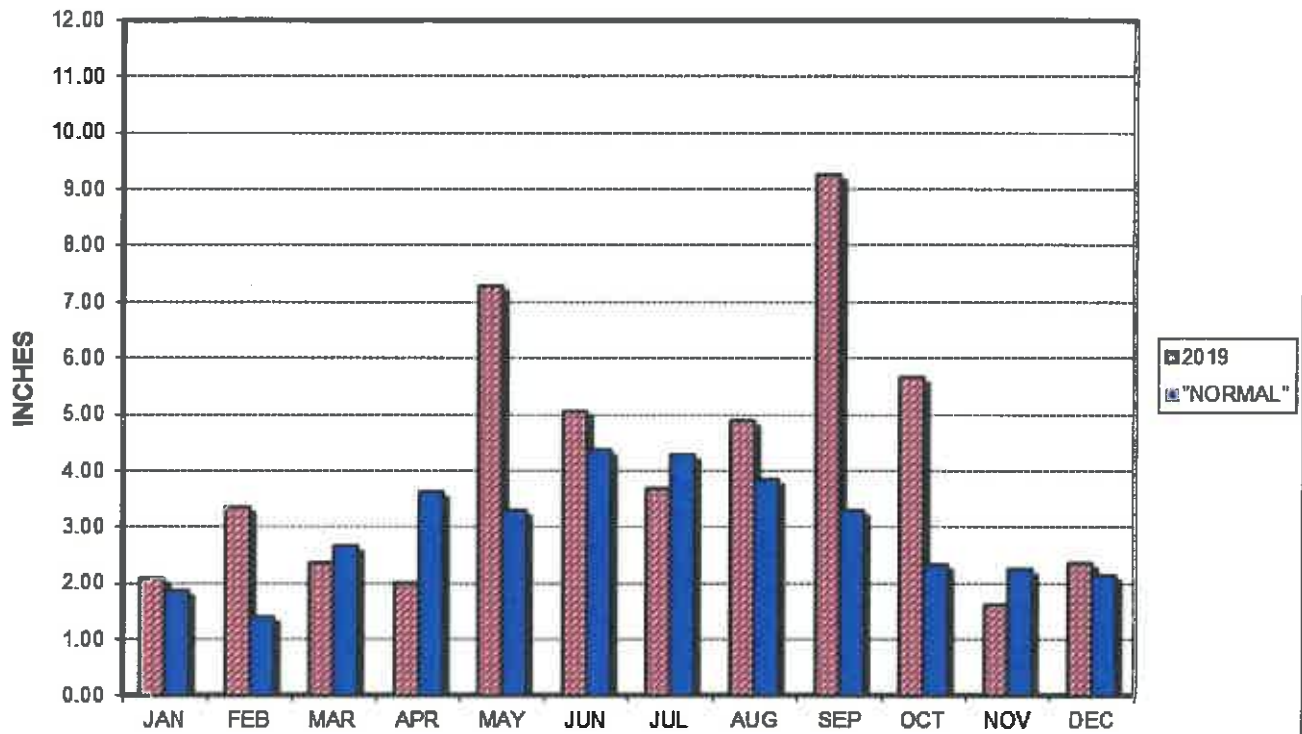


Average Daily Flow/Peak Flow by Area - December, 2019

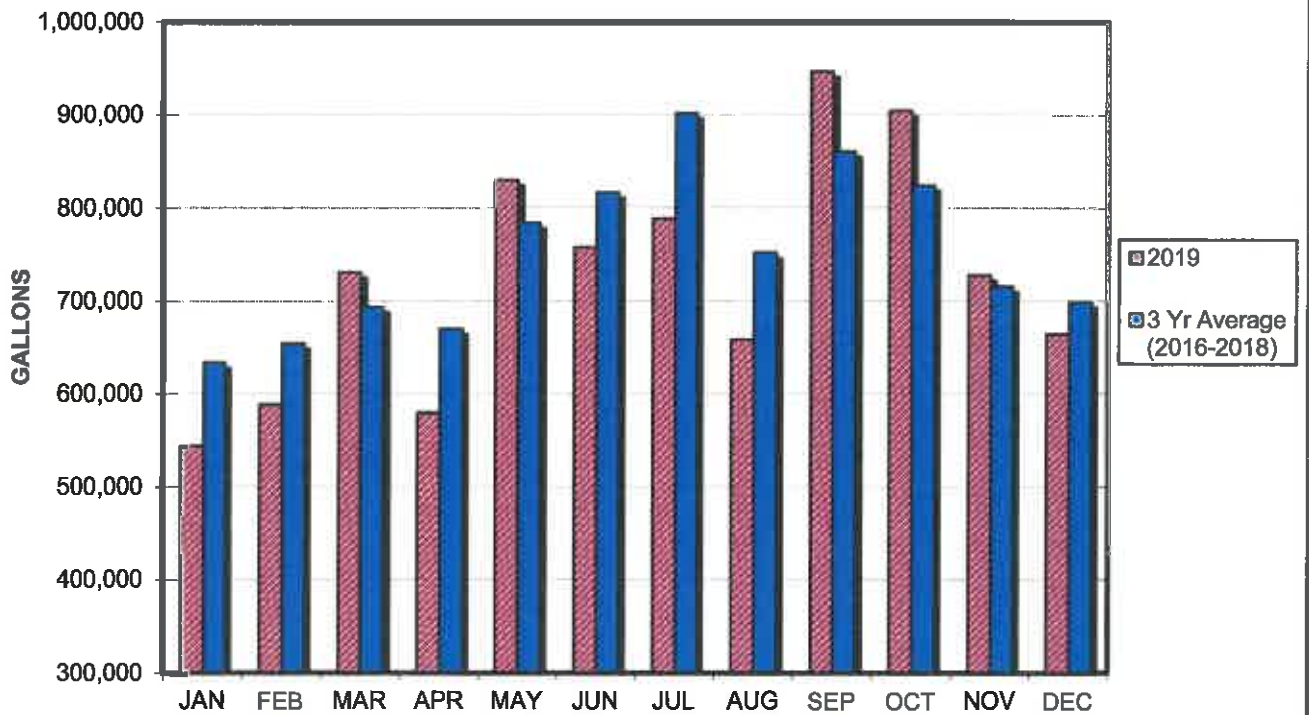
Average Peak



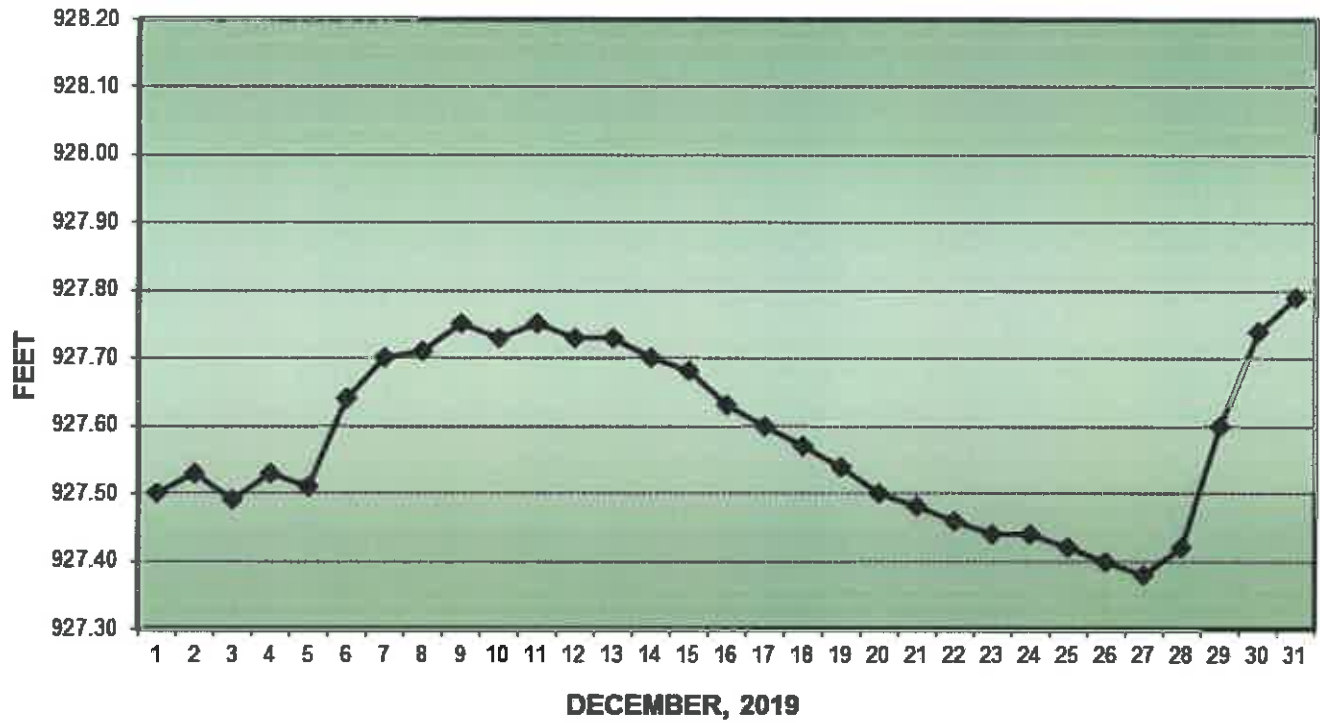
PRECIPITATION - DELAVAN LAKE, WI



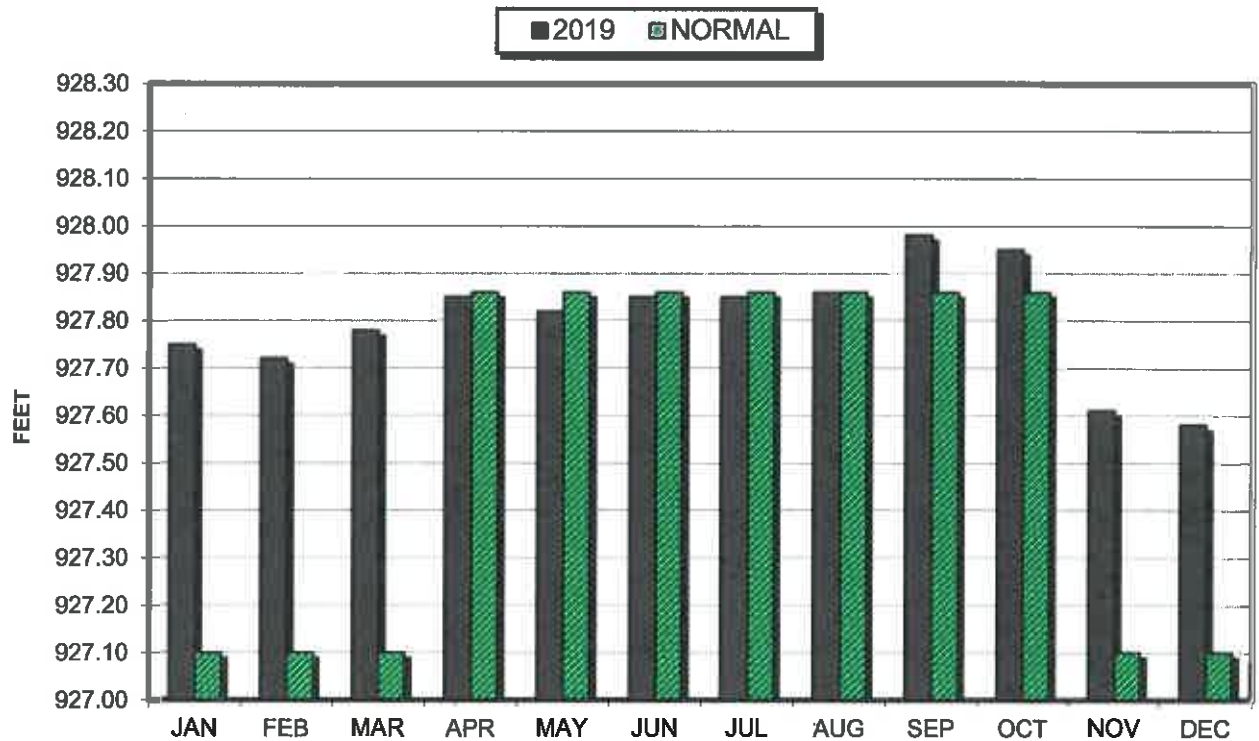
AVERAGE WASTEWATER FLOWS



LAKE ELEVATION - DELAVAN LAKE, WI



AVERAGE LAKE ELEVATION - DELAVAN LAKE, WI



**DATA SUMMARY
DELAVAN LAKE, WISCONSIN**

Month	Ice On Date	Ice Off Date	Air Temperature			Precipitation		Lake Water Temp.	Average Lake Elevation	Secchi Disc		Cubic Yards Harvested	
			Max.	Min.	Mean	Month (In. Inches)	Yr to Date (In. Inches)			Average (In. Feet)	Maximum (In. Feet)	Month	YTD
2017													
JAN			54	-2	26	2.49	2.49	-	927.71	-	-	-	-
FEB		2/24/17	68	10	39	2.53	5.02	-	927.61	-	-	-	-
MAR			75	11	32	2.88	7.90	-	927.66	-	-	-	-
APR			81	30	56	6.01	13.91	49	927.79	30.0	30.0	-	-
MAY			86	32	59	4.03	17.94	54	927.87	19.7	26.0	296	296
JUN			93	47	70	6.39	24.33	68	927.87	12.6	19.0	1047	1343
JUL			89	54	72	7.18	31.51	76	928.22	5.9	10.0	840	2183
AUG			84	44	64	1.64	33.15	73	927.87	6.2	7.0	1157	3340
SEP			94	40	67	0.27	33.42	72	927.77	6.1	9.0	113	3453
OCT			83	31	57	4.73	38.15	64	927.72	6.9	7.6	-	-
NOV			63	13	38	1.42	39.57	45	927.58	7.5	7.5	-	-
DEC	12/26/17		61	27	-7	0.10	39.67	-	927.64	-	-	-	-
2018													
JAN			54	-12	21	1.70	1.70	-	927.73	-	-	-	-
FEB			58	-11	24	1.83	3.53	-	927.81	-	-	-	-
MAR		3/24/18	57	15	36	0.76	4.29	-	927.54	-	-	-	-
APR			81	17	49	1.67	5.96	44	927.59	11.0	9.8	-	-
MAY			96	39	68	4.56	10.52	64	927.81	24.0	30.0	275	275
JUN			93	47	70	7.53	18.05	70	928.00	7.5	11.0	749	1024
JUL			91	52	72	2.11	20.16	78	927.80	7.5	11.4	1484	2508
AUG			91	53	72	6.95	27.11	78	927.85	6.8	7.5	1156	3664
SEP			91	36	64	7.37	34.48	59	927.93	8.2	12.0	531	4195
OCT			86	24	55	5.54	40.02	57	927.94	6.4	8.5	124	4319
NOV			52	15	34	1.50	41.52	-	927.80	-	-	-	-
DEC	12/10/18		50	11	31	2.14	43.66	-	927.71	-	-	-	-
2019													
JAN	1/11/19	1/8/19	50	-26	12	2.09	2.09	-	927.75	-	-	-	-
FEB			44	-4	20	3.35	5.44	-	927.72	-	-	-	-
MAR		3/27/19	62	-6	28	2.36	7.80	-	927.78	-	-	-	-
APR			79	19	49	2.01	9.81	42	927.86	11.0	11.5	-	-
MAY			80	34	57	7.29	17.10	59	927.82	23.8	26.0	112	112
JUN			92	46	69	5.05	22.15	69	927.85	15.3	20.0	695	807
JUL			92	54	73	3.68	25.83	78	927.85	9.0	12.5	1310	2117
AUG			87	51	69	4.89	30.72	78	927.86	7.3	8.5	1283	3400
SEP			85	48	67	9.26	39.98	71	927.98	5.8	8.0	359	3759
OCT			76	23	50	5.66	45.64	58	927.95	6.3	8.0	86	3845
NOV			53	5	24	1.62	47.26	-	927.63	-	-	-	-
DEC			55	6	25	2.35	49.61	-	927.58	-	-	-	-