

**DELAVAN LAKE SANITARY DISTRICT
ADMINISTRATOR'S REPORT
FEBRUARY ACTIVITY 2017**

ADMINISTRATION

Grant application was submitted for Healthy-Lakes projects.

Lift Station #2 is in final stages of design work for pump and control rehabilitation.

Lift Station #5 had a catastrophic failure to the electric lateral, transfer switch and generator. The station is currently provided with a portable generator.

Gate #3 of the Dam had a failure with the lifting mechanism and estimates are being gathered for the Town.

DLSD commission had a neighborhood meeting with citizens around Manor Lane and put together an AD-Hoc committee to look at options for plant harvesting.

Camera crew discovered another sewer main break and in Area #5 and have that scheduled for excavation repair the first week of March.

Brown's Channel Planning Grant was approved by the DNR.

ICE OFF is February 24, 2017

SEWER SYSTEM OPERATIONS

Building Sewer Connections

New Connections for the Month - 2

Reconnections for the Month - 0

Disconnections for the Month - 0

Total Number of Structures Connected to Date - 3,095

Total ERU Count for the Month - 4,013

Operation and Maintenance

Average February Daily Wastewater Flow to WalCoMet - 415,234 gallons

Peak February Flow - 515,104 gallons

Diggers Requests Marked for the Month - 21

Emergency Call Outs - 4

The following charts are attached: *Wastewater Flow comparison with Precipitation for February, 2017*
Average Daily Wastewater Flow comparison with Peak Flow
Precipitation comparison with "normal"
Wastewater Flow comparison with "normal"
Environmental Data Summary
Daily Lake Elevation for February, 2017
Lake Elevation comparison with "normal"

Lake Monitoring/Lake Level

Precipitation Total for the Month – 2.53 inches
Above Normal – 1.14 inches
Ice Off Date – February 24, 2017

See attached Lake Elevation Graph and Chart.

Lake Information

DNR Lake Level Goal – 927.86 feet
Average Lake Elevation – 927.61 feet
Number of Dam Inspections – 28

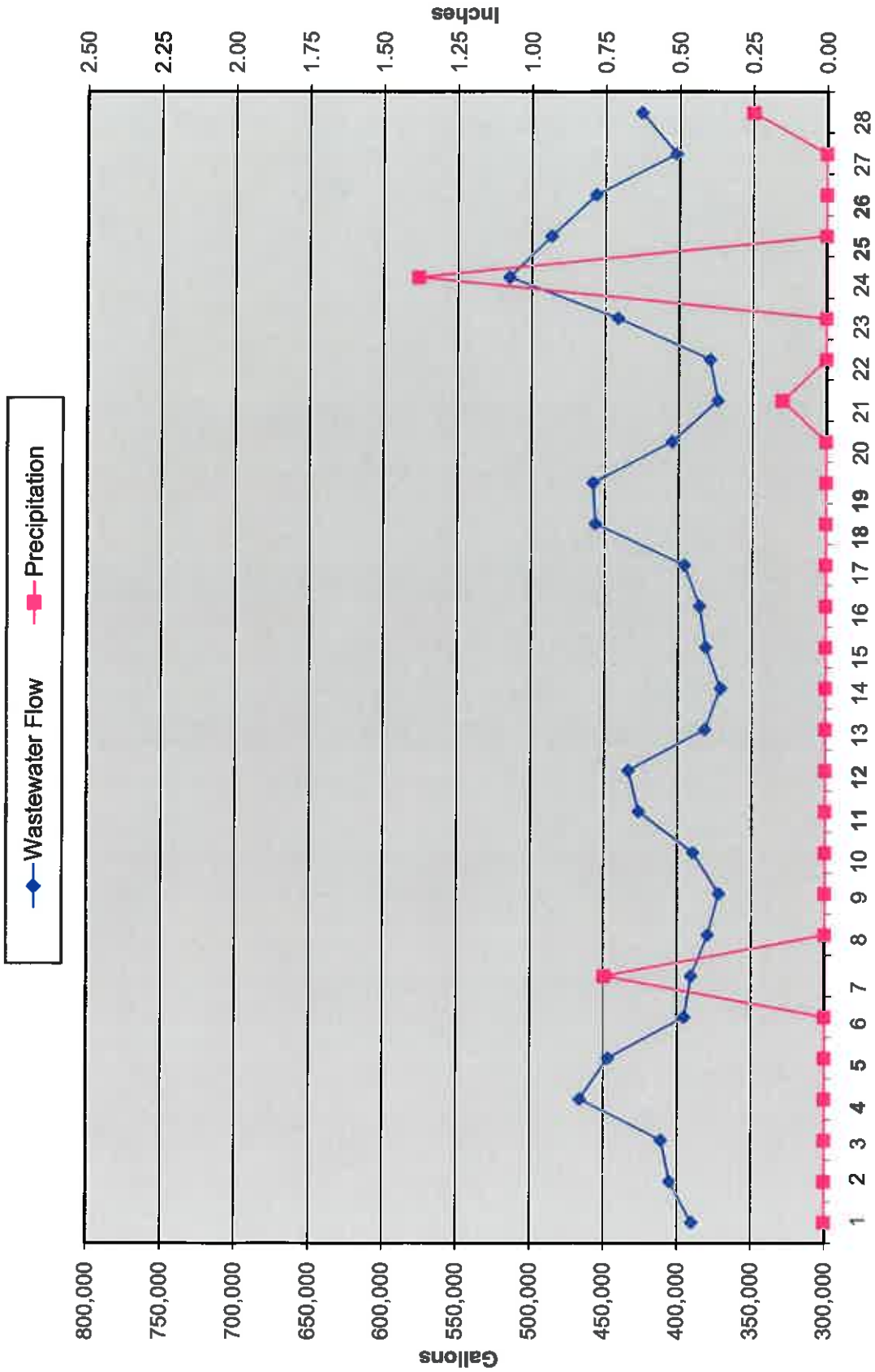
See attached Gate Setting Chart.

Lake Committee

The next meeting of the Lake Committee is scheduled for 7:00 P.M. on Wednesday, April 5th, 2017 at the Town Hall.

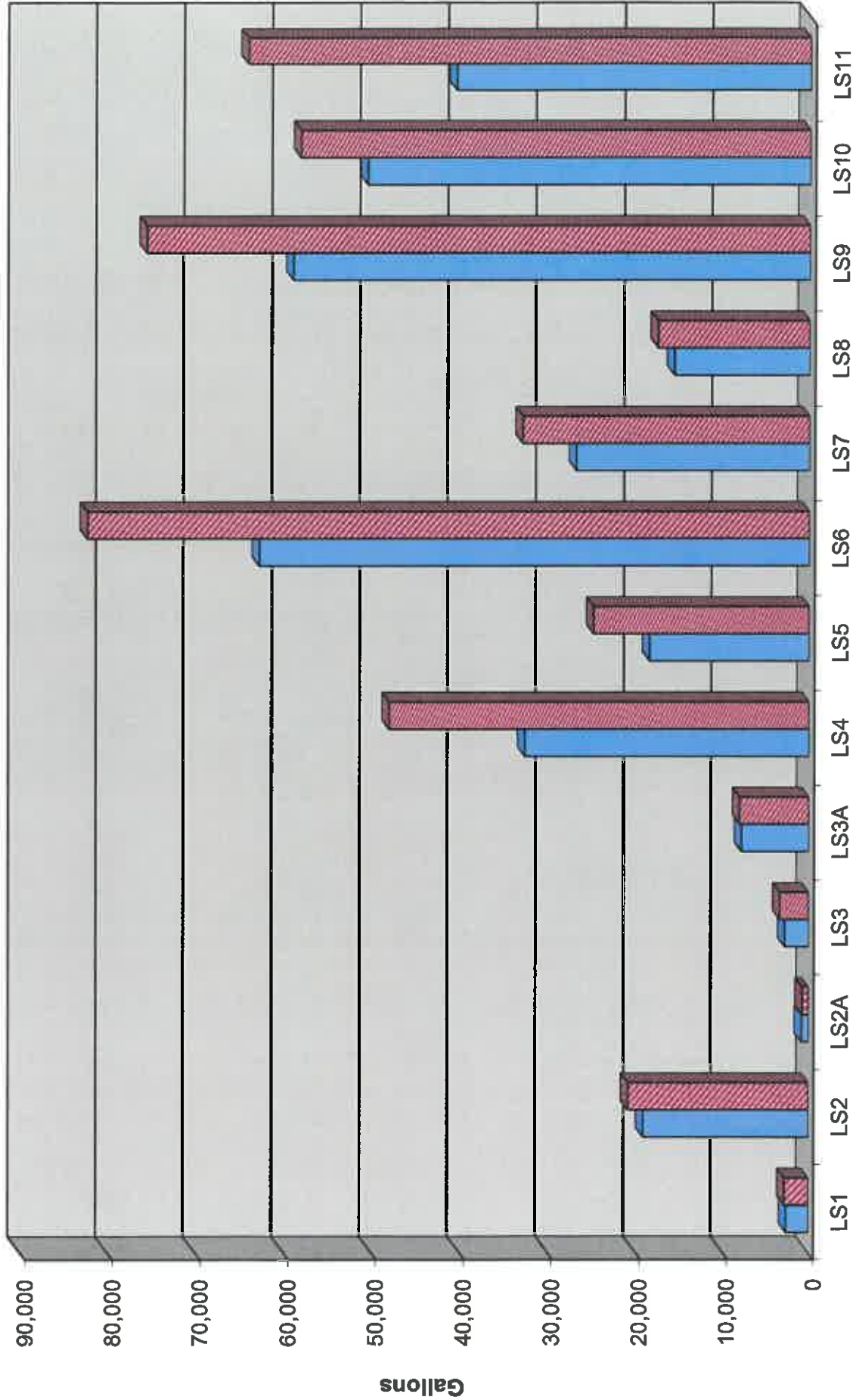
Attachments

Wastewater Flow/Precipitation - February, 2017

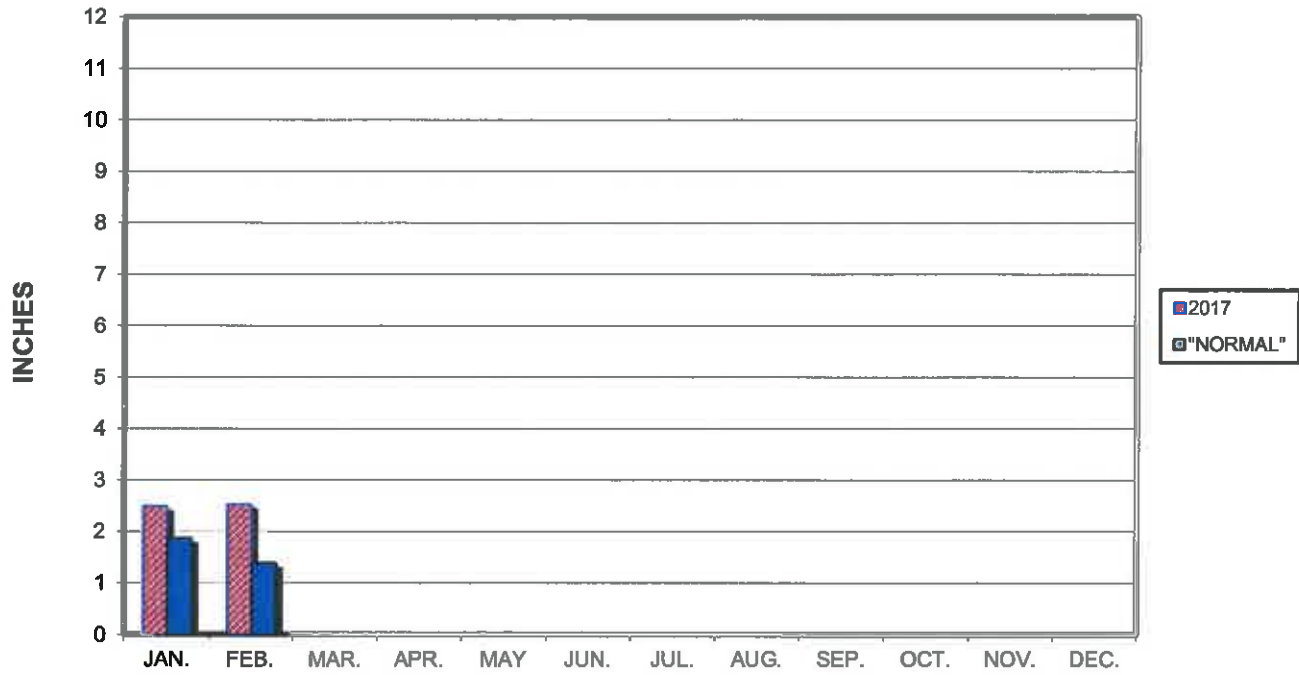


Average Daily Flow/Peak Flow by Area-February, 2017

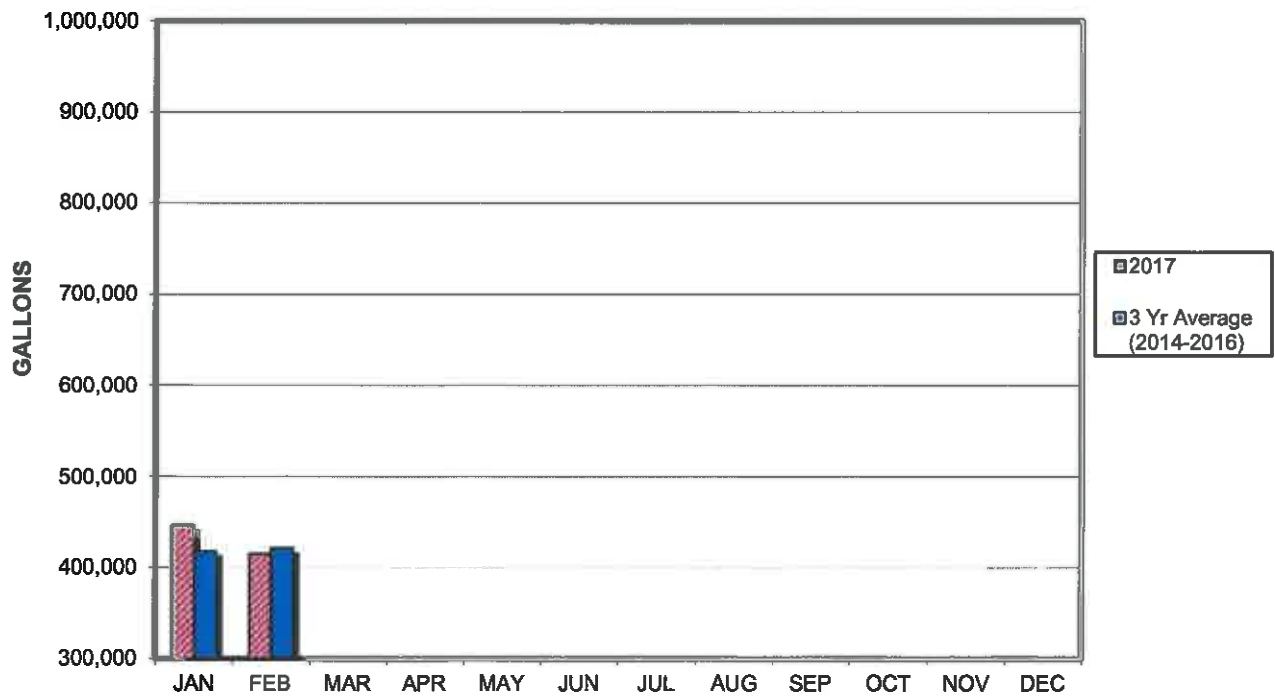
■ Average ■ Peak



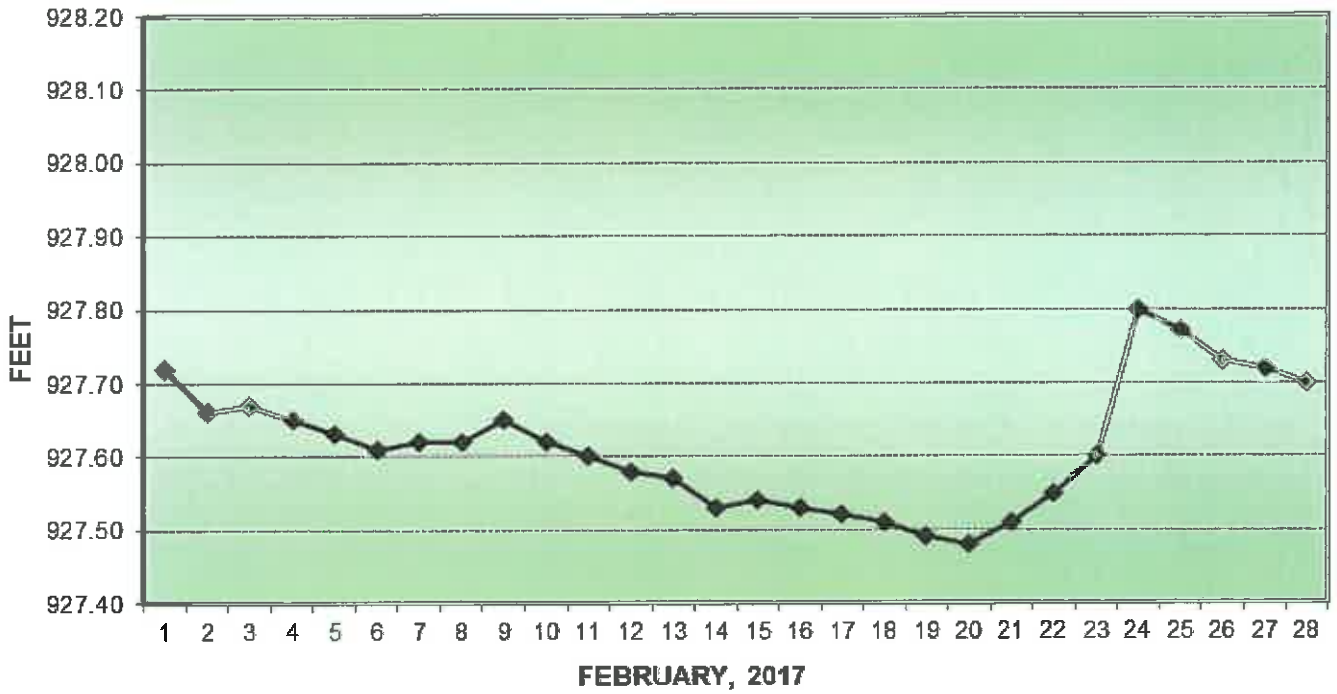
PRECIPITATION - DELAVAN LAKE, WI



AVERAGE WASTEWATER FLOWS



LAKE ELEVATION - DELAVAN LAKE, WI



AVERAGE LAKE ELEVATION - DELAVAN LAKE, WI

