

**DELA VAN LAKE SANITARY DISTRICT
ADMINISTRATOR'S REPORT
JUNE ACTIVITY 2025**

ADMINISTRATION

Generators went through oil changes and load testing.

Inlet Shore, Woodlawn Dr, Breezy Street, Delavan Dr. and Lincoln Rd had Linings put in.

Harvesters began clear cutting June 16th.

Revised easements completed for LS #7 project, meetings scheduled with owners to review and sign documents.

Wet well in LS #10 had a new transducer installed.

LS #7 Bid was opened and awarded to Mid-City.

Meetings with property owners for LS #3 project completed to finalize concept plans. Survey work completed and new easement descriptions getting drafted.

A special meeting held with SEWRPC regarding Villa Clare is in progress.

DLSD crew have been raising or repairing manholes prior to Town of Delavan Road projects.

Crew assisted WalCoMet for a failed force main with camera crews.

Geneva landings lateral collapsed.

LS #8 vault wet well wall coatings completed.

LS #10 hatch opening was increased in size for better access and improved floats as well as adding an improved bypass valve in the wet well.

Shores of Delavan sewer system presented to DLSD for final acceptance.

Channels were chemically treated.

Staff assisted police with a deceased animal removal in the water.

SEWER SYSTEM OPERATIONS

Building Sewer Connections

New Connections for the Month - 1
Reconnections for the Month – 0
Disconnections for the Month – 1
Total Number of Structures Connected to Date – 3,151
Total ERU Count for the Month – 4,070

Operation and Maintenance

Average June Daily Wastewater Flow to WalCoMet – 538,625 gallons
Peak June Flow – 842,440 gallons
Diggers Requests Marked for the Month – 98
Emergency Call Outs – 3

Lateral Leaks

Sump Pump Discharges - 4
Current Lateral Leaks - 51
Completed Lateral Leak Orders – 5

The following charts are attached: *Wastewater Flow comparison with Precipitation June, 2025*
Average Daily Wastewater Flow comparison with Peak Flow
Precipitation comparison with “normal”
Wastewater Flow comparison with “normal”
Environmental Data Summary
Daily Lake Elevation for June, 2025
Lake Elevation comparison with “normal”

Lake Monitoring/Lake Level

Precipitation Total for the Month – 4.16 inches
Below Normal – .22 inches
Ice On Date – January 7, 2025
Ice Off Date – March 14, 2025

Secchi Disc Reading Main Lake – 16.0 feet 6/12/2025

See attached Lake Elevation Graph and Chart.

Lake Information

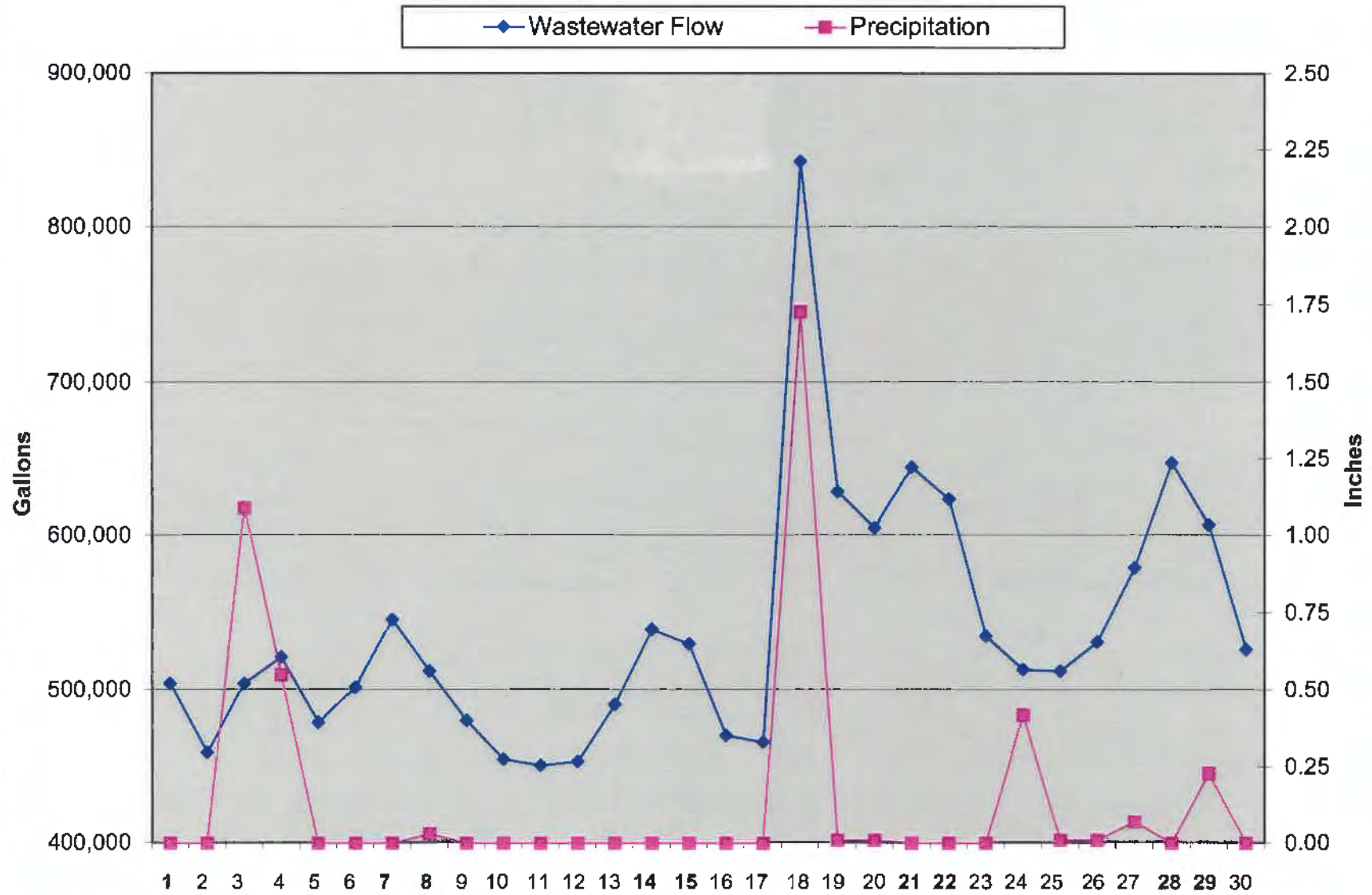
DNR Lake Level Goal – 927.86 feet
Average Lake Elevation – 927.90 feet

Lake Committee

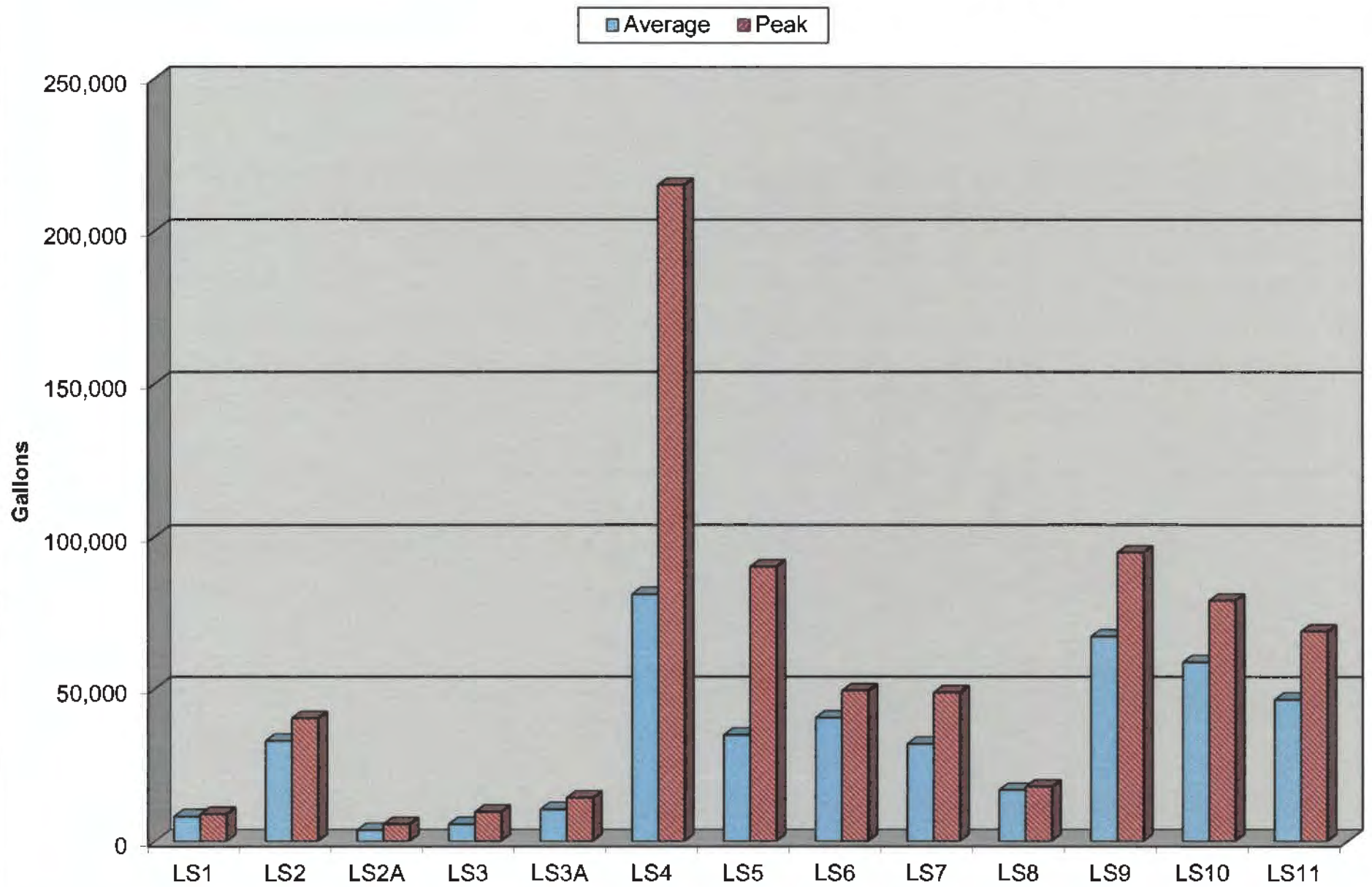
The next meeting of the Lake Committee is scheduled for 7:00 P.M. on Wednesday, August 6, 2025 at the Town Hall.

Attachments

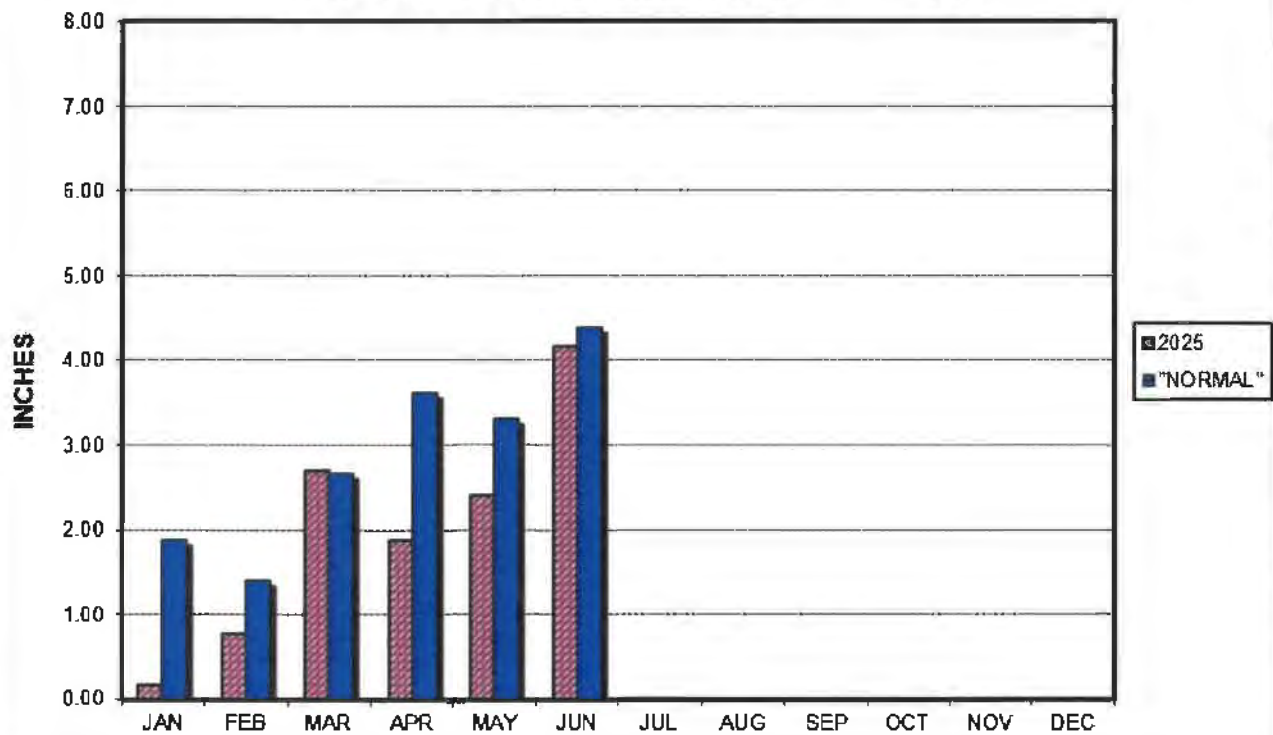
Wastewater Flow/Precipitation - June, 2025



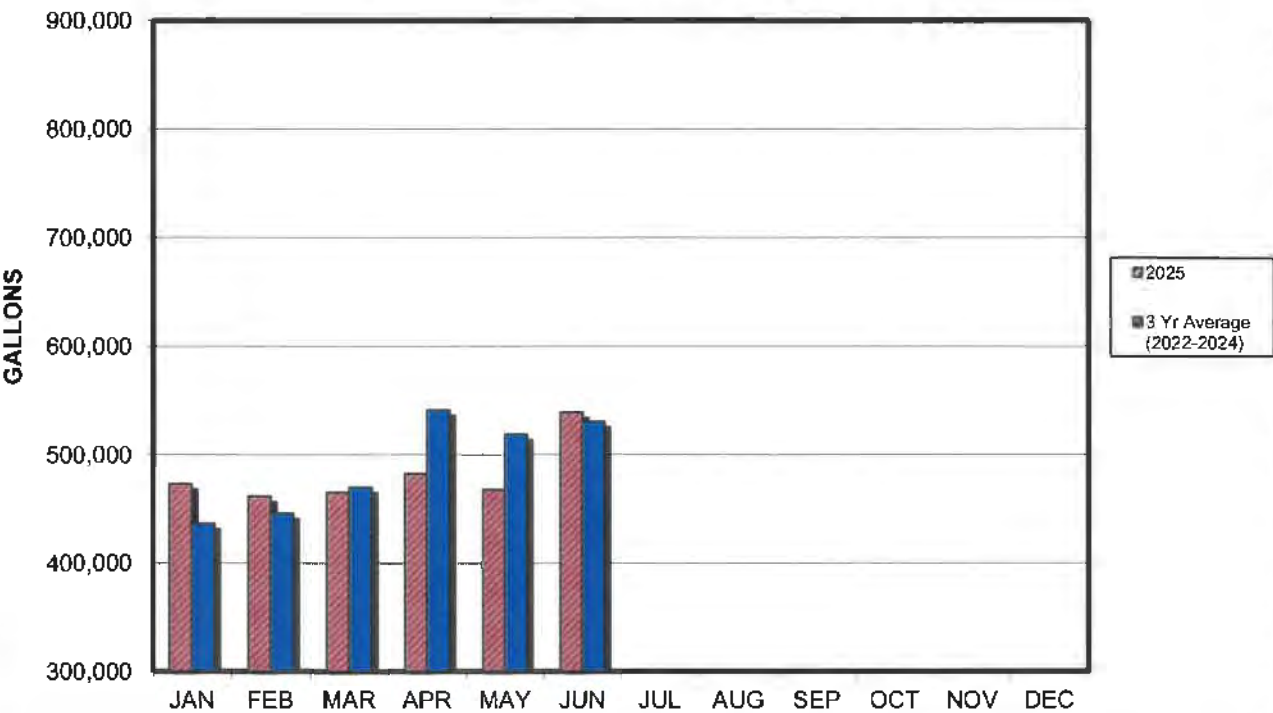
Average Daily Flow/Peak Flow by Area - June, 2025



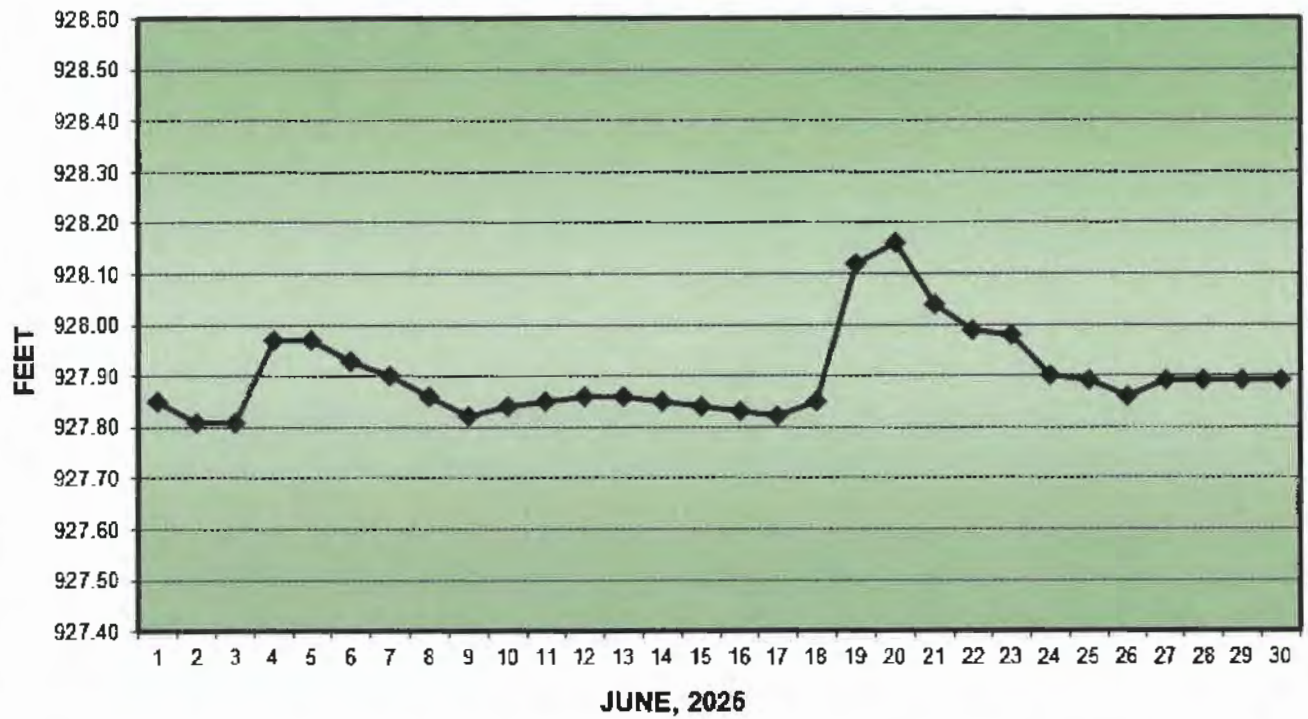
PRECIPITATION - DELAVAN LAKE, WI



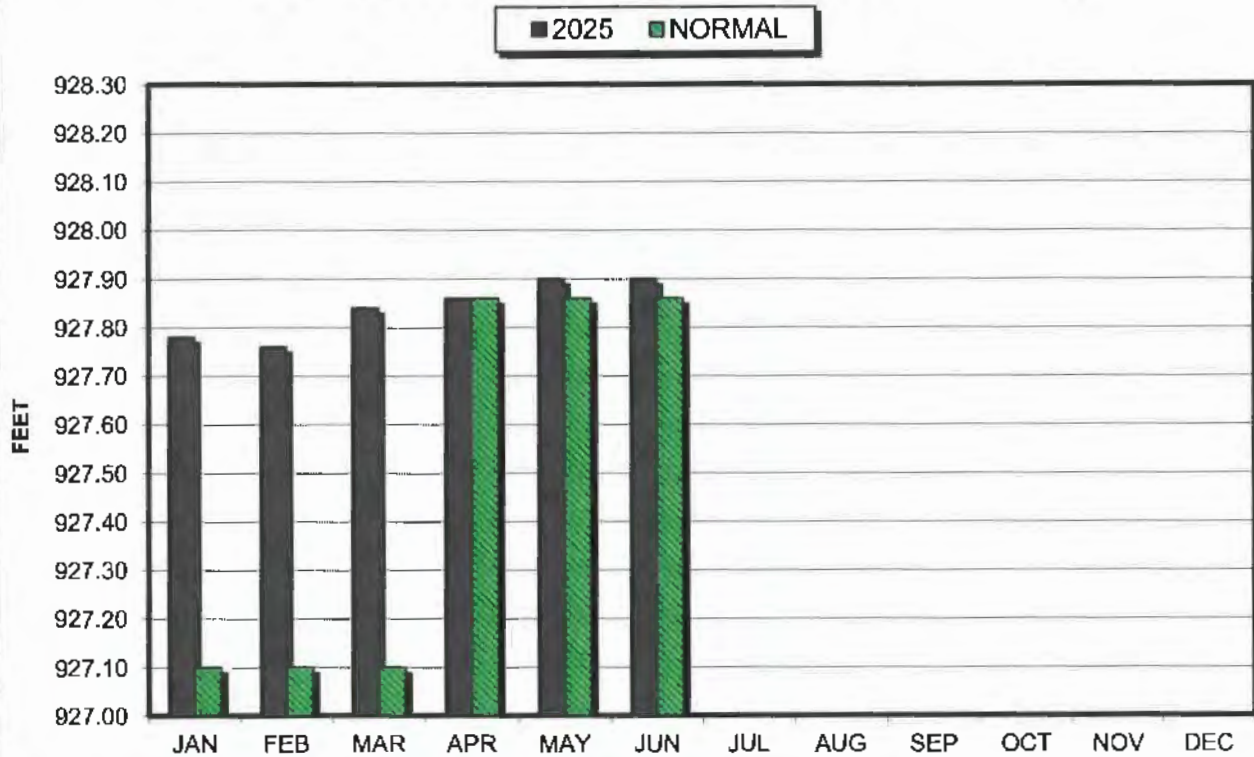
AVERAGE WASTEWATER FLOWS



LAKE ELEVATION - DELAVAN LAKE, WI



AVERAGE LAKE ELEVATION - DELAVAN LAKE, WI



DATA SUMMARY

DEHAVAN LAKE, WISCONSIN

[illegible]