

MEMO

TO: Town of Delavan Lake Committee
FROM: Delavan Lake Sanitary District
RE: DLSD Lake Management Activities for December
DATE: January 2, 2024

LAKE MONITORING RECORDS

December Precipitation – 2.13 inches
Number of Run-off events – 0
Precipitation Year-to-date – 30.72 inches
Ice On Date – December 19, 2022
Ice Off Date – March 10, 2023

December Secchi Disc Readings: Maximum – 30.0 feet

LAKE LEVEL

DNR Summer Lake Elevation Expectations – 927.86 feet
Average Lake Elevation – 927.75 feet

LAKE MANAGEMENT PROGRAM

Lift Station #2A WE Energies upgrades are in progress for future station rebuild.

Lift Station #8 wet well rebuild is complete.

Harvester equipment maintenance continues.

Preliminary work is being done on the upcoming spray permit.

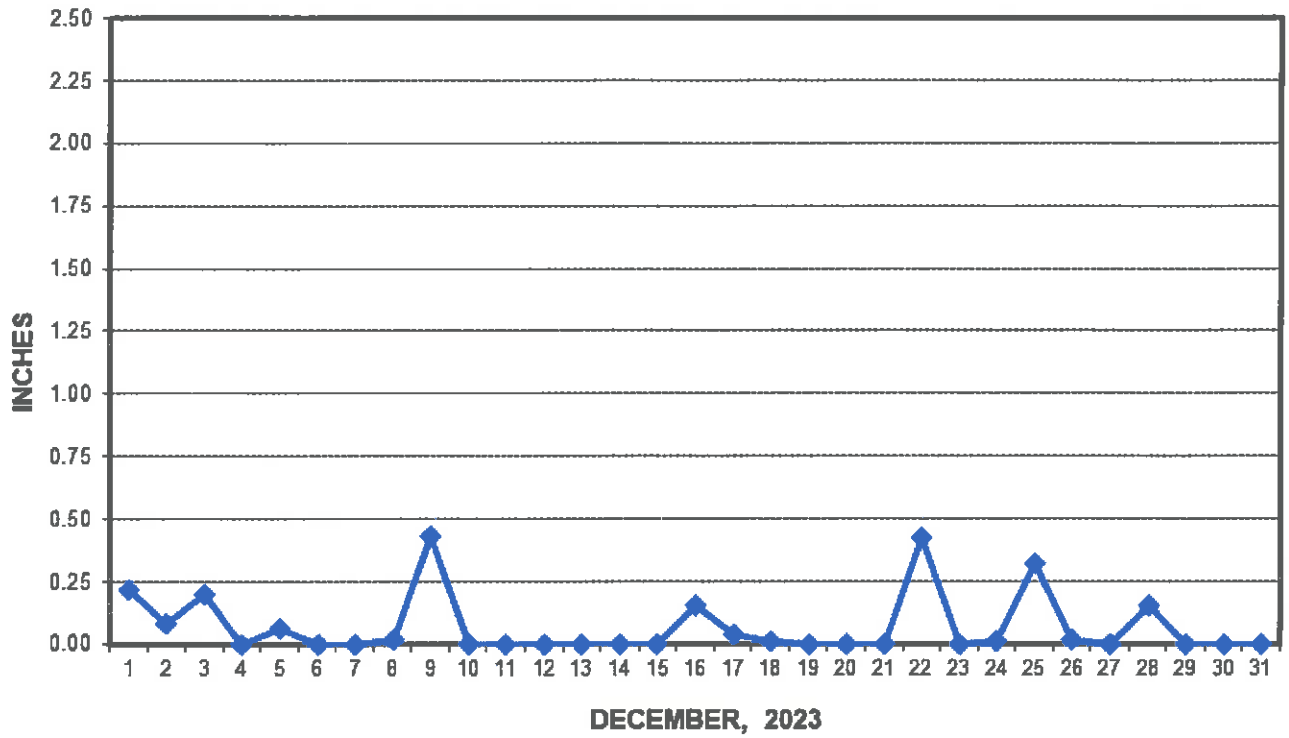
We are making modifications to the transport barge to increase stability for safety. Aquarius plans to have it completed and ready for the 2024 season.

Plans have started for our intercept survey with Onterra to be conducted in July of this year for the upcoming 2025 harvesting permit.

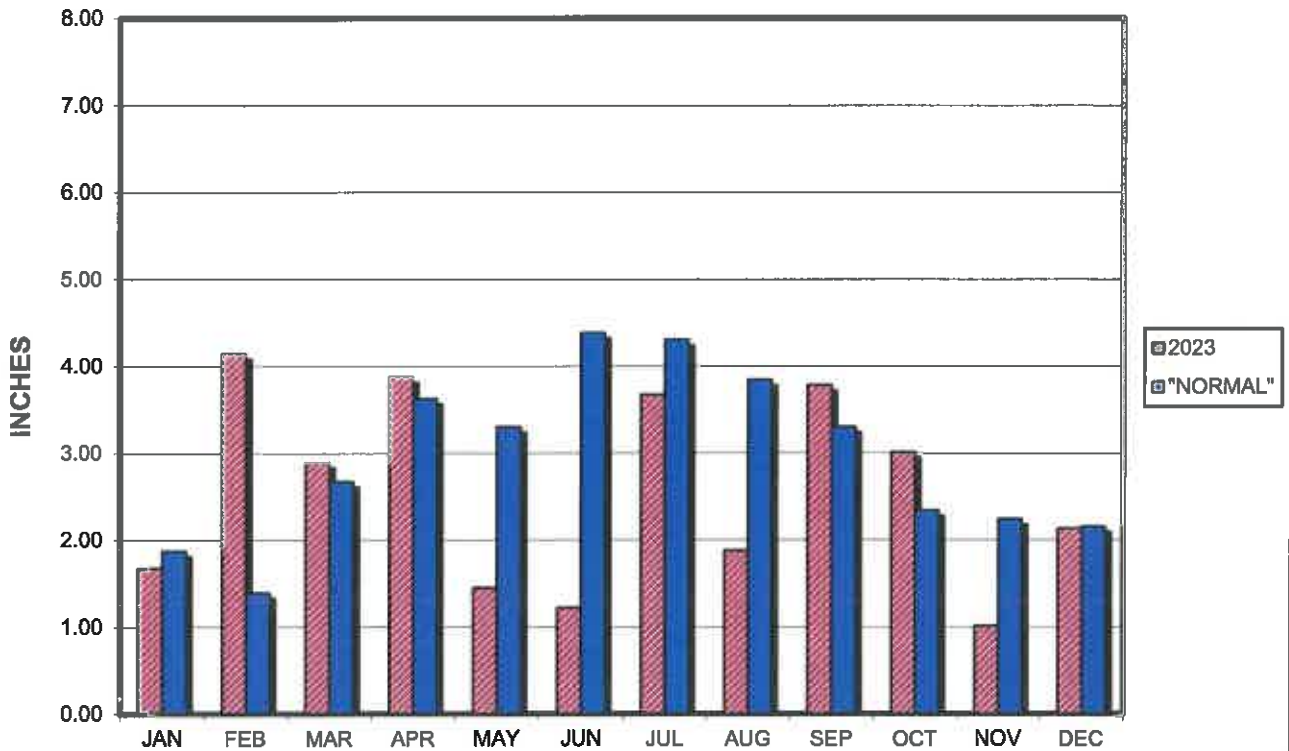
USGS contract is currently under discussion.

Encl.: (3)

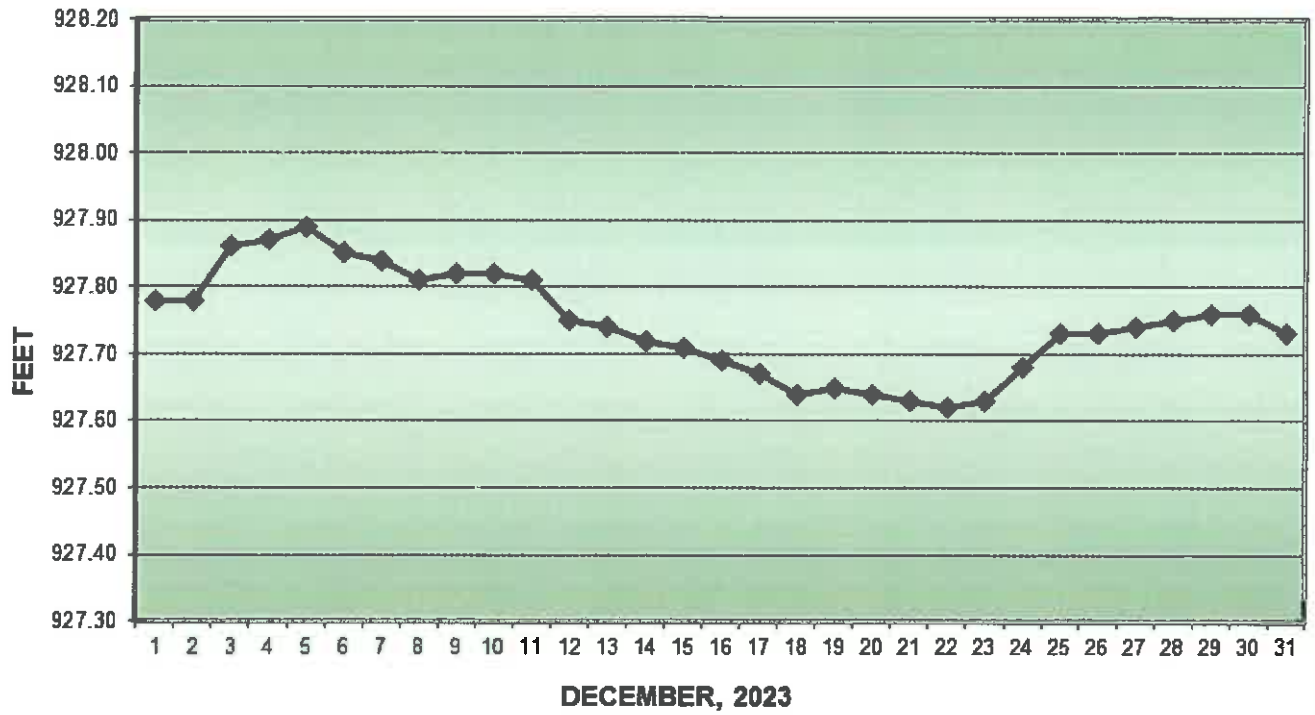
PRECIPITATION - DELAVAN LAKE, WI



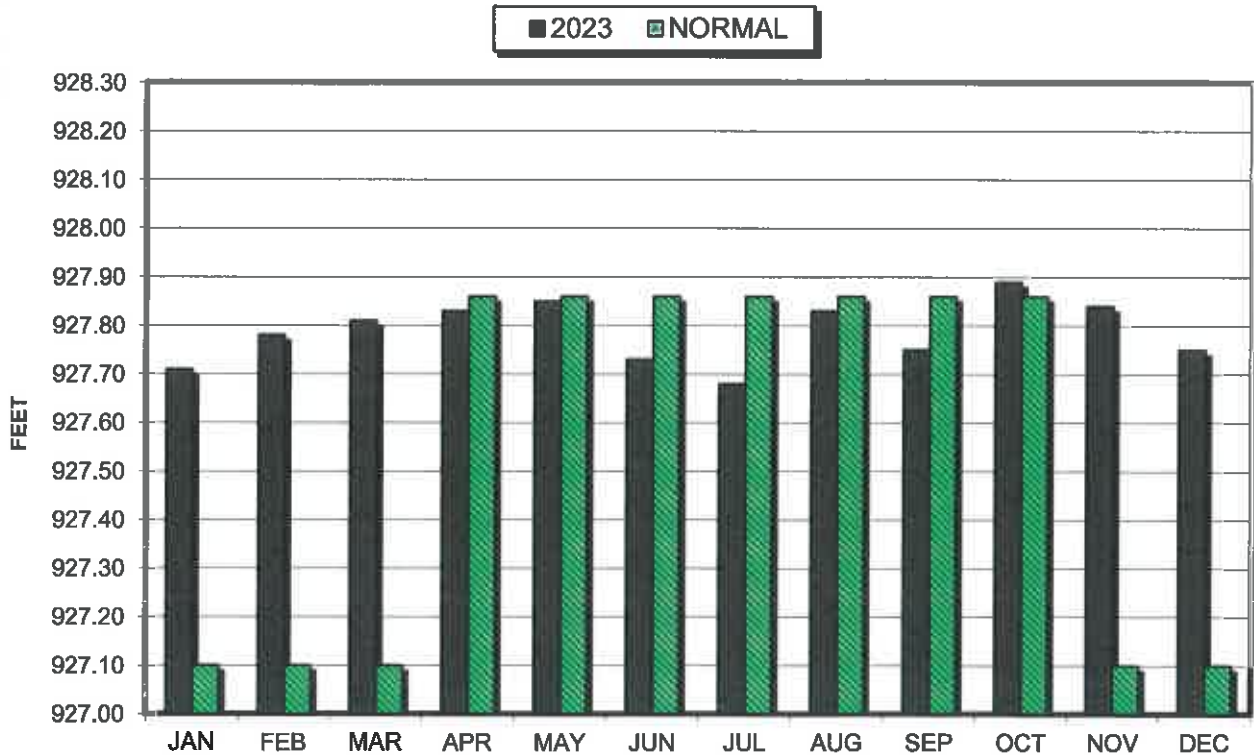
PRECIPITATION - DELAVAN LAKE, WI



LAKE ELEVATION - DELAVAN LAKE, WI



AVERAGE LAKE ELEVATION - DELAVAN LAKE, WI



**DATA SUMMARY
DELAVAN LAKE, WISCONSIN**

Month	Ice On Date	Ice Off Date	Air Temperature		Precipitation		Lake Water Temp.	Average Lake Elevation	Secchi Disc		Cubic Yards Harvested	
			Max.	Min.	Month (In Inches)	Yr to Date (In Inches)			Average (In Feet)	Maximum (In Feet)	Month	YTD
2021												
JAN	1/21/21		38	-6	1.39	1.39	-	927.58	-	-	-	-
FEB			47	-15	1.45	2.84	-	927.50	-	-	-	-
MAR		3/18/21	65	9	1.54	4.38	-	927.67	-	-	-	-
APR			84	21	0.76	5.14	46	927.75	8.7	9	-	-
MAY			88	30	1.52	6.66	67	927.87	18.3	32.0	547	547
JUN			95	46	2.58	9.24	76	927.84	10.1	19.5	2495	3042
JUL			92	52	2.87	12.11	78	927.89	10.2	14.0	1800	4842
AUG			93	51	3.96	16.07	77	927.78	9.0	12.0	1910	6752
SEP			89	45	1.33	17.40	66	927.53	7.8	11.0	595	7347
OCT			87	29	4.78	22.18	67	927.55	9.3	11.0	59	7406
NOV			66	15	0.46	22.64	51	927.57	9.7	13	-	-
DEC			64	7	1.81	24.45	-	927.61	-	-	-	-
2022												
JAN	1/10/22		40	-18	0.63	0.63	-	927.72	-	-	-	-
FEB			49	-3	0.77	1.40	-	927.70	-	-	-	-
MAR		3/23/22	73	6	2.91	4.31	-	927.80	-	-	-	-
APR			81	24	5.05	9.36	42	927.88	20.0	20.0	387	387
MAY			91	33	2.42	11.78	62	927.90	12.7	20.0	2184	2571
JUN			98	47	2.21	13.99	74	927.87	9.7	13.0	1431	4002
JUL			90	52	2.98	16.97	79	927.68	8.7	10.0	1585	5587
AUG			92	52	4.28	21.25	79	927.60	6.6	9.0	305	5892
SEP			85	35	7.51	28.76	59	927.85	6.7	7.0	-	-
OCT			78	29	1.67	30.43	-	927.79	-	-	39	5931
NOV			75	9	1.23	31.66	51	927.77	12.3	15.0	-	-
DEC	12/19/22		56	-13	1.67	33.33	-	927.72	-	-	-	-
2023												
JAN			49	-14	1.67	1.67	-	927.71	-	-	-	-
FEB			51	-7	4.14	5.81	-	927.78	-	-	-	-
MAR		3/10/23	69	9	2.89	8.70	-	927.81	-	-	-	-
APR			82	26	3.87	12.57	49	927.83	8.0	9.0	-	-
MAY			91	35	1.45	14.02	62	927.85	21.8	38.0	855	855
JUN			92	43	1.22	15.24	70	927.73	9.6	17.0	1553	2408
JUL			92	53	3.67	18.91	75	927.68	6.0	8.0	1558	3966
AUG			97	44	1.88	20.79	76	927.83	7.3	10.0	1620	5586
SEP			93	42	3.78	24.57	68	927.75	8.7	12.0	854	6440
OCT			86	24	3.01	27.58	-	927.89	-	-	146	6586
NOV			68	10	1.01	28.59	-	927.84	-	-	-	-
DEC			56	13	2.13	30.72	-	927.75	-	30.0	-	-