

**DELAVAN LAKE SANITARY DISTRICT
ADMINISTRATOR'S REPORT
NOVEMBER ACTIVITY 2019**

ADMINISTRATION

2020 Budget meetings are complete. Summary was posted in the paper and public hearings held to pass the 2020 Budget.

Lift Station #10 lost a meter reader and some controls, likely from voltage spike or lightening.

Lift Station Wet Well Cleanings were completed.

2001 Jeep and 1996 Truck were sold to allow for a replacement 4X4 to support future healthy lake projects, weed harvesting and sewer crew operations.

Force main work began

Lift station #6 rehab work has begun

Winterizing boats and repairs have begun

Meetings with City of Delavan, Lake Lawn Lodge, and a developer is in progress for possible site development and lift station changes at Lift Station #11 and possible changes to Highway 50.

Vehicles used on roadways are being evaluated for compliance with Wisconsin Statute 347 for proper amber warning lights. Correction will be made accordingly.

Continued efforts to evaluate possible healthy lake projects in Jackson Creek and inlet are being carefully evaluated and worked on.

Lake will be drawn down about 4 to 6 inches to its winter elevations

SEWER SYSTEM OPERATIONS

Building Sewer Connections

New Connections for the Month - 2
Reconnections for the Month – 0
Disconnections for the Month – 3
Total Number of Structures Connected to Date – 3,101
Total ERU Count for the Month – 4,011

Operation and Maintenance

Average November Daily Wastewater Flow to WalCoMet – 727,995 gallons
Peak November Flow – 878,644 gallons
Diggers Requests Marked for the Month – 95
Emergency Call Outs – 6

The following charts are attached: *Wastewater Flow comparison with Precipitation for November, 2019*
Average Daily Wastewater Flow comparison with Peak Flow
Precipitation comparison with “normal”
Wastewater Flow comparison with “normal”
Environmental Data Summary
Daily Lake Elevation for November, 2019
Lake Elevation comparison with “normal”

Lake Monitoring/Lake Level

Precipitation Total for the Month – 1.62 inches
Below Normal – 0.62 inches
Ice On Date – January 11, 2019
Ice Off Date – March 27, 2019
Secchi Disc Reading Main Lake – 5.5 feet on 9/30/2019

See attached Lake Elevation Graph and Chart.

Lake Information

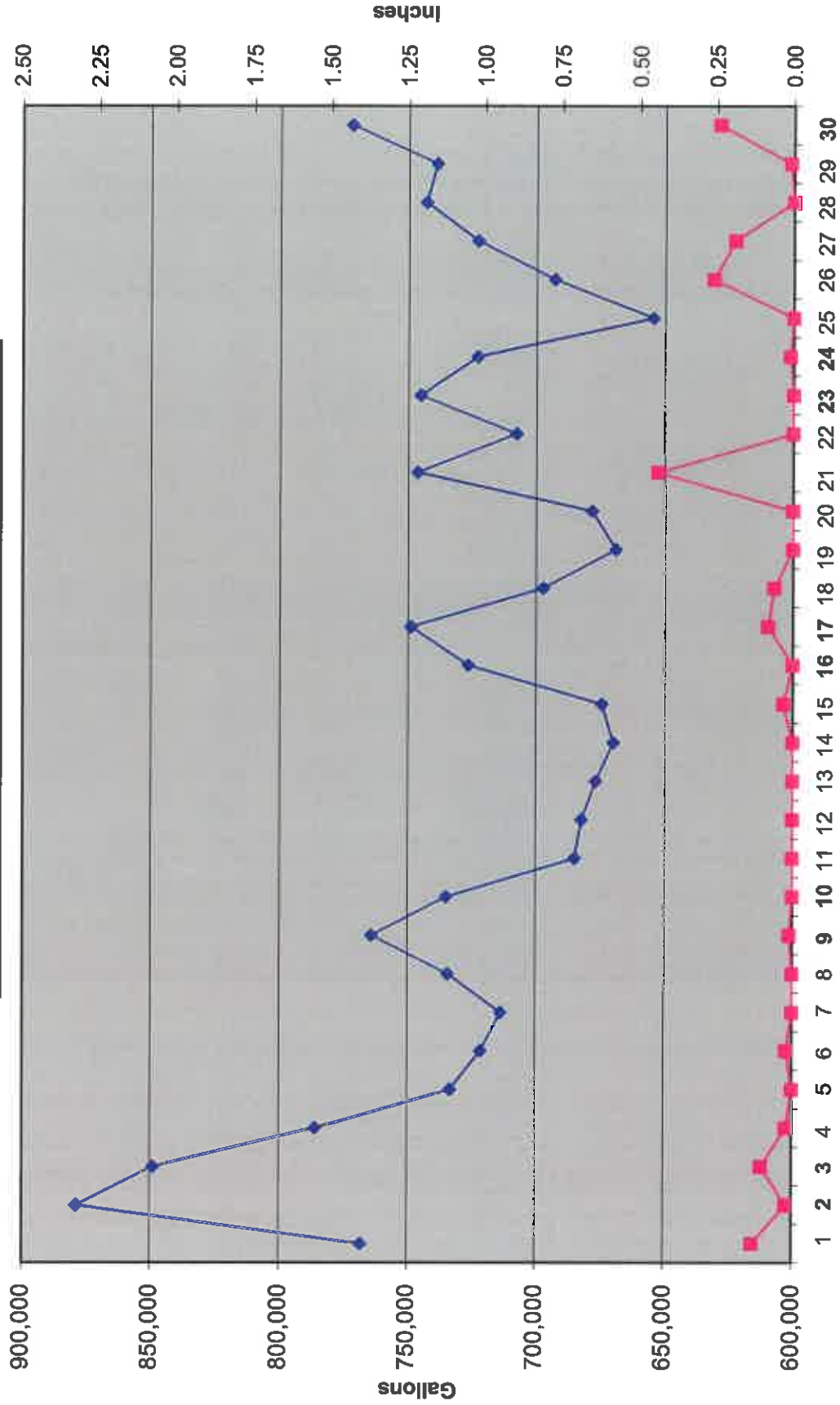
DNR Lake Level Goal – 927.86 feet
Average Lake Elevation – 927.61 feet
Number of Dam Inspections – 30

Lake Committee

The next meeting of the Lake Committee is scheduled for 7:00 P.M. on Wednesday, January 8, 2020 at the Town Hall.

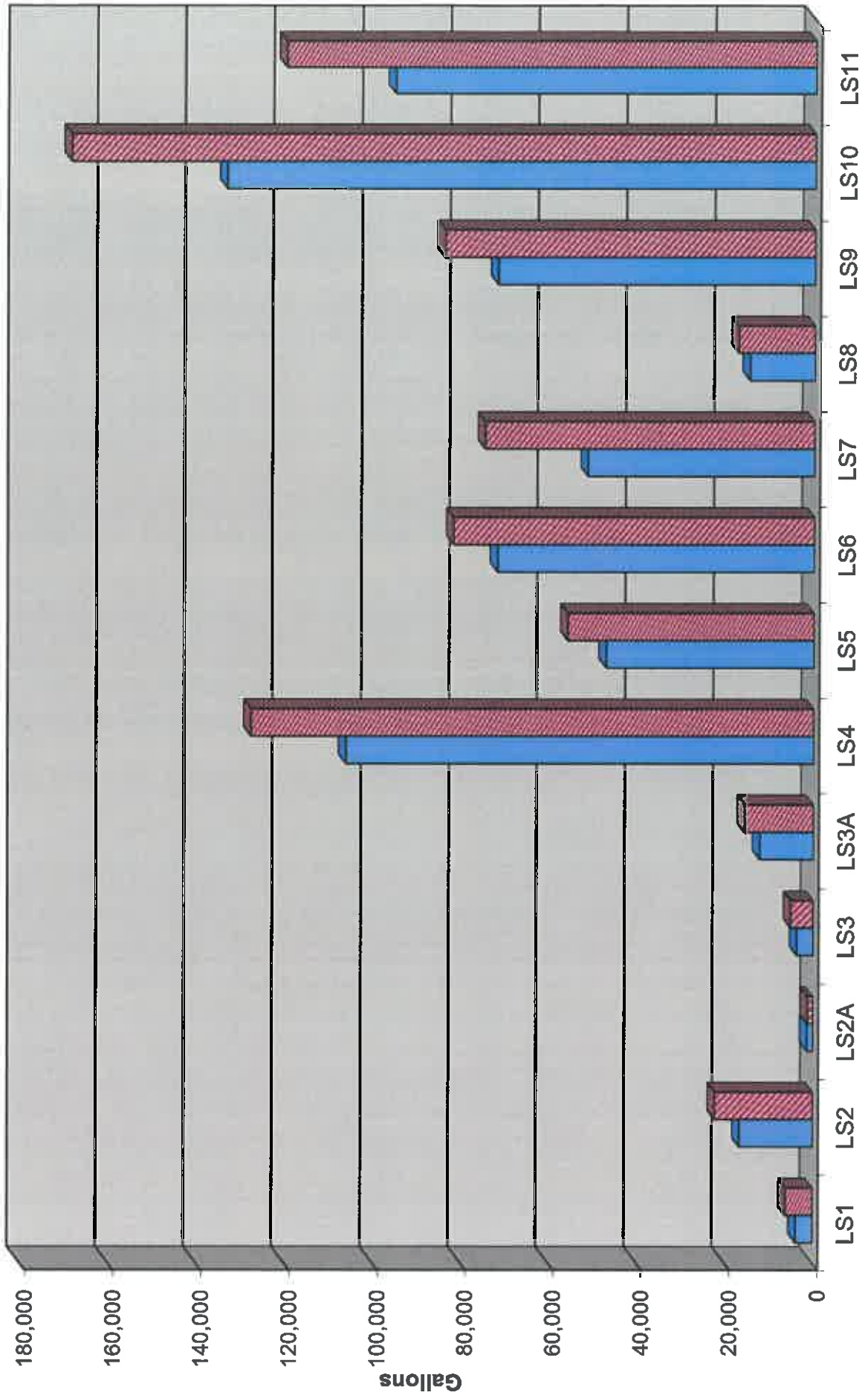
Attachments

Wastewater Flow/Precipitation - November, 2019

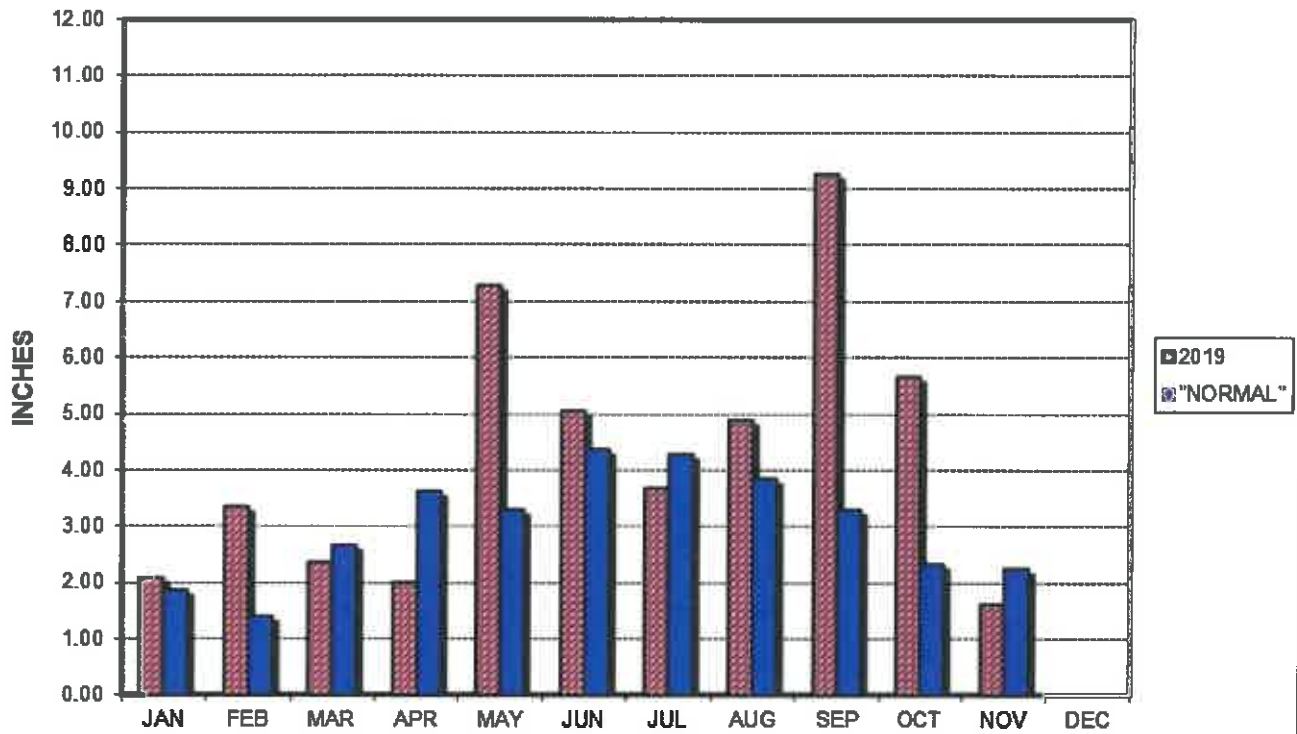


Average Daily Flow/Peak Flow by Area - November, 2019

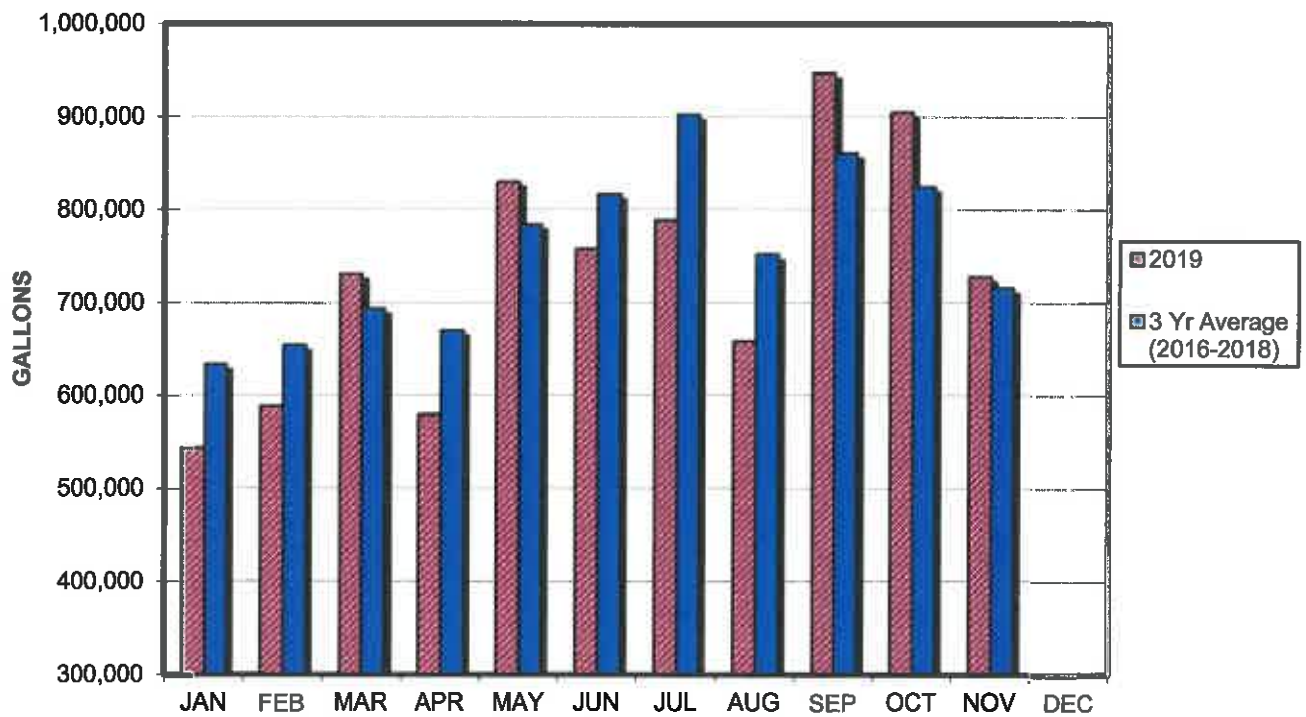
Average Peak



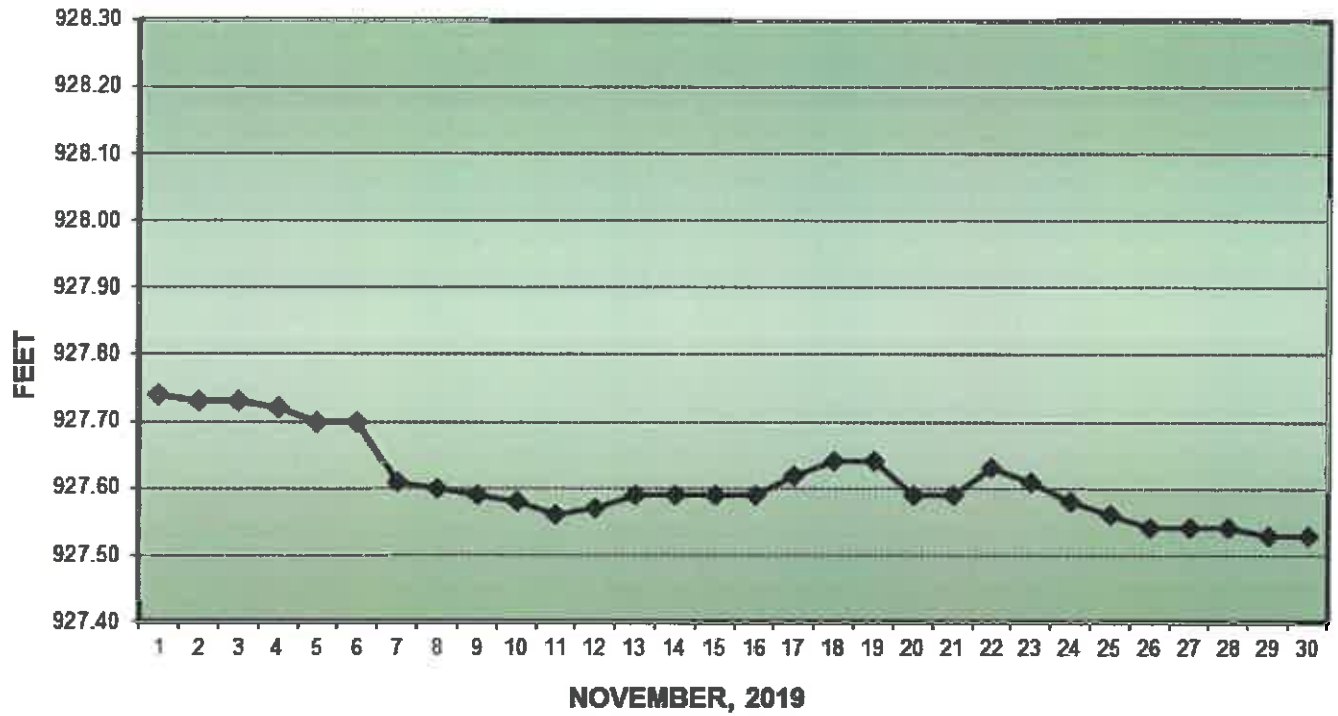
PRECIPITATION - DELAVAN LAKE, WI



AVERAGE WASTEWATER FLOWS



LAKE ELEVATION - DELAVAN LAKE, WI



AVERAGE LAKE ELEVATION - DELAVAN LAKE, WI

