

**DEHAVAN LAKE SANITARY DISTRICT
ADMINISTRATOR'S REPORT
SEPTEMBER ACTIVITY 2017**

ADMINISTRATION

Lake elevation will begin to be lowered in late October. Currently averaging around 927.74

Administration building parking lot is in progress with porous pavers.

Lift Station #9 driveway grade was also corrected along with adding additional area at the Town's request for staging Fire & Rescue near their pier.

Lift Station #2 is anticipated to begin a rehab project of the controls, electrical system and pumps. Work should begin mid to late September to give Yacht club time to wrap up events.

Harvester operations coming to close as we get ready to do our winter tear down and maintenance on the units.

Pellets and Floc Logs are still in the process of study. Dave and Charlie are heading up the program and reviewing results.

Waterways technically approved the Harvester Purchase and DLSD is waiting for a final confirmation that funds have been put in there for our next purchase of a harvester.

Charlie will be attending Advance Lake Leaders in October.

Treatment for pennywort was done on September 28, 2017. This invasive species has been found in several locations around the lake.

Through September 27th the harvesters have removed approximately 3,446 cubic yards of plant material in 2017.

DLSD Budget will be placed in the paper for publication in October.

SEWER SYSTEM OPERATIONS

Building Sewer Connections

New Connections for the Month - 0

Reconnections for the Month - 0

Disconnections for the Month - 0

Total Number of Structures Connected to Date - 3,097

Total ERU Count for the Month - 4,008

Operation and Maintenance

Average September Daily Wastewater Flow to WalCoMet – 518,687 gallons

Peak September Flow – 725,644 gallons

Diggers Requests Marked for the Month – 92

Emergency Call Outs – 1

The following charts are attached: *Wastewater Flow comparison with Precipitation for September, 2017*
Average Daily Wastewater Flow comparison with Peak Flow
Precipitation comparison with “normal”
Wastewater Flow comparison with “normal”
Environmental Data Summary
Daily Lake Elevation for September, 2017
Lake Elevation comparison with “normal”

Lake Monitoring/Lake Level

Precipitation Total for the Month – .27 inches

Below Normal – 3.03 inches

Ice Off Date – February 24, 2017

Secchi Disc Reading Main Lake – 7 feet on 9/26/17

See attached Lake Elevation Graph and Chart.

Lake Information

DNR Lake Level Goal – 927.86 feet

Average Lake Elevation – 927.77 feet

Number of Dam Inspections – 30

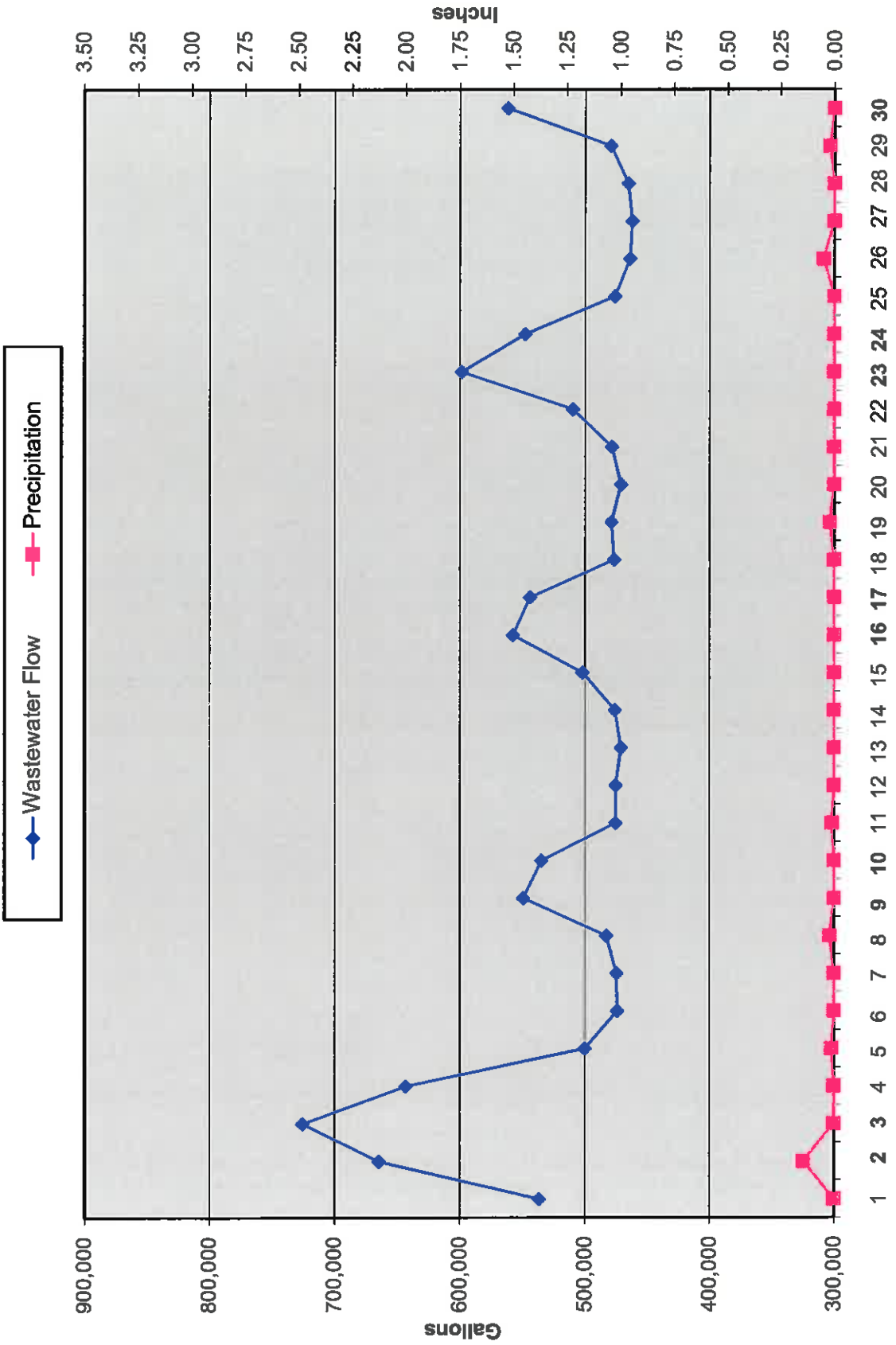
See attached Gate Setting Chart.

Lake Committee

The next meeting of the Lake Committee is scheduled for 7:00 P.M. on Wednesday, November 1st, 2017 at the Town Hall.

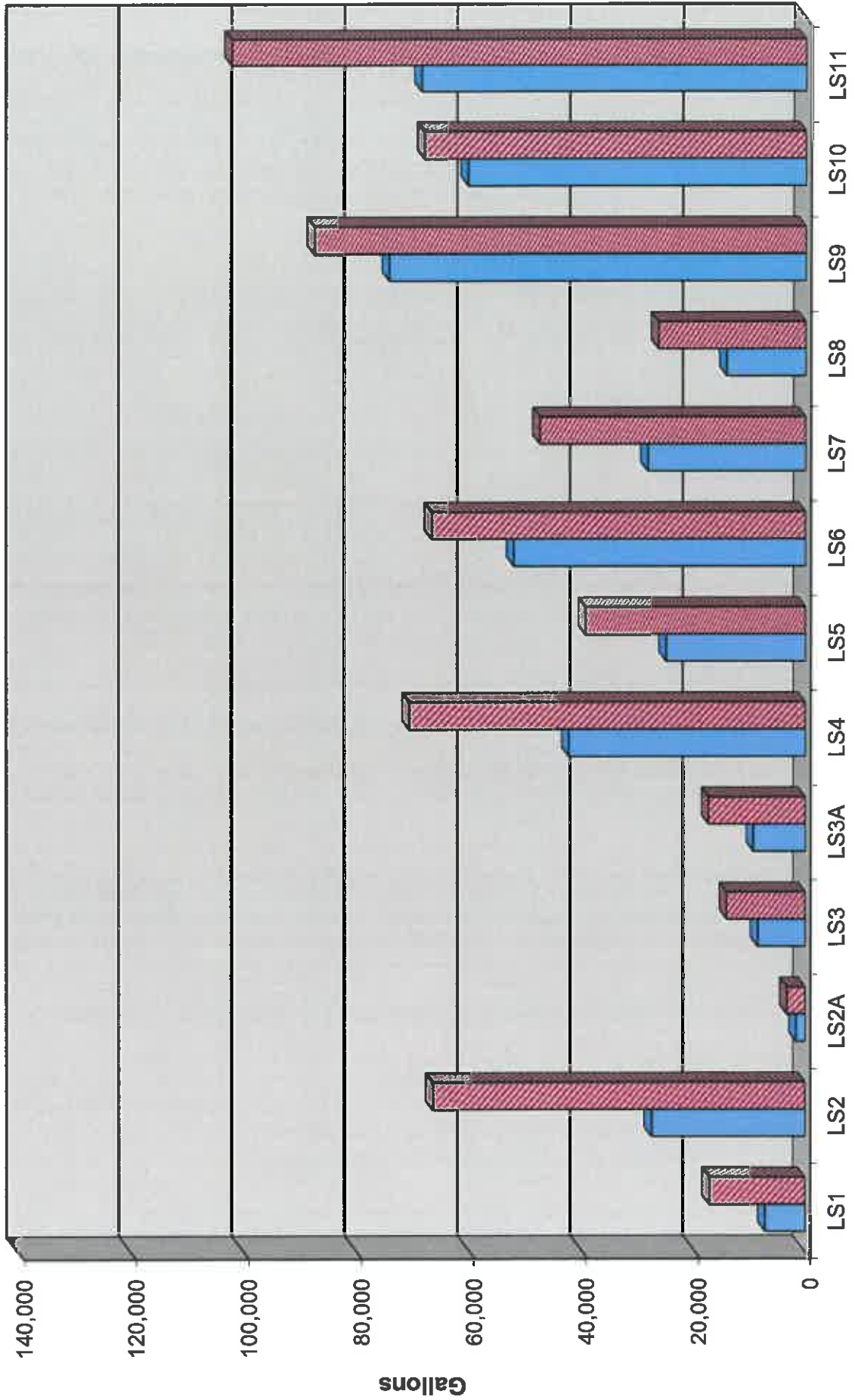
Attachments

Wastewater Flow/Precipitation - September, 2017

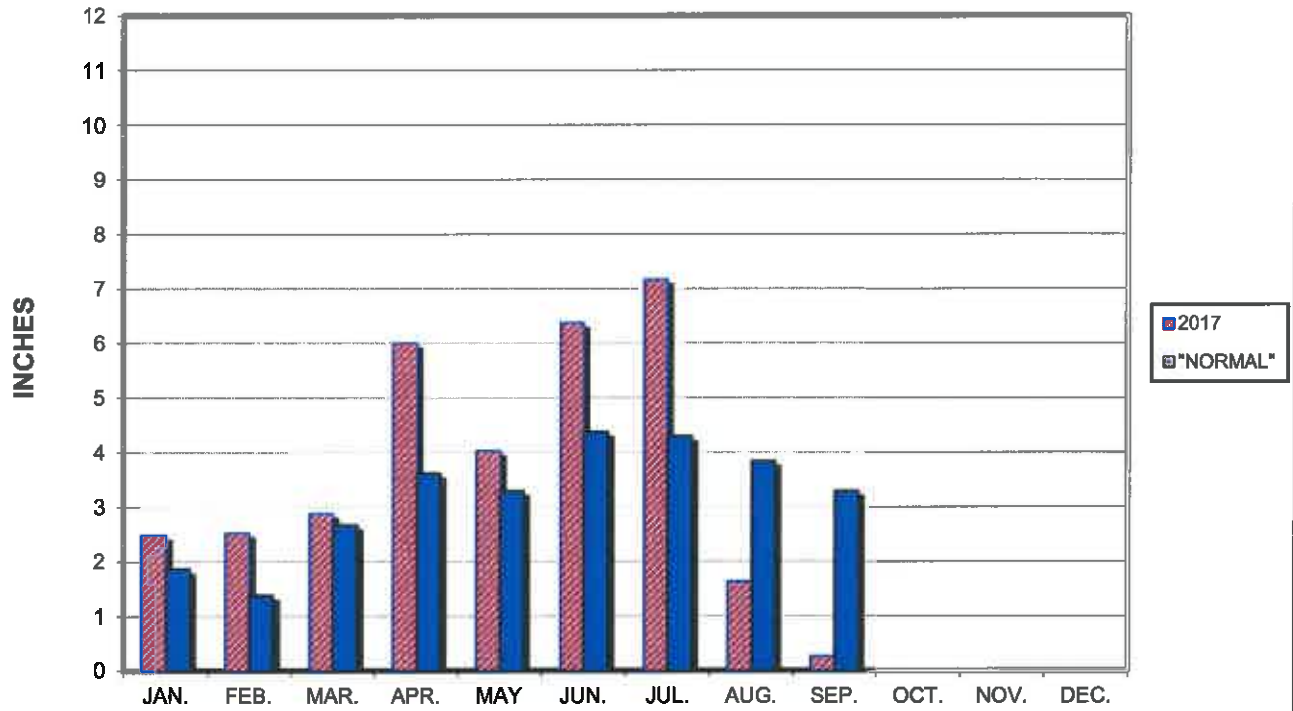


Average Daily Flow/Peak Flow by Area-September, 2017

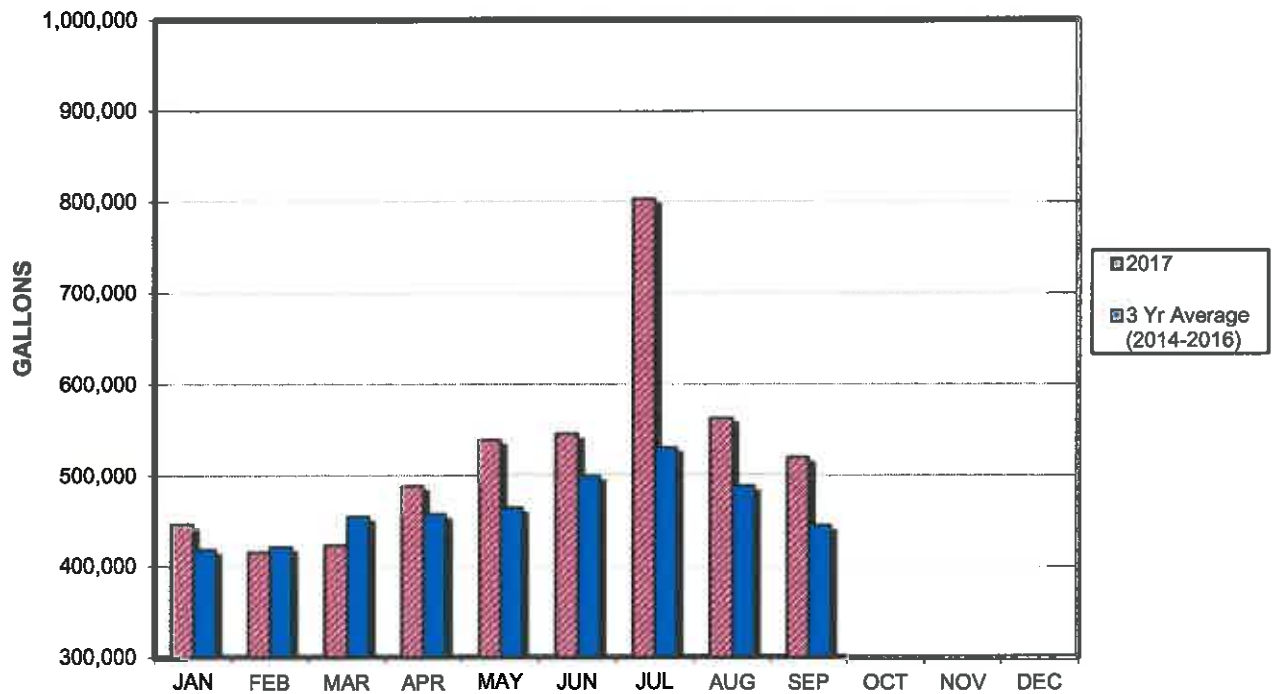
Average Peak



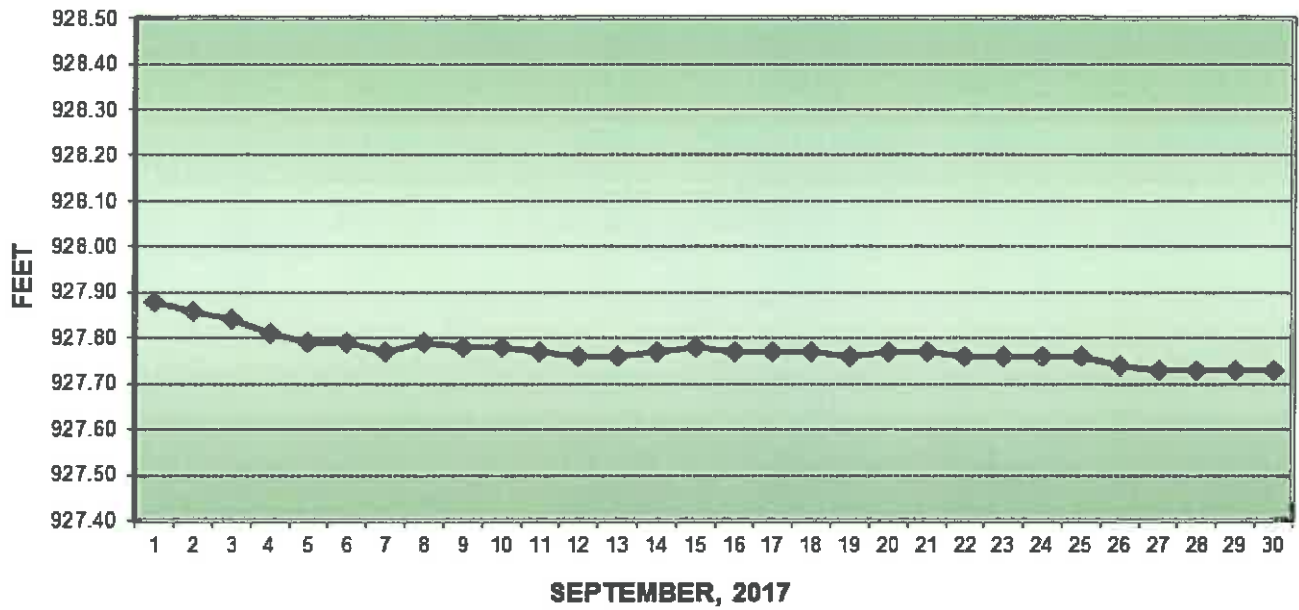
PRECIPITATION - DELAVAN LAKE, WI



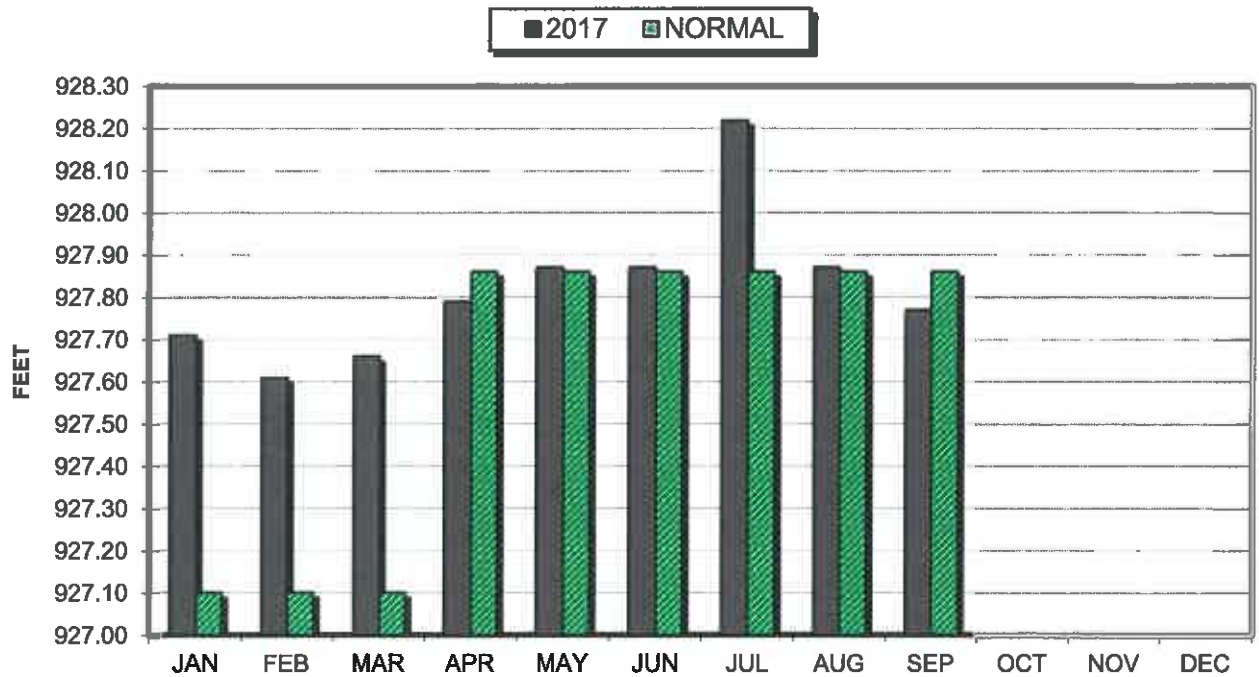
AVERAGE WASTEWATER FLOWS



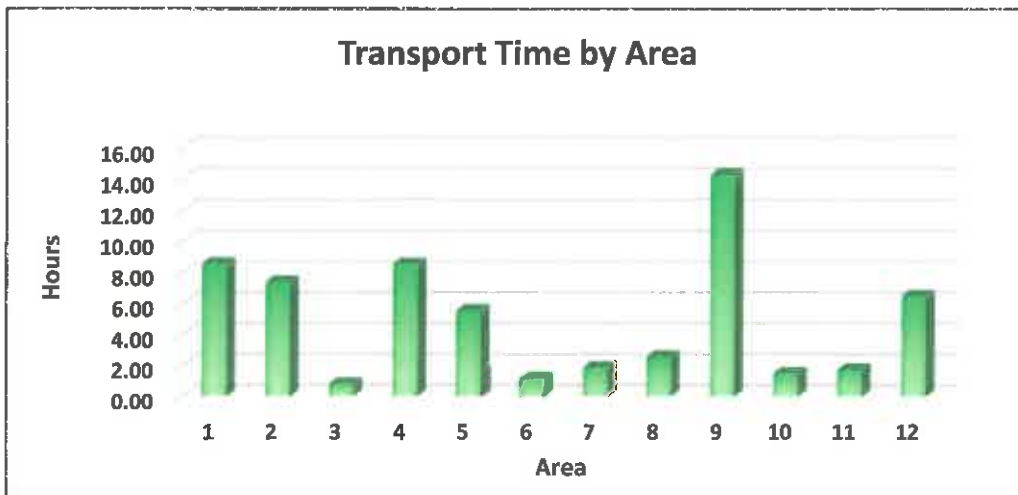
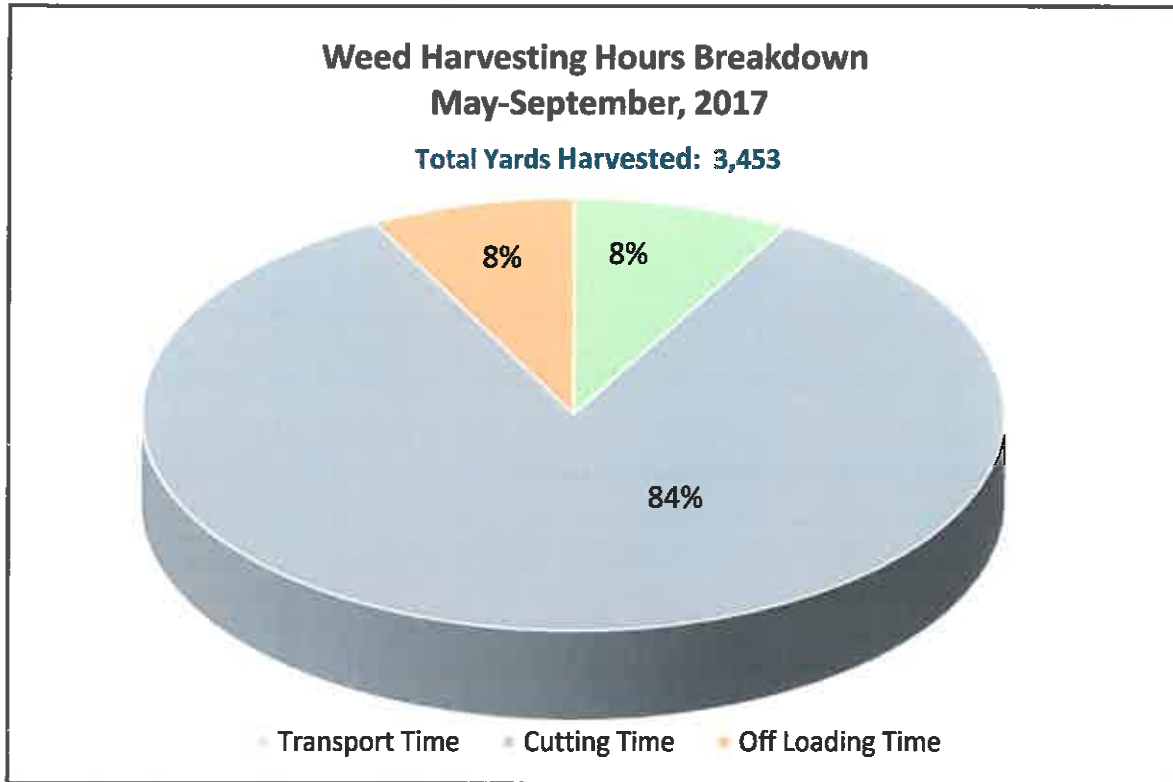
LAKE ELEVATION - DELAVAN LAKE, WI



AVERAGE LAKE ELEVATION - DELAVAN LAKE, WI



2017 Weed Harvesting Summary



Month	Yards	(Hundredths of Hour)		
		Cut Times	Transport Times	Off Load Times
May	296	75.85	9.09	0.33
Jun	1,047	200.50	24.87	18.97
July	840	153.69	13.42	13.14
Aug	1,157	181.10	12.40	21.80
Sep	113	14.09	1.00	2.84
Total	3,453	625.23	60.78	57.08