

**DELVAN LAKE SANITARY DISTRICT  
ADMINISTRATOR'S REPORT  
AUGUST ACTIVITY 2020**

**ADMINISTRATION**

LS#4 damaged generator was removed.

Design is started for converting LS#3A to a submersible station, LS#3 underground conduit run is being looked into before the association replaces their road as that station is set for a rebuild in the future as well, LS#4 Control Panel future project is in review.

County is denying permit to put in riggers gravel pad next to Lift Station #4 to crane out old failed generator and install new generator during our emergency repair. Work will be done regardless as this is urgent.

DLSD Office phone system is again facing complications. AT&T Fiber optic run is anticipated to correct this defect however they are running into issues that may prevent this because the actual tap point is over 1.4 miles away. Same issue is with Spectrum Cable or Fiber. DLSD may need to get phones back on copper system. Both phone services were asked to re-evaluate the install and see if there is something the district can do to connect to a more updated system versus the troubling copper.

LS #11 Pump 1 is failing. Check valves and air relief also started to leak, and parts are being ordered to attempt to rebuild those items while staff researches replacing Pump 1. It was hoped to hold off on this for the future development, however this is the original equipment and it is in stress at this time. Further discussion with Lake Lawn took place to find a resolution to the serious infiltration problem the old sewer lines have within their facility.

Dredging program is still in evaluation stages and also waiting for permits from the DNR.

Budget 2021 process planning has begun.

**SEWER SYSTEM OPERATIONS**

**Building Sewer Connections**

**New Connections for the Month - 2**  
**Reconnections for the Month - 1**  
**Disconnections for the Month - 1**  
**Total Number of Structures Connected to Date - 3,111**  
**Total ERU Count for the Month - 4,019**

## **Operation and Maintenance**

**Average August Daily Wastewater Flow to WalCoMet – 711,547 gallons**

**Peak August Flow – 1,095,882 gallons**

**Diggers Requests Marked for the Month – 99**

**Emergency Call Outs – 2**

The following charts are attached: *Wastewater Flow comparison with Precipitation for August, 2020*

*Average Daily Wastewater Flow comparison with Peak Flow*

*Precipitation comparison with “normal”*

*Wastewater Flow comparison with “normal”*

*Environmental Data Summary*

*Daily Lake Elevation for August, 2020*

*Lake Elevation comparison with “normal”*

## **Lake Monitoring/Lake Level**

**Precipitation Total for the Month – 5.38 inches**

**Above Normal – 1.54 inches**

**Ice On Date – January 17, 2020**

**Ice Off Date – March 13, 2020**

**Secchi Disc Reading Main Lake – 9.8 feet on 8/12/2020**

*See attached Lake Elevation Graph and Chart.*

## **Lake Information**

**DNR Lake Level Goal – 927.86 feet**

**Average Lake Elevation – 927.90 feet**

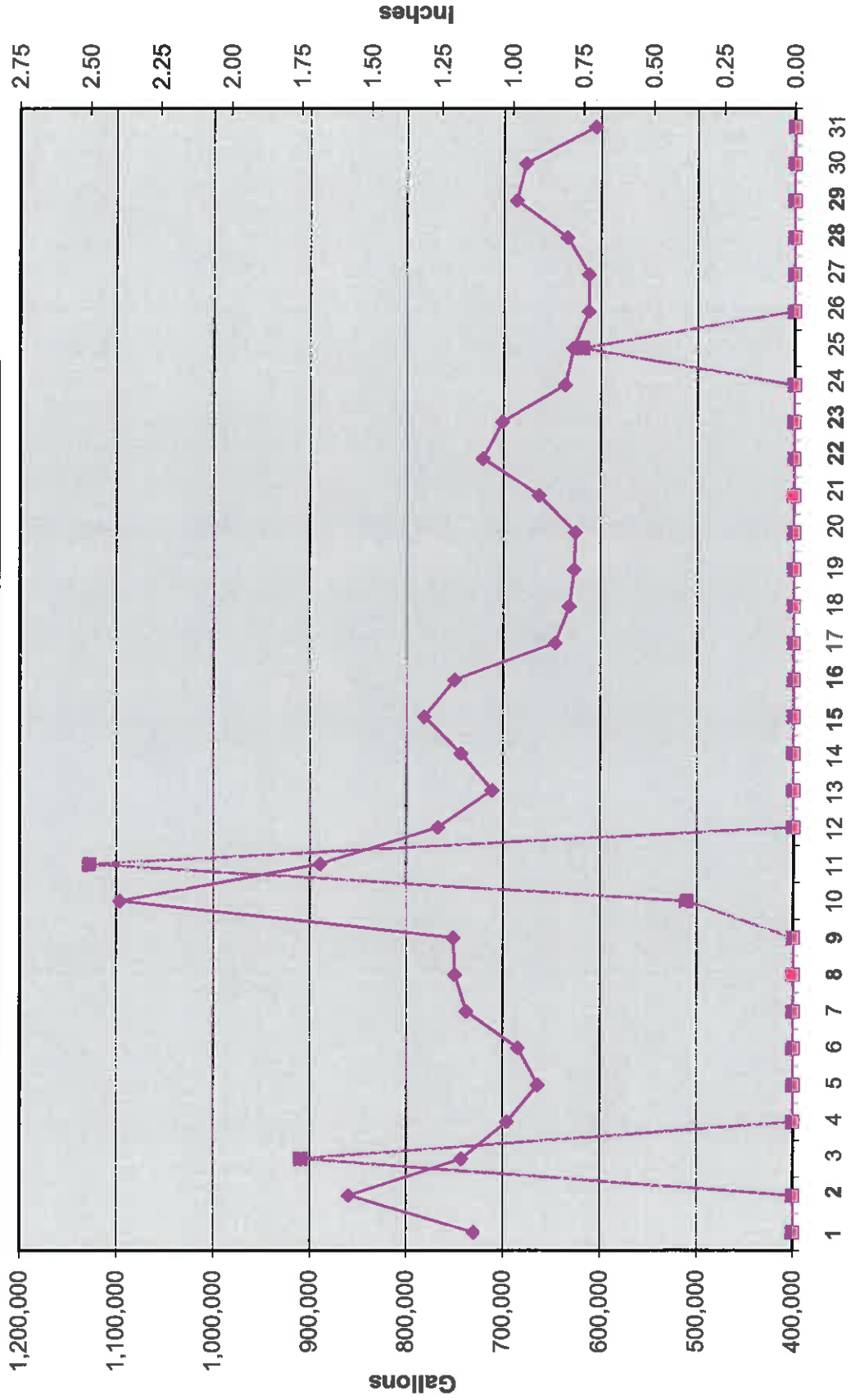
**Number of Dam Inspections – 31**

## **Lake Committee**

The next meeting of the Lake Committee is scheduled for 7:00 P.M. on Wednesday, October 7, 2020 at the Town Hall.

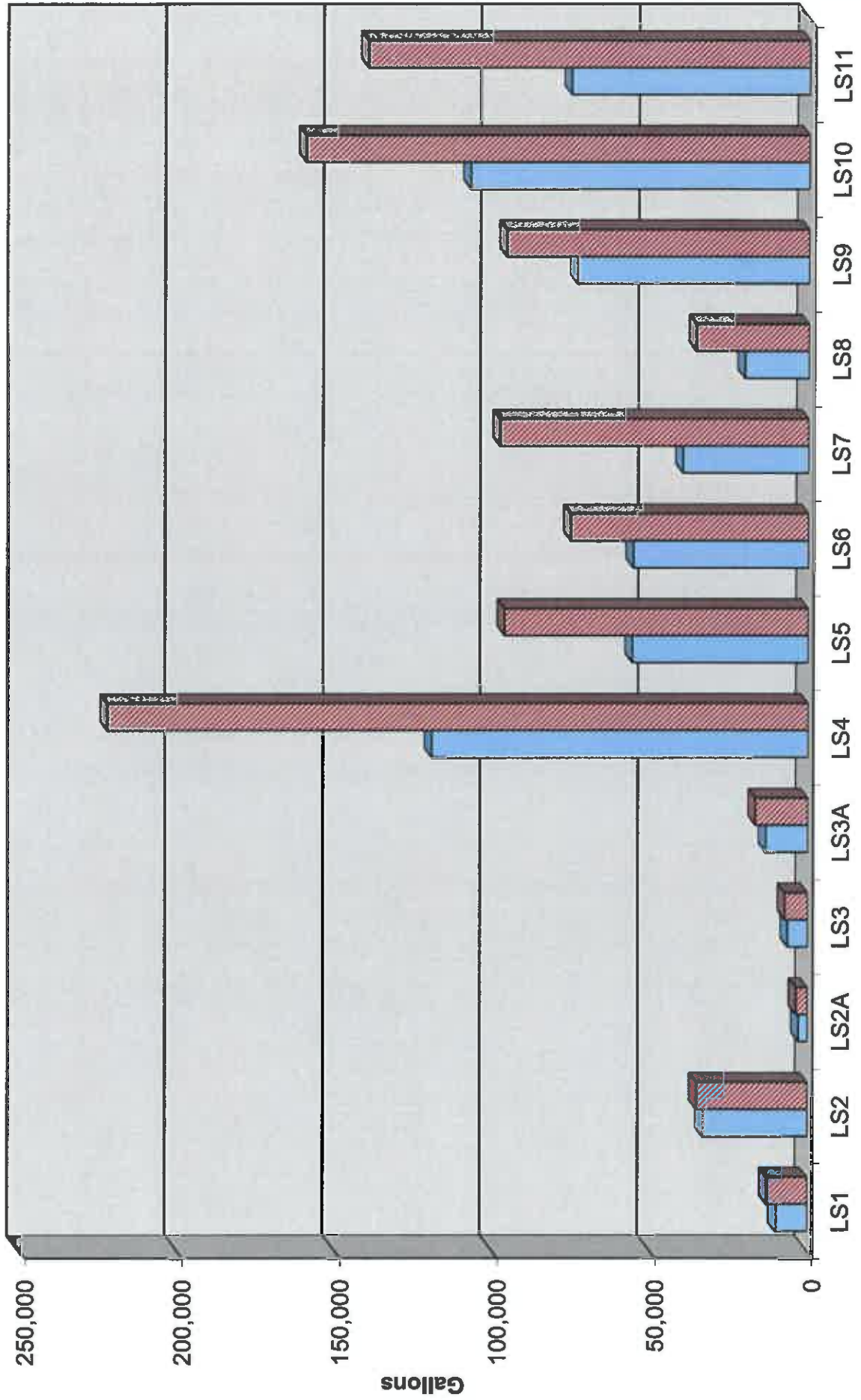
## **Attachments**

Wastewater Flow/Precipitation - August, 2020

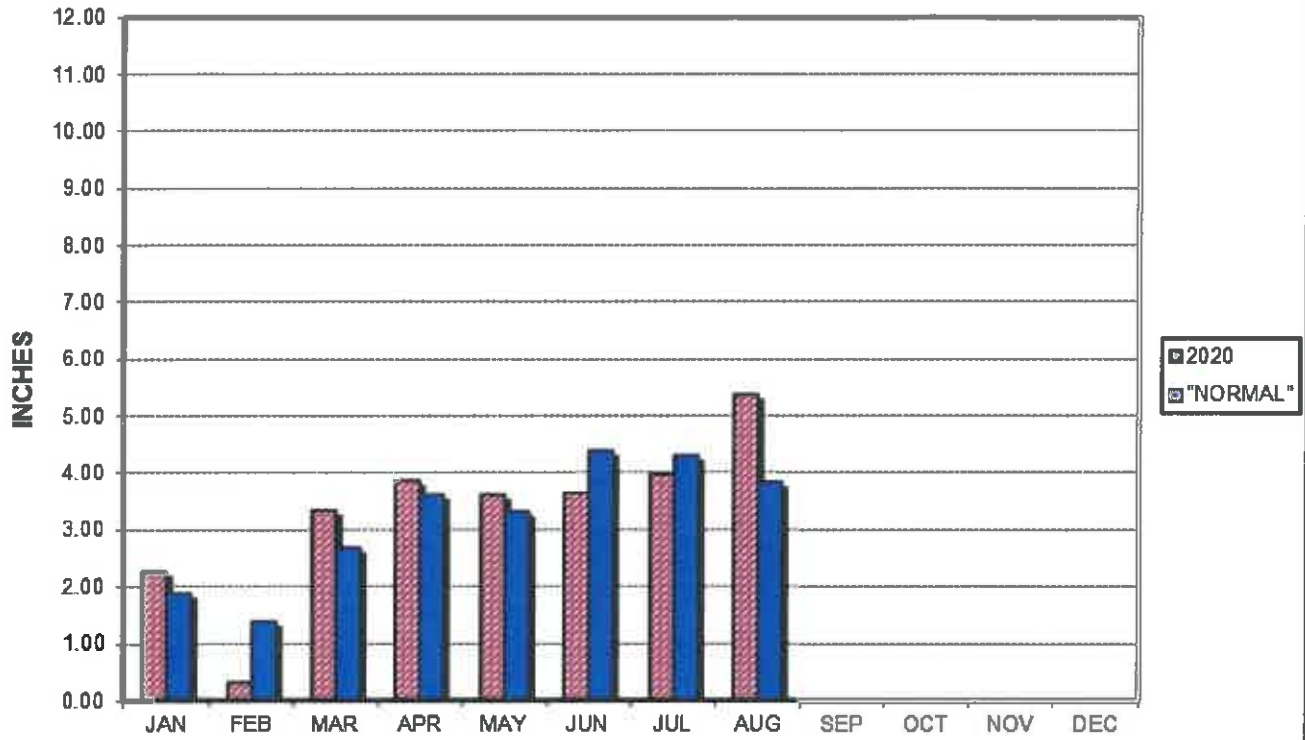


Average Daily Flow/Peak Flow by Area - August, 2020

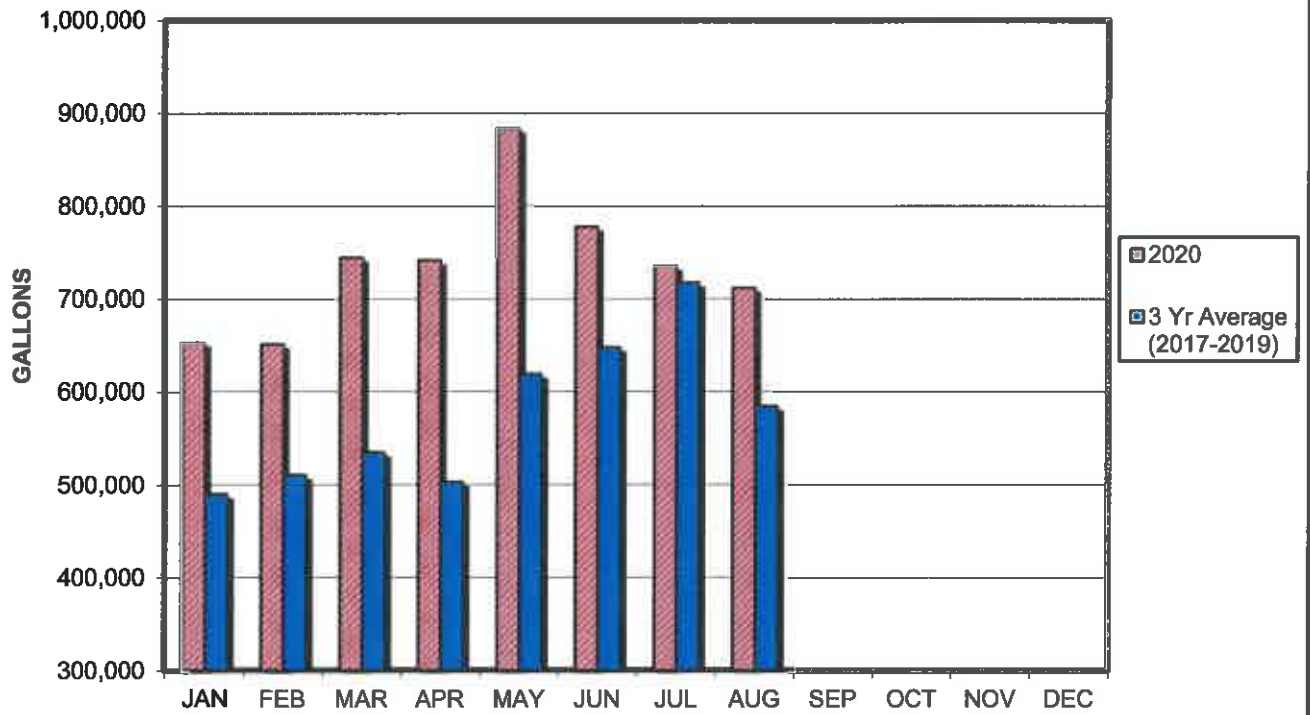
□ Average    ▨ Peak



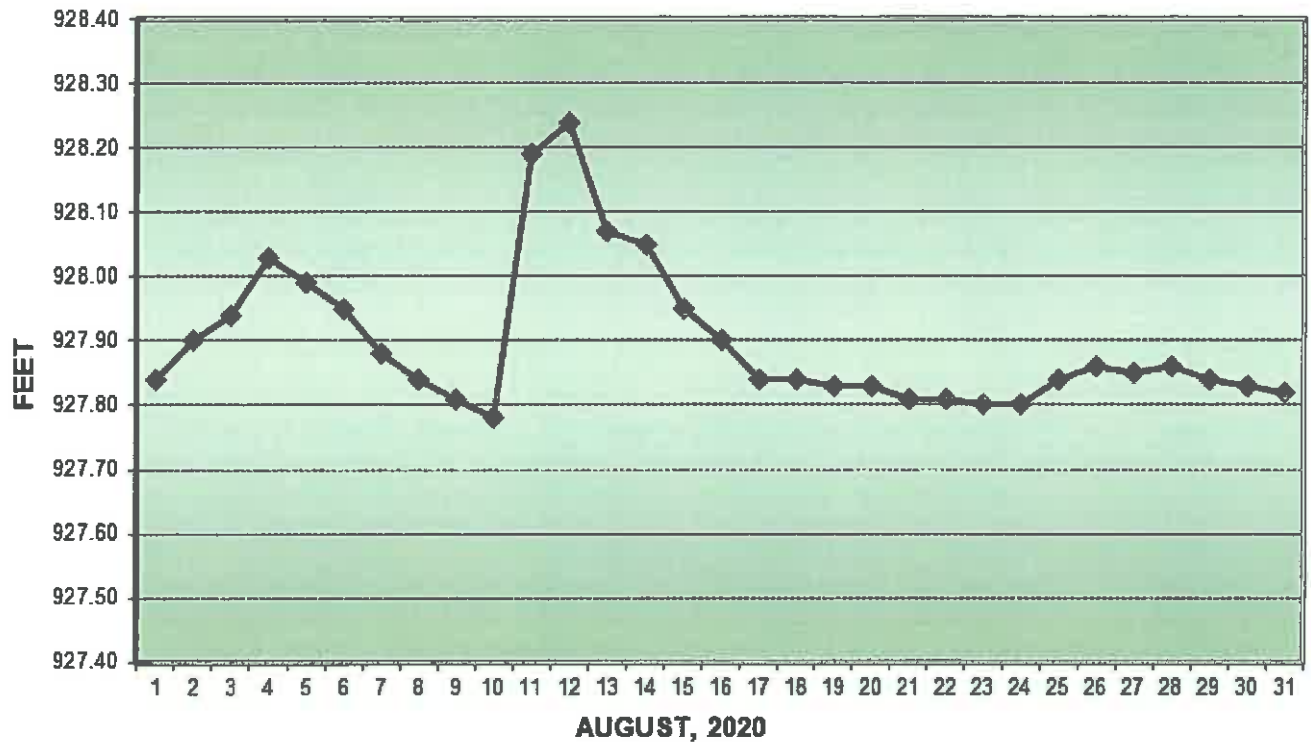
### PRECIPITATION - DELAVAN LAKE, WI



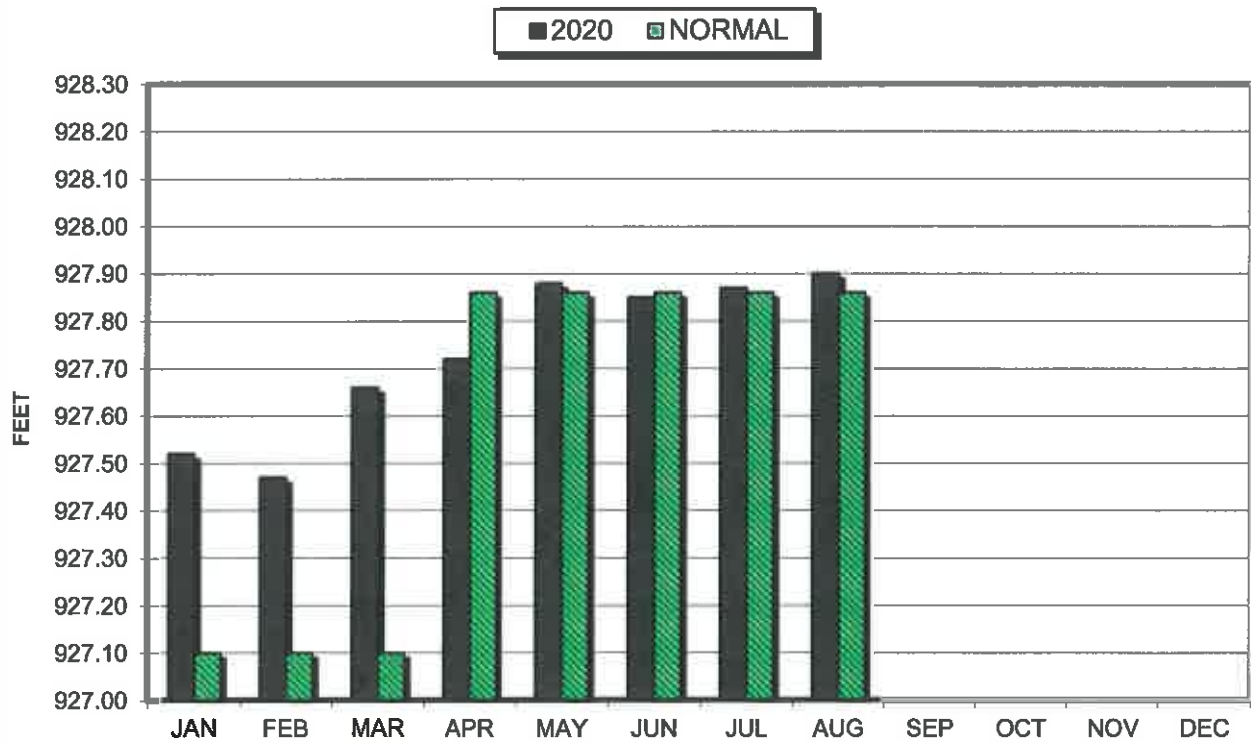
### AVERAGE WASTEWATER FLOWS



### LAKE ELEVATION - DELAVAN LAKE, WI



### AVERAGE LAKE ELEVATION - DELAVAN LAKE, WI



**DATA SUMMARY  
DELAVAN LAKE, WISCONSIN**

Month	Ice On Date	Ice Off Date	Air Temperature		Precipitation		Lake Water Temp.	Average Lake Elevation	Secchi Disc		Cubic Yards Harvested	
			Max.	Min.	Month (In Inches)	Yr to Date (In Inches)			Average (In Feet)	Maximum (In Feet)	Month	YTD
<b>2018</b>												
JAN			54	-12	21	1.70	-	927.73	-	-	-	-
FEB			58	-11	24	1.83	-	927.81	-	-	-	-
MAR		3/24/18	57	15	36	0.76	-	927.54	-	-	-	-
APR			81	17	49	1.67	44	927.59	11.0	9.8	-	-
MAY			96	39	68	4.56	64	927.81	24.0	30.0	275	275
JUN			93	47	70	7.53	70	928.00	7.5	11.0	749	1024
JUL			91	52	72	2.11	78	927.80	7.5	11.4	1484	2508
AUG			91	53	72	6.95	78	927.85	6.8	7.5	1156	3664
SEP			91	36	64	7.37	59	927.93	8.2	12.0	531	4195
OCT			86	24	55	5.54	57	927.94	6.4	8.5	124	4319
NOV			52	15	34	1.50	-	927.80	-	-	-	-
DEC	12/10/18		50	11	31	2.14	-	927.71	-	-	-	-
<b>2019</b>												
JAN	1/11/19	1/8/19	50	-26	12	2.09	-	927.75	-	-	-	-
FEB			44	-4	20	3.35	-	927.72	-	-	-	-
MAR			62	-6	28	2.36	-	927.78	-	-	-	-
APR		3/27/19	79	19	49	2.01	42	927.86	11.0	11.5	-	-
MAY			80	34	57	7.29	59	927.82	23.8	26.0	112	112
JUN			92	46	69	5.05	69	927.85	15.3	20.0	695	807
JUL			92	54	73	3.68	78	927.85	9.0	12.5	1310	2117
AUG			87	51	69	4.89	78	927.86	7.3	8.5	1283	3400
SEP			85	48	67	9.26	71	927.98	5.8	8.0	359	3759
OCT			76	23	50	5.66	58	927.95	6.3	8.0	86	3845
NOV			53	5	24	1.62	-	927.63	-	-	-	-
<b>2020</b>												
JAN	1/17/20		48	1	24	2.26	-	927.52	-	-	-	-
FEB			46	17	-13	0.31	-	927.47	-	-	-	-
MAR		3/13/20	62	22	42	3.33	-	927.66	-	-	-	-
APR			78	23	51	3.85	48	927.72	10.0	12.0	-	-
MAY			88	28	58	3.60	67	927.88	16.4	25.0	202	202
JUN			93	47	70	3.63	75	927.85	8.2	17.0	1423	1625
JUL			94	57	76	3.97	79	927.87	9.6	13.0	1395	3020
AUG			88	50	38	5.38	75	927.90	7.9	9.8	714	3734