

**DELAVAN LAKE SANITARY DISTRICT
ADMINISTRATOR'S REPORT
AUGUST ACTIVITY 2022**

ADMINISTRATION

Lift Station 4 work in progress.

Harvester was retrofitted with a new mesh as an experiment to better collect duck weed and algae and so far during the one week of use it has been a success.

IGA with City of Delavan regarding Lake Lawn system all signatures completed, and document submitted to the County to be recorded.

Lift Station 3 generator charger was replaced, Lift Station 7 transformer in underground pit was replaced.

SCADA call out system needed updates and new apps for alerting staff.

Operators pursued CDL license changes and tests, and all have passed.

Rain is indicating below normal pattern, and this impacts lake levels as well as our charges from WalCoMet.

Land on Brown's Channel has been listed for sale.

SEWER SYSTEM OPERATIONS

Building Sewer Connections

New Connections for the Month - 1

Reconnections for the Month - 0

Disconnections for the Month - 0

Total Number of Structures Connected to Date - 3,115

Total ERU Count for the Month - 4,032

Operation and Maintenance

Average August Daily Wastewater Flow to WalCoMet - 481,425 gallons

Peak August Flow - 562,358 gallons

Diggers Requests Marked for the Month - 111

Emergency Call Outs - 1

Lateral Leaks

Sump Pump Discharges - 4

Current Lateral Leaks - 51

Completed Lateral Leak Orders - 5

The following charts are attached: *Wastewater Flow comparison with Precipitation August, 2022*
Average Daily Wastewater Flow comparison with Peak Flow
Precipitation comparison with "normal"
Wastewater Flow comparison with "normal"
Environmental Data Summary
Daily Lake Elevation for August, 2022
Lake Elevation comparison with "normal"

Lake Monitoring/Lake Level

Precipitation Total for the Month – 4.28 inches
Above Normal – .44 inches
Ice On Date – January 10, 2022
Ice Off Date – March 23, 2022
Secchi Disc Reading Main Lake – 7.5 feet on 8/9/2022

See attached Lake Elevation Graph and Chart.

Lake Information

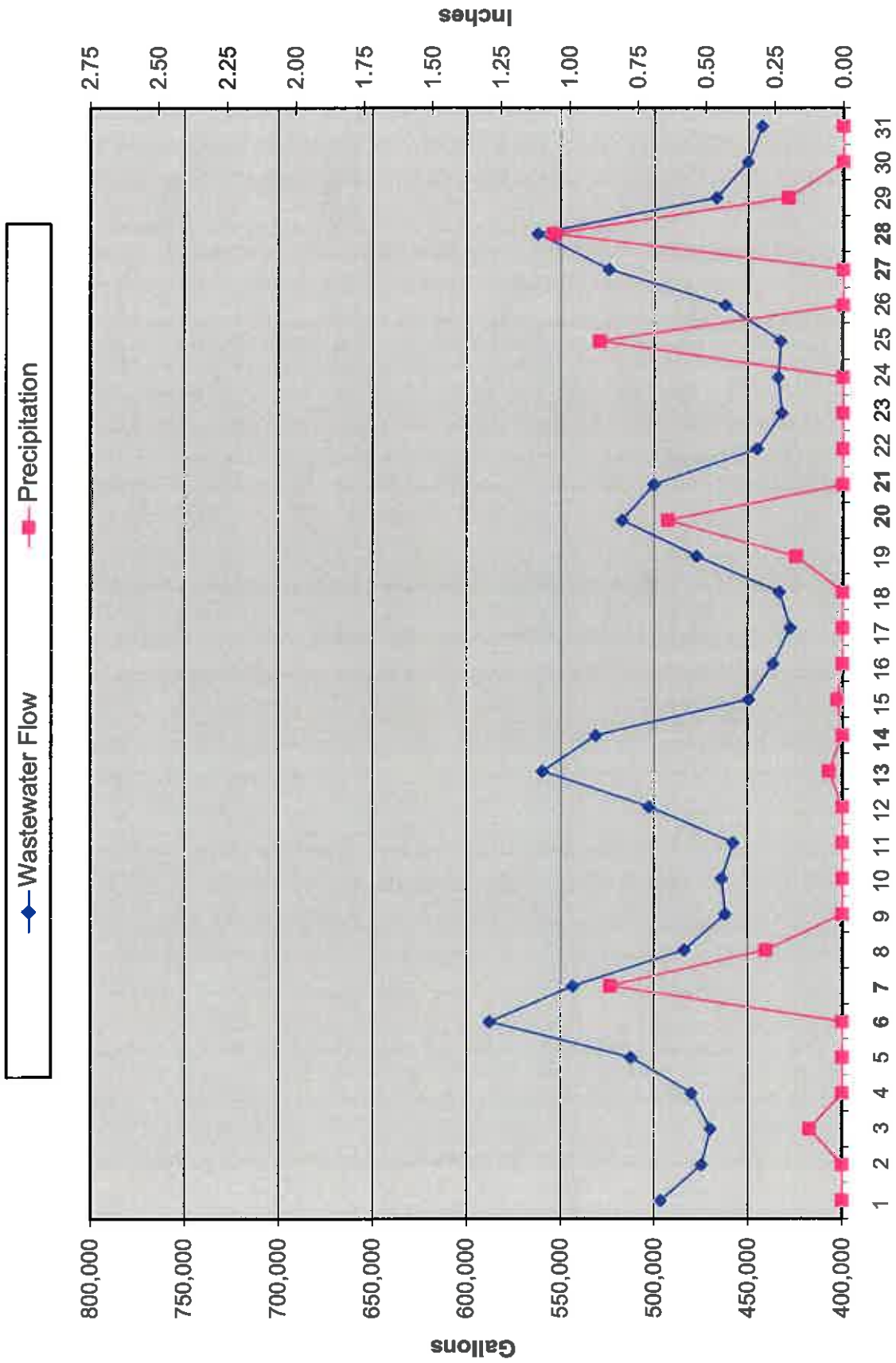
DNR Lake Level Goal – 927.86 feet
Average Lake Elevation – 927.60 feet

Lake Committee

The next meeting of the Lake Committee is scheduled for 7:00 P.M. on Wednesday, October 5, 2022 at the Town Hall.

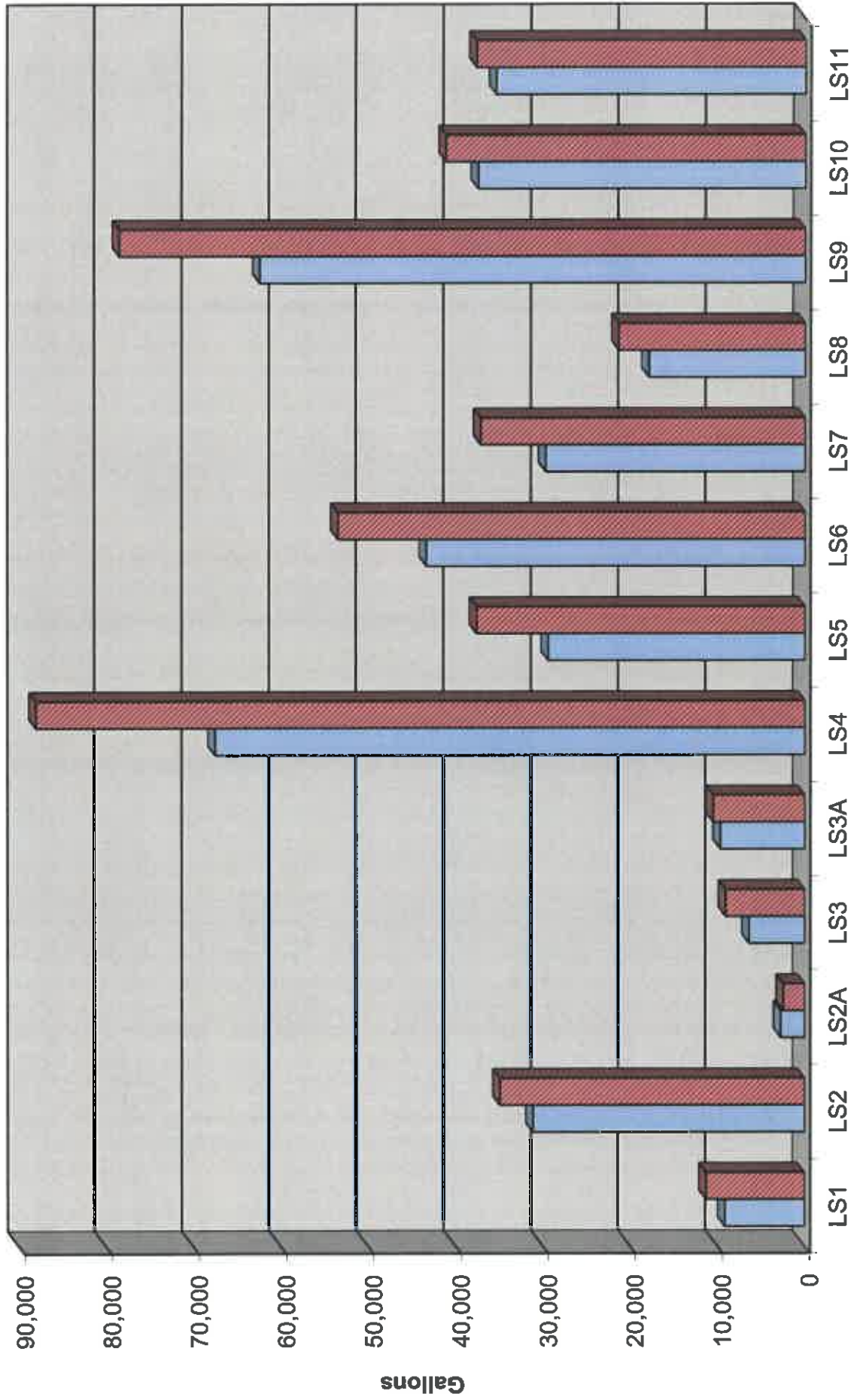
Attachments

Wastewater Flow/Precipitation - August, 2022

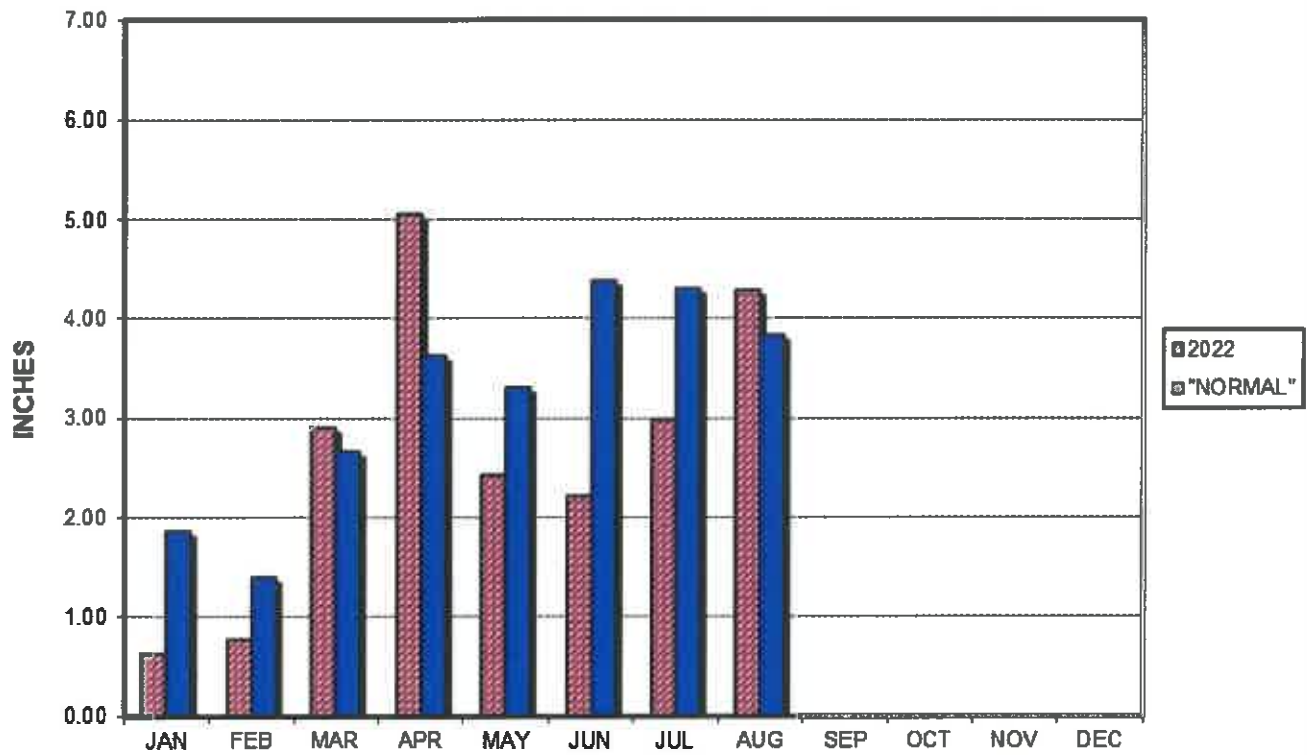


Average Daily Flow/Peak Flow by Area - August, 2022

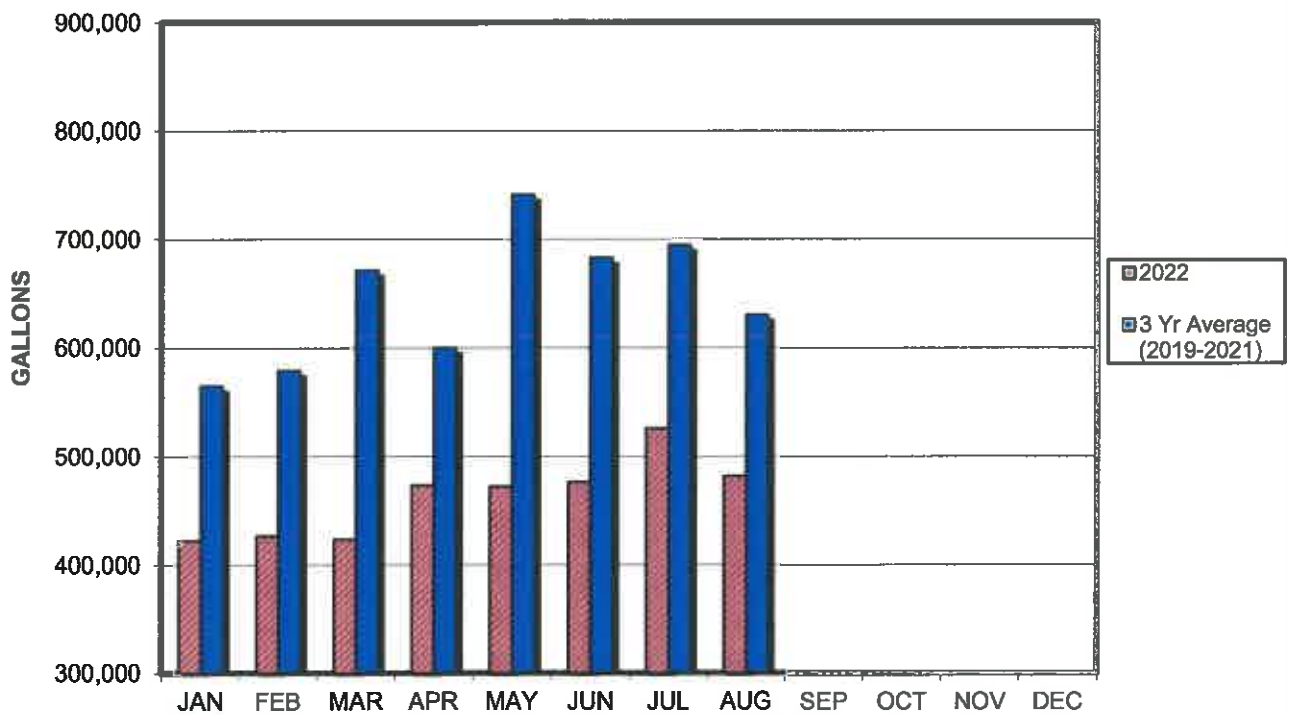
Average Peak



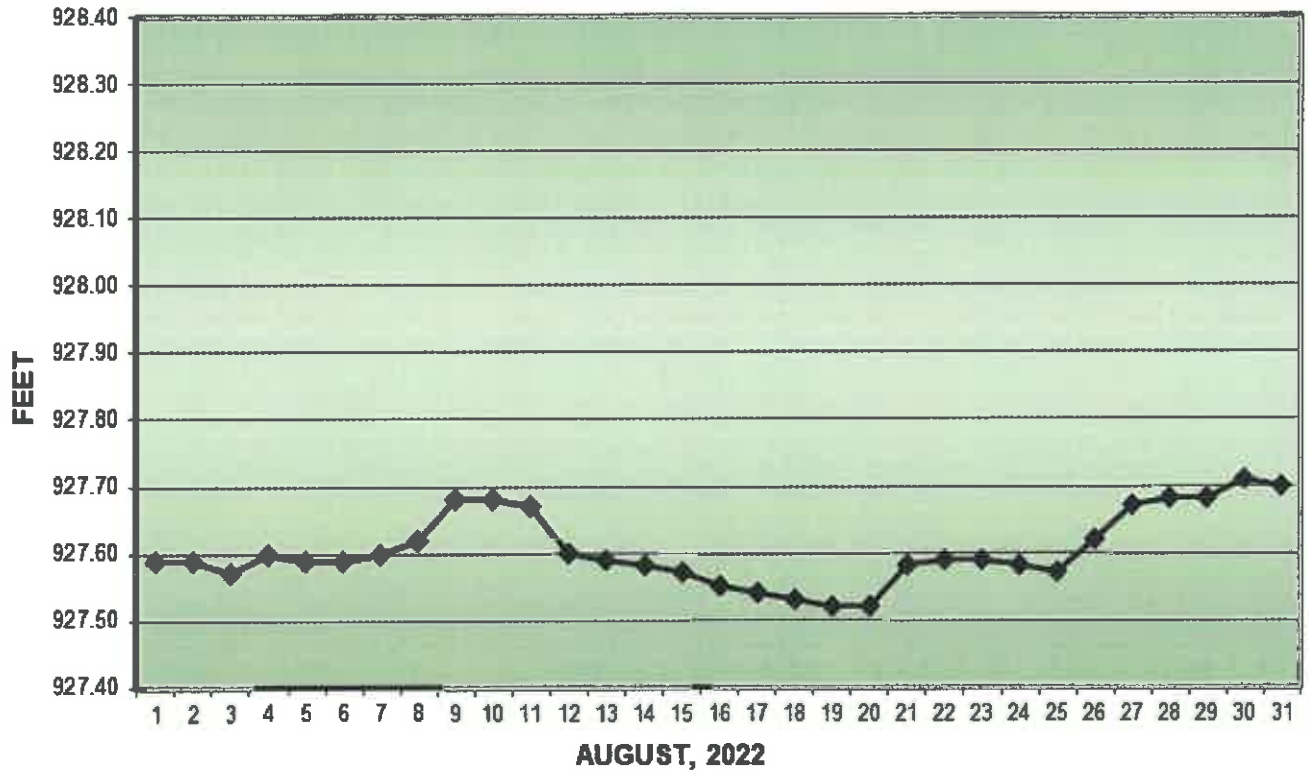
PRECIPITATION - DELAVAN LAKE, WI



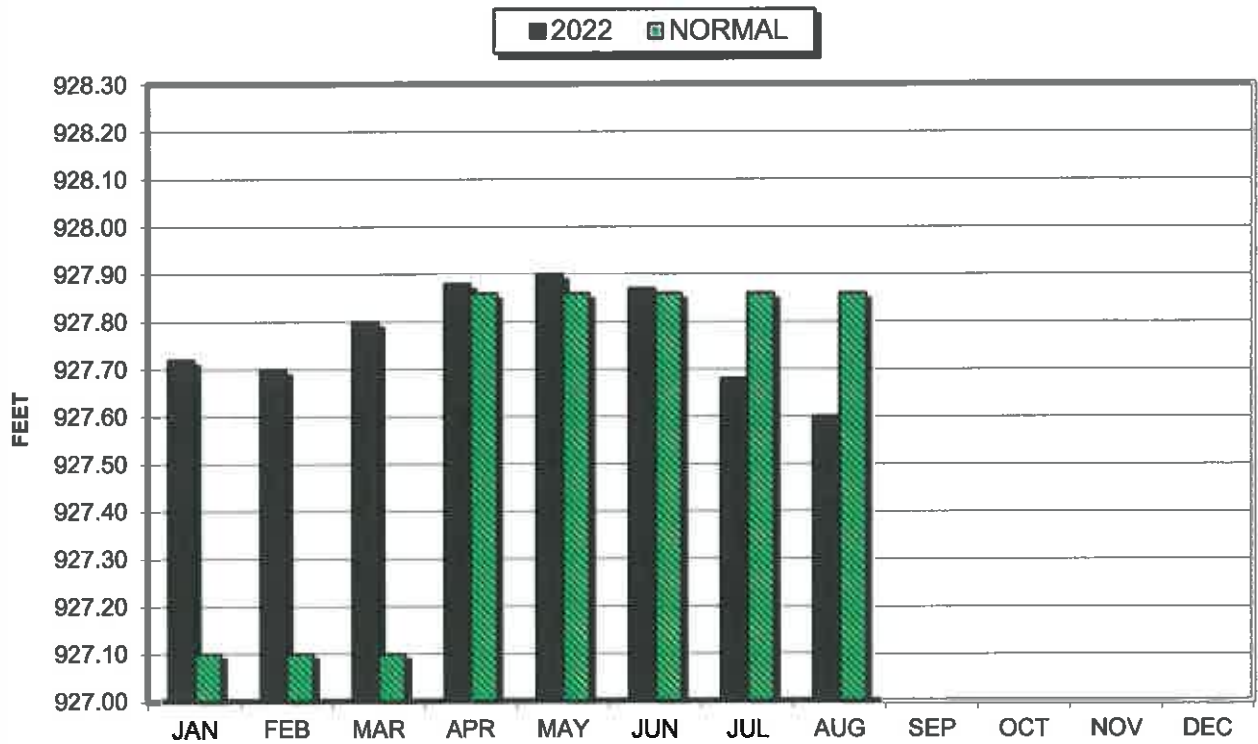
AVERAGE WASTEWATER FLOWS



LAKE ELEVATION - DELAVAN LAKE, WI



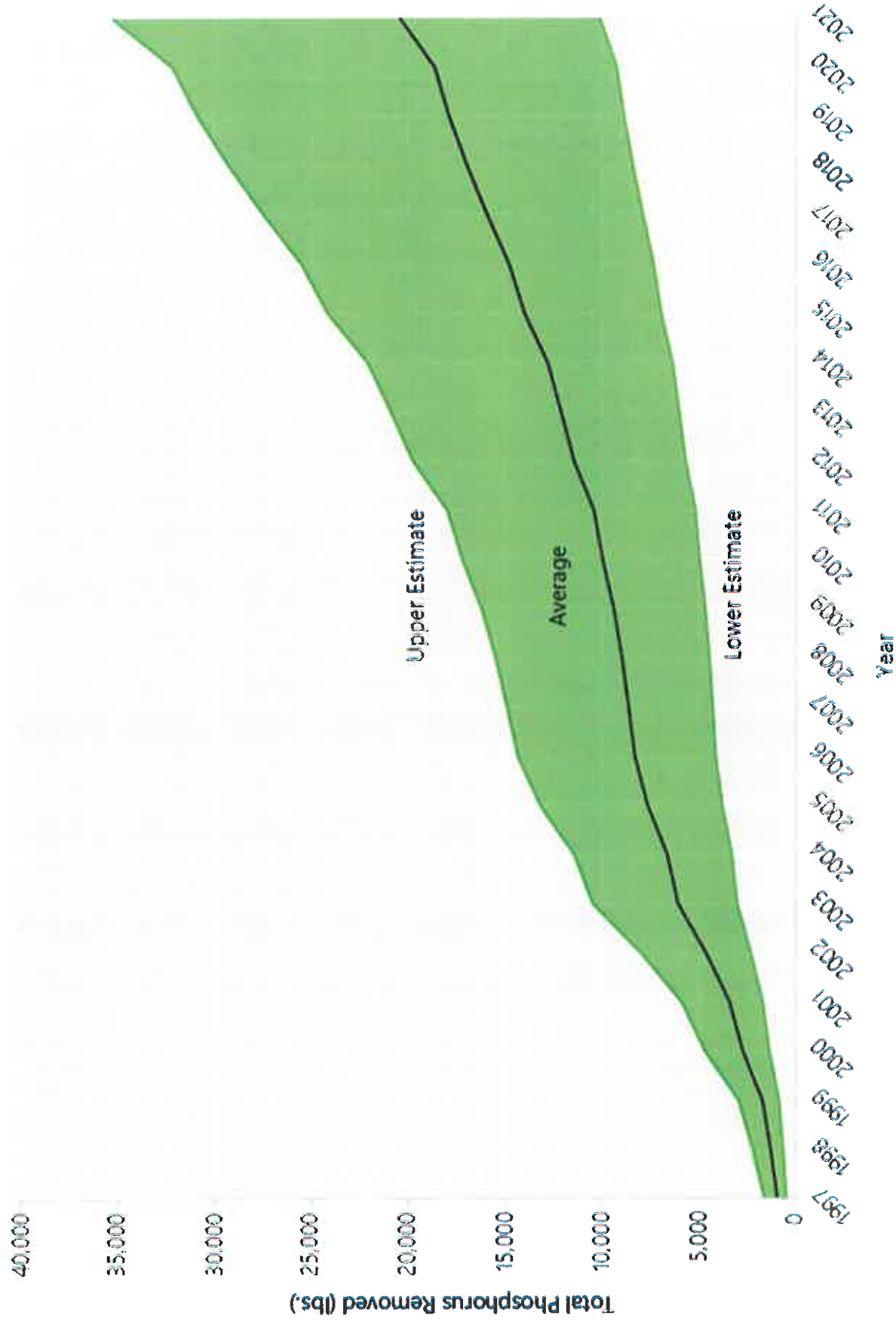
AVERAGE LAKE ELEVATION - DELAVAN LAKE, WI



**DATA SUMMARY
DELAVAN LAKE, WISCONSIN**

Month	Ice On Date	Ice Off Date	Air Temperature			Precipitation		Lake Water Temp.	Average Lake Elevation	Secchi Disc		Cubic Yards Harvested	
			Max.	Min.	Mean	Month (In Inches)	Yr to Date (In Inches)			Average (In Feet)	Maximum (In Feet)	Month	YTD
2020													
JAN	1/17/20		48	1	24	2.26	2.26	-	927.52	-	-	-	-
FEB			46	-13	17	0.31	2.57	-	927.47	-	-	-	-
MAR		3/13/20	62	22	42	3.33	5.90	-	927.66	-	-	-	-
APR			78	23	51	3.85	9.75	48	927.72	10.0	12.0	-	-
MAY			88	28	58	3.60	13.35	67	927.88	16.4	25.0	202	202
JUN			93	47	70	3.63	16.98	75	927.85	8.2	17.0	1423	1625
JUL			94	57	76	3.97	20.95	79	927.87	9.6	13.0	1395	3020
AUG			88	38	50	5.38	26.33	75	927.90	7.9	9.8	714	3734
SEP			82	34	58	3.65	29.98	66	927.87	8.3	12.0	169	3903
OCT			82	26	56	2.90	32.88	62	927.85	6.3	7.0	-	-
NOV			75	22	53	1.92	34.80	47	927.77	14.7	17	-	-
DEC			56	5	31	1.91	36.71	-	927.74	-	-	-	-
2021													
JAN	1/21/21		38	-6	22	1.39	1.39	-	927.58	-	-	-	-
FEB			47	-15	16	1.45	2.84	-	927.50	-	-	-	-
MAR		3/18/21	65	9	37	1.54	4.38	-	927.67	-	-	-	-
APR			84	21	53	0.76	5.14	46	927.75	8.7	9	547	547
MAY			88	30	59	1.52	6.66	67	927.87	18.3	32.0	2495	3042
JUN			95	46	71	2.58	9.24	76	927.84	10.1	19.5	1800	4842
JUL			92	52	72	2.87	12.11	78	927.89	10.2	14.0	1910	6752
AUG			93	51	72	3.96	16.07	77	927.78	9.0	12.0	595	7347
SEP			89	45	67	1.33	17.40	66	927.53	7.8	11.0	59	7406
OCT			87	29	58	4.78	22.18	67	927.55	9.3	11.0	-	-
NOV			66	15	41	0.46	22.64	51	927.57	9.7	13	-	-
DEC			64	7	35	1.81	24.45	-	927.61	-	-	-	-
2022													
JAN	1/10/22		40	-18	11	0.63	0.63	-	927.72	-	-	-	-
FEB			49	-3	23	0.77	1.40	-	927.70	-	-	-	-
MAR		3/23/22	73	6	34	2.91	4.31	-	927.80	-	-	-	-
APR			81	24	52	5.05	9.36	42	927.88	20.0	20.0	387	387
MAY			91	33	62	2.42	11.78	62	927.90	12.7	20.0	2184	2571
JUN			98	47	72	2.21	13.99	74	927.87	9.7	13.0	1431	4002
JUL			90	52	71	2.98	16.97	79	927.68	8.7	10.0	1585	5587
AUG			92	52	72	4.28	21.25	79	927.60	6.6	9.0	-	-

Delavan Lake Cumulative Phosphorous Removal by Harvesting: 1997-2021



Note: The mean annual total phosphorous removal is the average of three phosphorous removal calculations from studies on Pewaukee Lake by Wisconsin Lutheran College, a study on Whitewater and Rice Lakes, and a study in Minnesota.

Source: Delavan Lake Sanitary District and SEWRPC