

## MEMO

TO: Town of Delavan Lake Committee  
FROM: Delavan Lake Sanitary District  
RE: DLSD Lake Management Activities for August  
DATE: September 1, 2022

### LAKE MONITORING RECORDS

August Precipitation – 4.28 inches  
Number of Run-off events – 3  
Precipitation Year-to-date – 21.25 inches  
Ice On Date – January 10, 2022  
Ice Off Date – March 23, 2022

August Secchi Disc Readings: Maximum – 9.0 feet  
Average – 6.6 feet

### LAKE LEVEL

DNR Summer Lake Elevation Expectations – 927.86 feet  
Average Lake Elevation – 927.60 feet

### LAKE MANAGEMENT PROGRAM

New fine mesh experiment with Aquarius to better capture algae and duckweed is going thru tests and evaluations while in use.

We were approved for 2 Healthy Lakes grants for 2022. One grant has been completed and the other grant is scheduled for the fall.

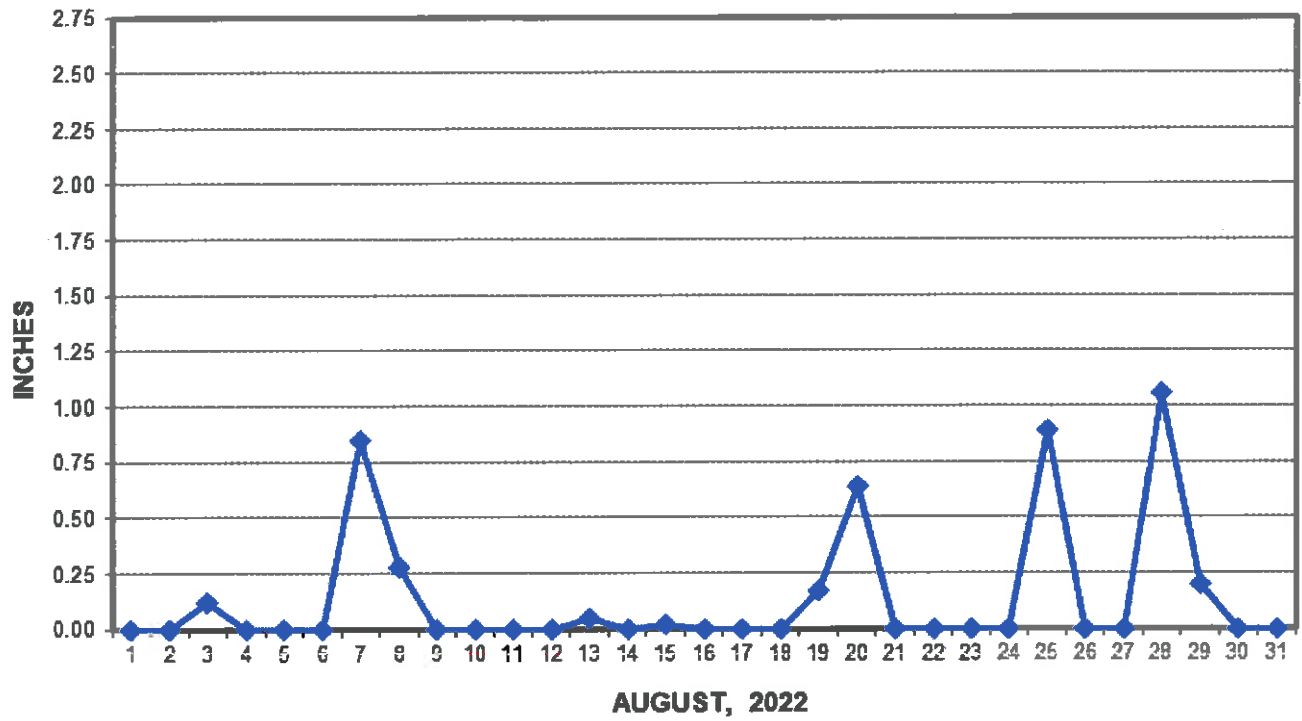
College students are leaving and the crew has been diminished.

IGA with the City of Delavan to provide sewer service to Lake Lawn Lodge is approved and submitted to the County to be recorded.

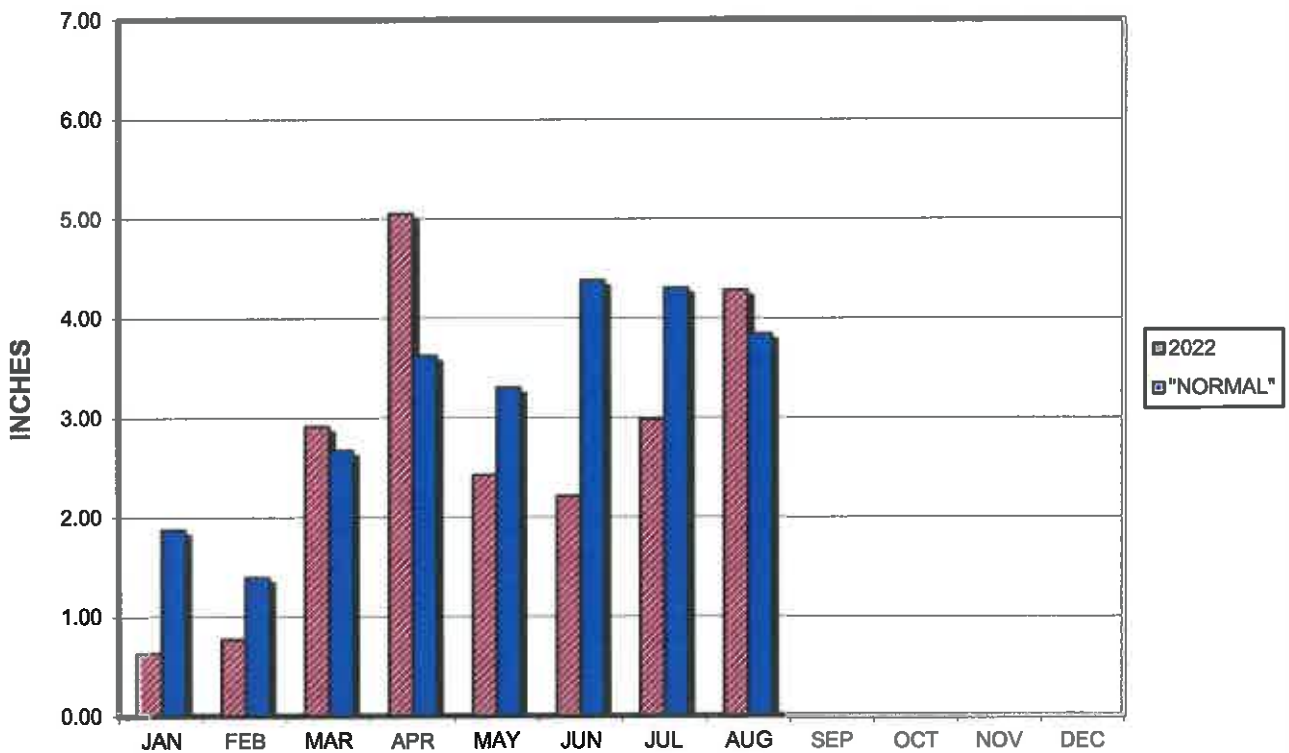
Rain is indicating a below normal pattern, and this will affect lake levels over time as minimum DNR required flow rates are maintained.

Encl.: (4)

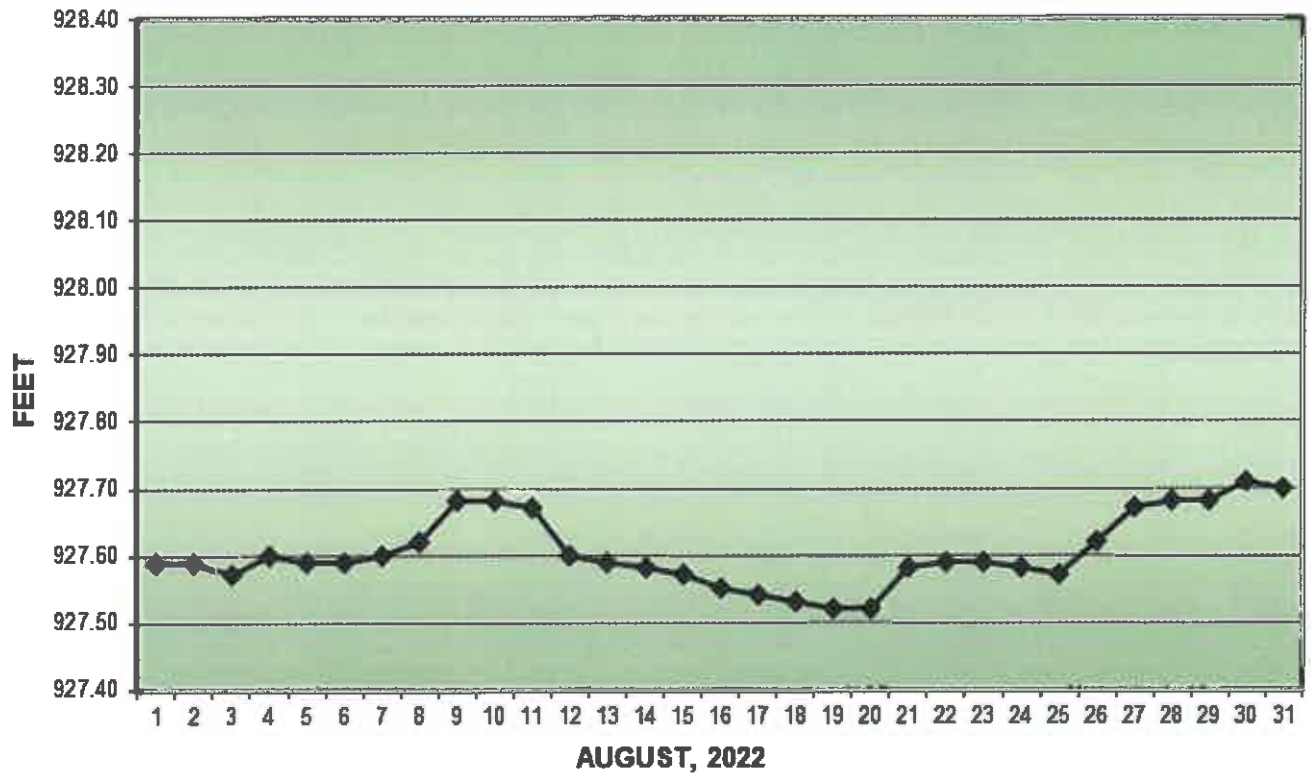
### PRECIPITATION - DELAVAN LAKE, WI



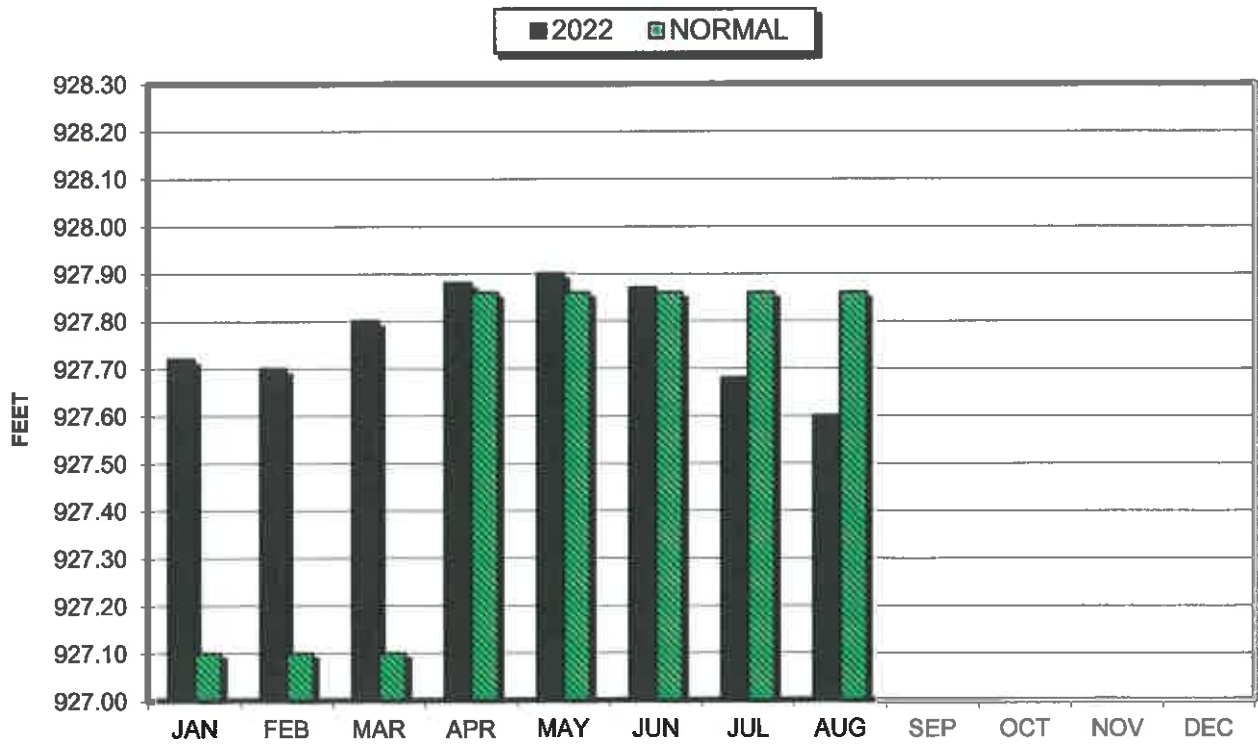
### PRECIPITATION - DELAVAN LAKE, WI



### LAKE ELEVATION - DELAVAN LAKE, WI

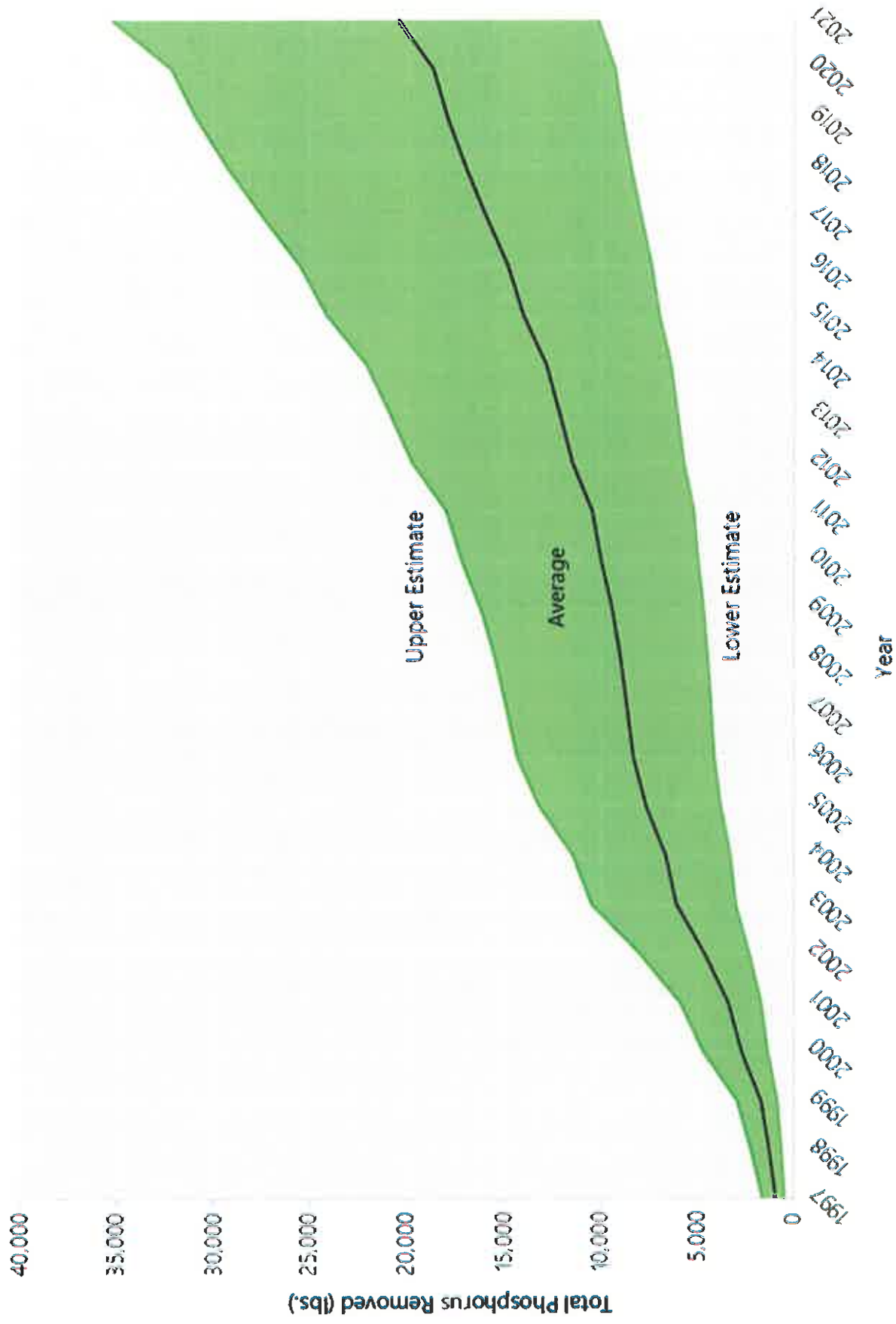


### AVERAGE LAKE ELEVATION - DELAVAN LAKE, WI





## Delavan Lake Cumulative Phosphorous Removal by Harvesting: 1997-2021



Note: The mean annual total phosphorous removal is the average of three phosphorous removal calculations from studies on Pewaukee Lake by Wisconsin Lutheran College, a study on Whitewater and Rice Lakes, and a study in Minnesota.

Source: Delavan Lake Sanitary District and SEWRPC