

MEMO

TO: Town of Delavan Lake Committee
FROM: Delavan Lake Sanitary District
RE: DLSD Lake Management Activities for September
DATE: October 2, 2023

LAKE MONITORING RECORDS

September Precipitation – 3.78 inches
Number of Run-off events – 2
Precipitation Year-to-date – 24.57 inches
Ice On Date – December 19, 2022
Ice Off Date – March 10, 2023

September Secchi Disc Readings: Maximum – 12.0 feet
Average – 8.7 feet

LAKE LEVEL

DNR Summer Lake Elevation Expectations – 927.86 feet
Average Lake Elevation – 927.75 feet

LAKE MANAGEMENT PROGRAM

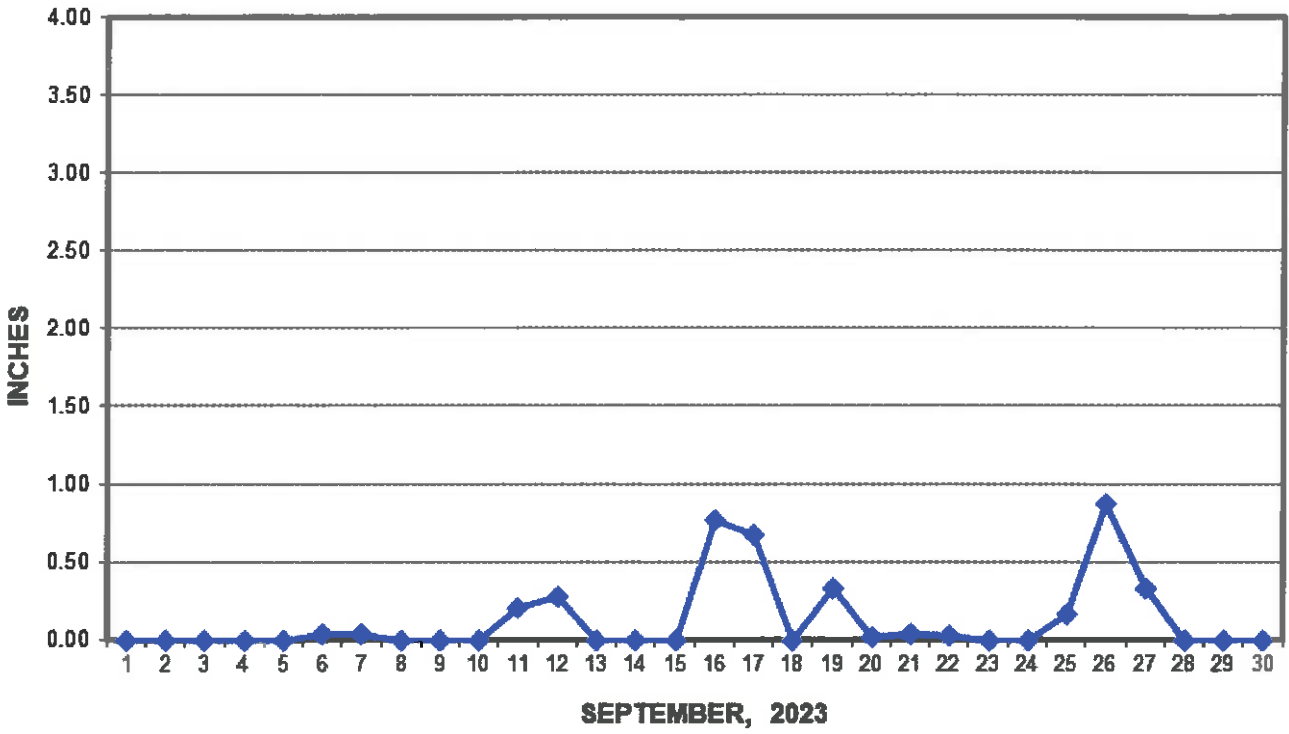
Harvesting operations will continue with the focus on areas of most concern around the lake. Skimming for wild celery will continue as it is still releasing and creating floating mats. Due to this, we recorded a daily harvest total of 200 cubic yards on September 21, 2023. Also due to heavy rains we have been dumping the weeds at our shop for the last two weeks till things dry up. Our final day of harvesting per our DNR permit is October 15th.

Pennywort spraying was completed in mid-September.

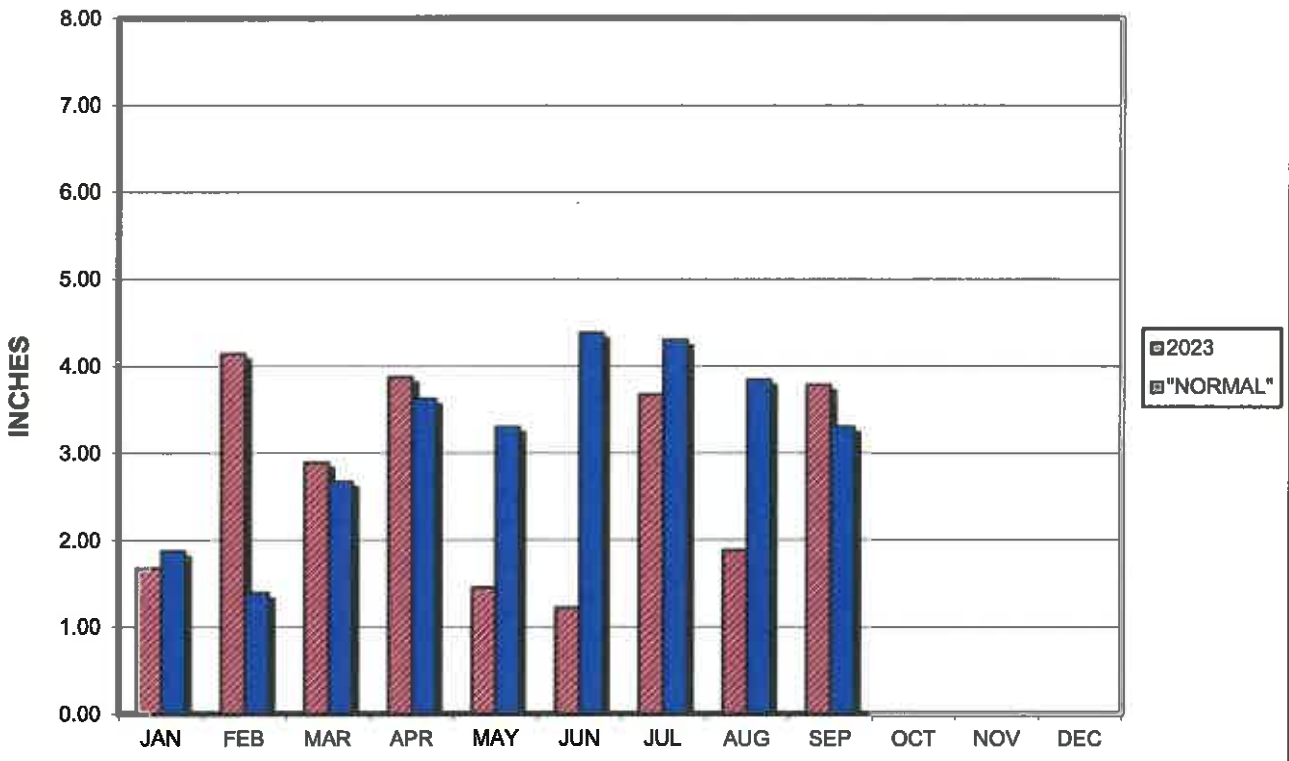
The sewer utility is busy working with projects on HWY O, LS #4 and Borg Road easements.

Encl.: (3)

PRECIPITATION - DELAVAN LAKE, WI



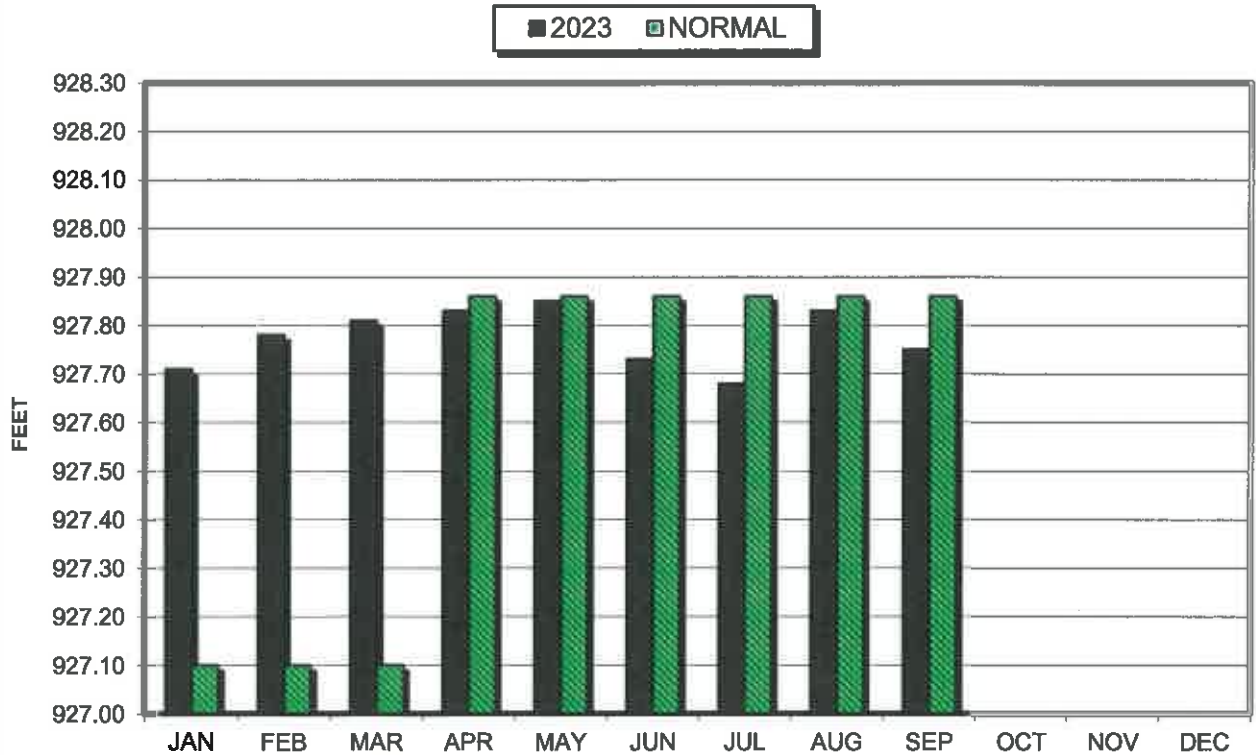
PRECIPITATION - DELAVAN LAKE, WI



LAKE ELEVATION - DELAVAN LAKE, WI



AVERAGE LAKE ELEVATION - DELAVAN LAKE, WI



**DATA SUMMARY
DELAVAN LAKE, WISCONSIN**

Month	Ice On Date	Ice Off Date	Air Temperature		Precipitation		Lake Water Temp.	Average Lake Elevation	Secchi Disc		Cubic Yards Harvested	
			Max.	Min.	Month (In Inches)	Yr to Date (In Inches)			Average (In Feet)	Maximum (In Feet)	Month	YTD
2021												
JAN	1/21/21		38	-6	1.39	1.39	-	927.58	-	-	-	-
FEB			47	-15	1.45	2.84	-	927.50	-	-	-	-
MAR		3/18/21	65	9	1.54	4.38	-	927.67	-	-	-	-
APR			84	21	0.76	5.14	46	927.75	8.7	9	-	-
MAY			88	30	1.52	6.66	67	927.87	18.3	32.0	547	547
JUN			95	46	2.58	9.24	76	927.84	10.1	19.5	2495	3042
JUL			92	52	2.87	12.11	78	927.89	10.2	14.0	1800	4842
AUG			93	51	3.96	16.07	77	927.78	9.0	12.0	1910	6752
SEP			89	45	1.33	17.40	66	927.53	7.8	11.0	595	7347
OCT			87	29	4.78	22.18	67	927.55	9.3	11.0	59	7406
NOV			66	15	0.46	22.64	51	927.57	9.7	13	-	-
DEC			64	7	1.81	24.45	-	927.61	-	-	-	-
2022												
JAN	1/10/22		40	-18	0.63	0.63	-	927.72	-	-	-	-
FEB			49	-3	0.77	1.40	-	927.70	-	-	-	-
MAR		3/23/22	73	6	2.91	4.31	-	927.80	-	-	-	-
APR			81	24	5.05	9.36	42	927.88	20.0	20.0	387	387
MAY			91	33	2.42	11.78	62	927.90	12.7	20.0	2184	2571
JUN			98	47	2.21	13.99	74	927.87	9.7	13.0	1431	4002
JUL			90	52	2.98	16.97	79	927.68	8.7	10.0	1585	5587
AUG			92	52	4.28	21.25	79	927.60	6.6	9.0	305	5892
SEP			85	35	7.51	28.76	59	927.85	6.7	7.0	-	-
OCT			78	29	1.67	30.43	-	927.79	-	-	39	5931
NOV			75	9	1.23	31.66	51	927.77	12.3	15.0	-	-
DEC	12/19/22		56	-13	1.67	33.33	-	927.72	-	-	-	-
2023												
JAN			49	-14	1.67	1.67	-	927.71	-	-	-	-
FEB			51	-7	4.14	5.81	-	927.78	-	-	-	-
MAR		3/10/23	69	9	2.89	8.70	-	927.81	-	-	-	-
APR			82	26	3.87	12.57	49	927.83	8.0	9.0	-	-
MAY			91	35	1.45	14.02	62	927.85	21.8	38.0	855	855
JUN			92	43	1.22	15.24	70	927.73	9.6	17.0	1553	2408
JUL			92	53	3.67	18.91	75	927.68	6.0	8.0	1558	3966
AUG			97	44	1.88	20.79	76	927.83	7.3	10.0	1620	5586
SEP			93	42	3.78	24.57	68	927.75	8.7	12.0	854	6440