

## MEMO

TO: Town of Delavan Lake Committee  
FROM: Delavan Lake Sanitary District  
RE: DLSD Lake Management Activities for October  
DATE: November 2, 2023

### LAKE MONITORING RECORDS

October Precipitation – 3.01 inches  
Number of Run-off events – 1  
Precipitation Year-to-date – 27.58 inches  
Ice On Date – December 19, 2022  
Ice Off Date – March 10, 2023

September Secchi Disc Readings: Maximum – 12.0 feet  
Average – 8.7 feet

### LAKE LEVEL

DNR Summer Lake Elevation Expectations – 927.86 feet  
Average Lake Elevation – 927.89 feet

### LAKE MANAGEMENT PROGRAM

Harvesting operations are done for the year and maintenance has begun on all equipment. We had the 2<sup>nd</sup> highest totals for weeds harvested this year. Summer staff has been let go for the season and most will be back for next summer. We are working with Aquarius Systems to modify the transport barge to make it more stable for next year due to the increase in wake boats on the lake as well. We have had an increase in pennywort in the outlet along the condo side late this season, we will be monitoring it closely and researching remedies to employ next spring.

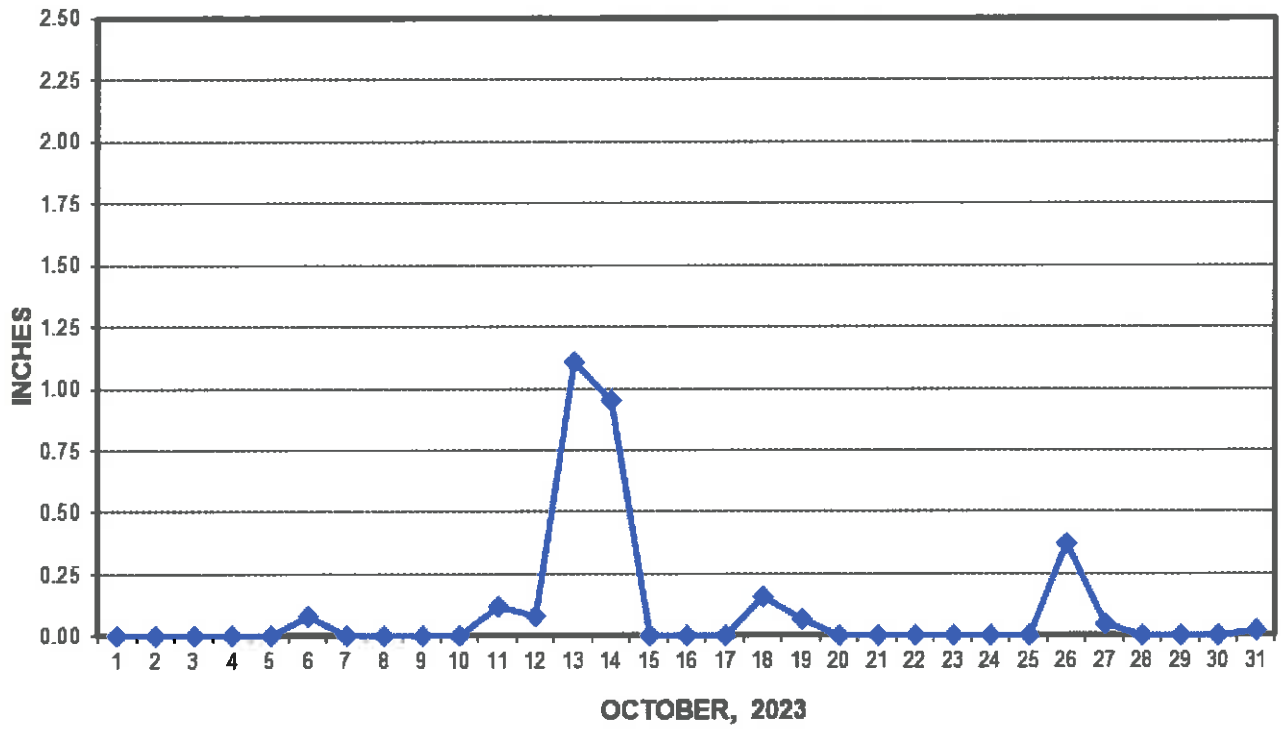
Lift Station #4 is in the final stages of completion.

Lift Station #2A generator is in progress to be replaced.

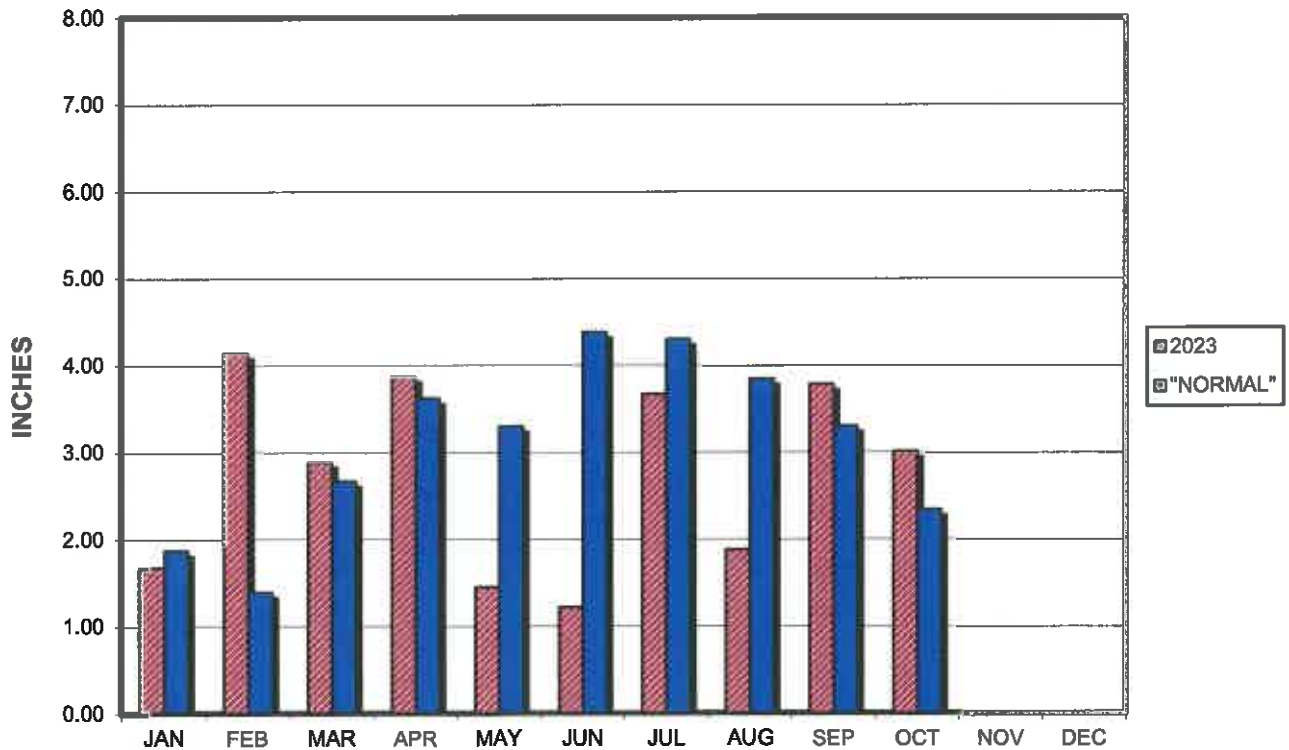
Lift Station #2A and #5 are in review for possible upgrades in the future.

Encl.: (3)

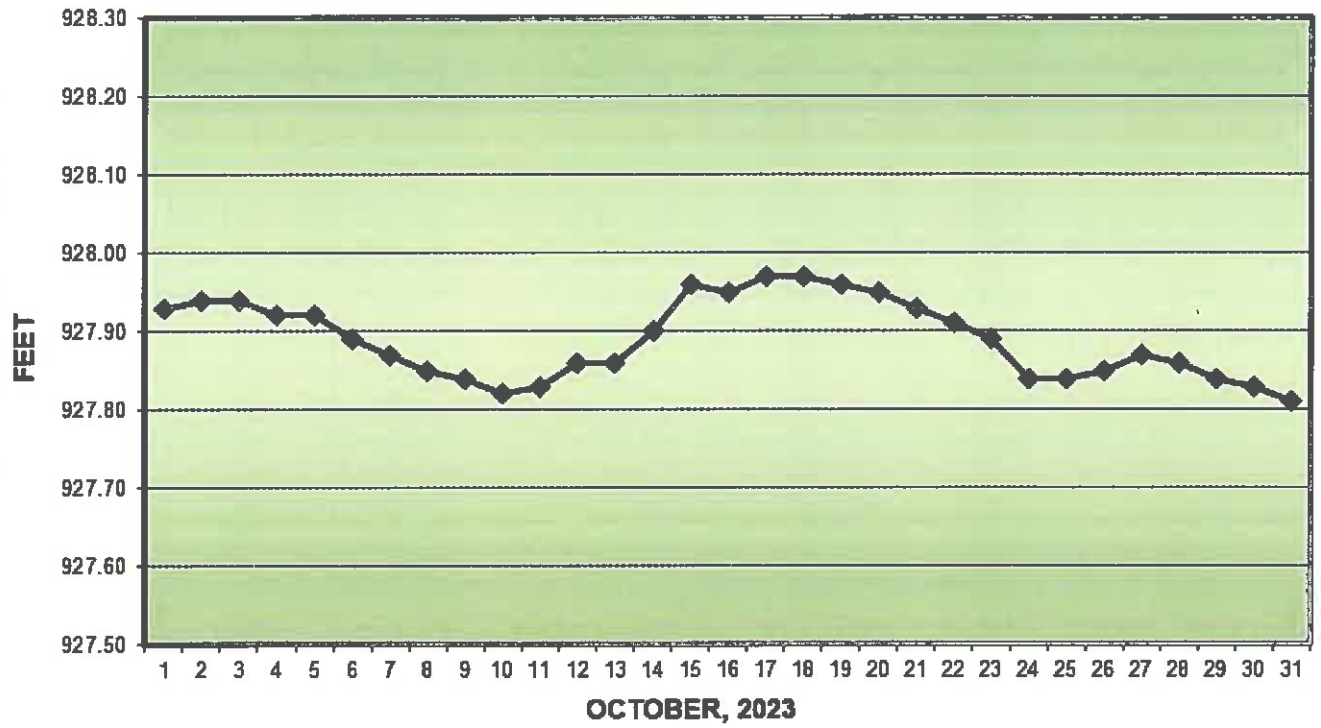
### PRECIPITATION - DELAVAN LAKE, WI



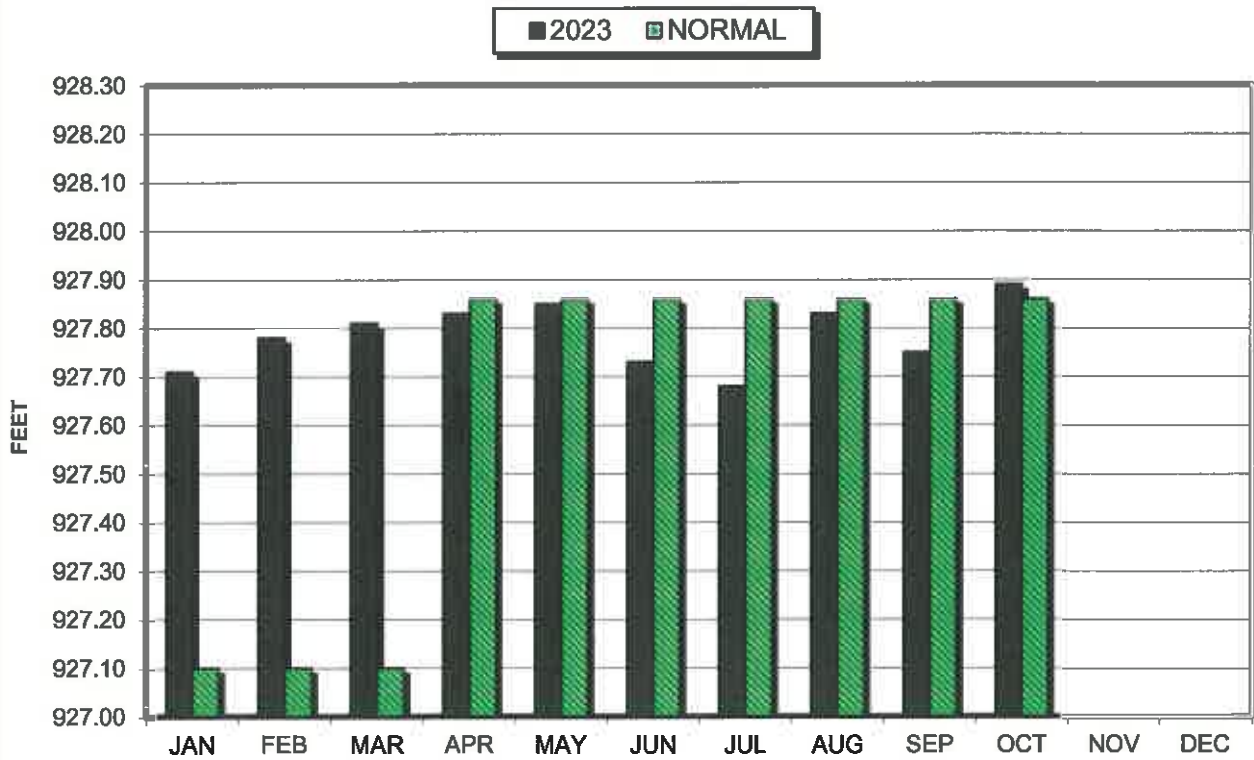
### PRECIPITATION - DELAVAN LAKE, WI



### LAKE ELEVATION - DELAVAN LAKE, WI



### AVERAGE LAKE ELEVATION - DELAVAN LAKE, WI



**DATA SUMMARY  
DELAVAN LAKE, WISCONSIN**

Month	Ice On Date	Ice Off Date	Air Temperature			Precipitation		Lake Water Temp.	Average Lake Elevation	Secchi Disc		Cubic Yards Harvested	
			Max.	Min.	Mean	Month (In Inches)	Yr to Date (In Inches)			Average (In Feet)	Maximum (In Feet)	Month	YTD
<b>2021</b>													
JAN	1/21/21		38	-6	22	1.39	1.39	-	927.58	-	-	-	-
FEB			47	-15	16	1.45	2.84	-	927.50	-	-	-	-
MAR		3/18/21	65	9	37	1.54	4.38	-	927.67	-	-	-	-
APR			84	21	53	0.76	5.14	46	927.75	8.7	9	-	-
MAY			88	30	59	1.52	6.66	67	927.87	18.3	32.0	547	547
JUN			95	46	71	2.58	9.24	76	927.84	10.1	19.5	2495	3042
JUL			92	52	72	2.87	12.11	78	927.89	10.2	14.0	1800	4842
AUG			93	51	72	3.96	16.07	77	927.78	9.0	12.0	1910	6752
SEP			89	45	67	1.33	17.40	66	927.53	7.8	11.0	595	7347
OCT			87	29	58	4.78	22.18	67	927.55	9.3	11.0	59	7406
NOV			66	15	41	0.46	22.64	51	927.57	9.7	13	-	-
DEC			64	7	35	1.81	24.45	-	927.61	-	-	-	-
<b>2022</b>													
JAN	1/10/22		40	-18	11	0.63	0.63	-	927.72	-	-	-	-
FEB			49	-3	23	0.77	1.40	-	927.70	-	-	-	-
MAR		3/23/22	73	6	34	2.91	4.31	-	927.80	-	-	-	-
APR			81	24	52	5.05	9.36	42	927.88	20.0	20.0	387	387
MAY			91	33	62	2.42	11.78	62	927.90	12.7	20.0	2184	2571
JUN			98	47	72	2.21	13.99	74	927.87	9.7	13.0	1431	4002
JUL			90	52	71	2.98	16.97	79	927.68	8.7	10.0	1585	5587
AUG			92	52	72	4.28	21.25	79	927.60	6.6	9.0	305	5892
SEP			85	35	60	7.51	28.76	59	927.85	6.7	7.0	39	5931
OCT			78	29	54	1.67	30.43	-	927.79	-	-	-	-
NOV			75	9	42	1.23	31.66	51	927.77	12.3	15.0	-	-
DEC	12/19/22		56	-13	22	1.67	33.33	-	927.72	-	-	-	-
<b>2023</b>													
JAN			49	-14	18	1.67	1.67	-	927.71	-	-	-	-
FEB			51	-7	22	4.14	5.81	-	927.78	-	-	-	-
MAR		3/10/23	69	9	39	2.89	8.70	-	927.81	-	-	-	-
APR			82	26	54	3.87	12.57	49	927.83	8.0	9.0	-	-
MAY			91	35	63	1.45	14.02	62	927.85	21.8	38.0	855	855
JUN			92	43	67	1.22	15.24	70	927.73	9.6	17.0	1553	2408
JUL			92	53	72	3.67	18.91	75	927.68	6.0	8.0	1558	3966
AUG			97	44	71	1.88	20.79	76	927.83	7.3	10.0	1620	5586
SEP			93	42	68	3.78	24.57	68	927.75	8.7	12.0	854	6440
OCT			86	24	55	3.01	27.58	-	927.89	-	-	146	6586