

**DELAVAN LAKE SANITARY DISTRICT  
ADMINISTRATOR'S REPORT  
NOVEMBER ACTIVITY 2020**

**ADMINISTRATION**

First Net system is up and running with a few more tweaks to make phones more stable.

LS#3A rehab project Pre-construction meeting was held, and easements signed by owner.

Dredging program is still in evaluation stages and waiting for permits from the DNR.

Budget 2021 public hearing is complete.

Televising and sewer jetting will be postponed due to one employee with COVID symptoms.

Crews is busy with diggers and manhole adjustments for various road projects.

Harvesters all being removed from the lake and begin winterizing process.

ERU's are set for 2021.

**SEWER SYSTEM OPERATIONS**

**Building Sewer Connections**

**New Connections for the Month - 0**

**Reconnections for the Month – 0**

**Disconnections for the Month – 0**

**Total Number of Structures Connected to Date – 3,111**

**Total ERU Count for the Month – 4,020**

**Operation and Maintenance**

**Average November Daily Wastewater Flow to WalCoMet – 545,795 gallons**

**Peak November Flow – 638,014 gallons**

**Diggers Requests Marked for the Month – 82**

**Emergency Call Outs – 1**

The following charts are attached: *Wastewater Flow comparison with Precipitation for November, 2020*

*Average Daily Wastewater Flow comparison with Peak Flow*

*Precipitation comparison with "normal"*

*Wastewater Flow comparison with "normal"*

*Environmental Data Summary*

*Daily Lake Elevation for November, 2020*

*Lake Elevation comparison with "normal"*

## **Lake Monitoring/Lake Level**

**Precipitation Total for the Month – 1.92 inches**

**Below Normal – .32 inches**

**Ice On Date – January 17, 2020**

**Ice Off Date – March 13, 2020**

**Secchi Disc Reading Main Lake – 17.0 feet on 11/3/2020**

*See attached Lake Elevation Graph and Chart.*

## **Lake Information**

**DNR Lake Level Goal – 927.86 feet**

**Average Lake Elevation – 927.77 feet**

**Number of Dam Inspections – 30**

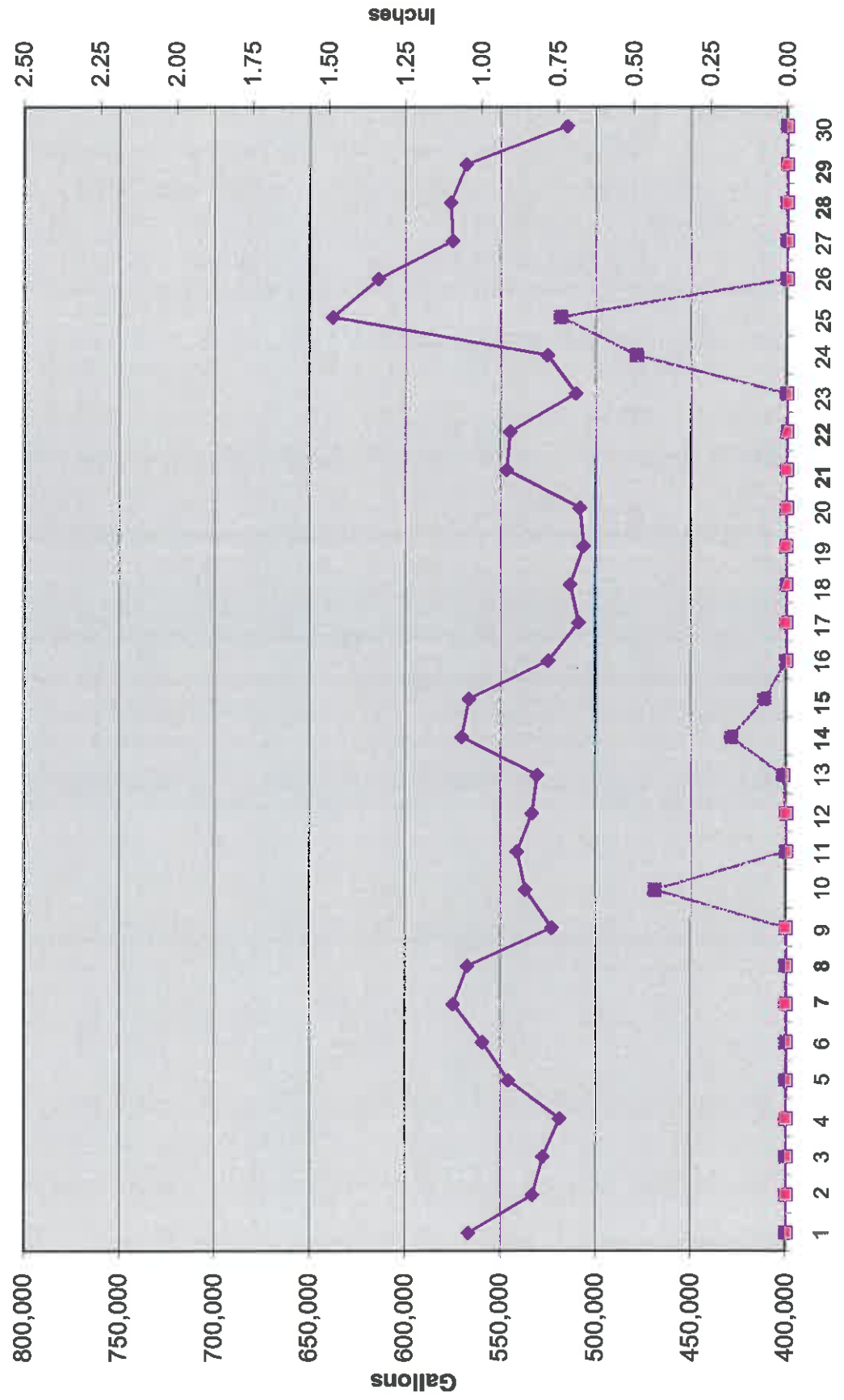
## **Lake Committee**

The next meeting of the Lake Committee is scheduled for 7:00 P.M. on Wednesday, January 6, 2021 at the Town Hall.

## **Attachments**

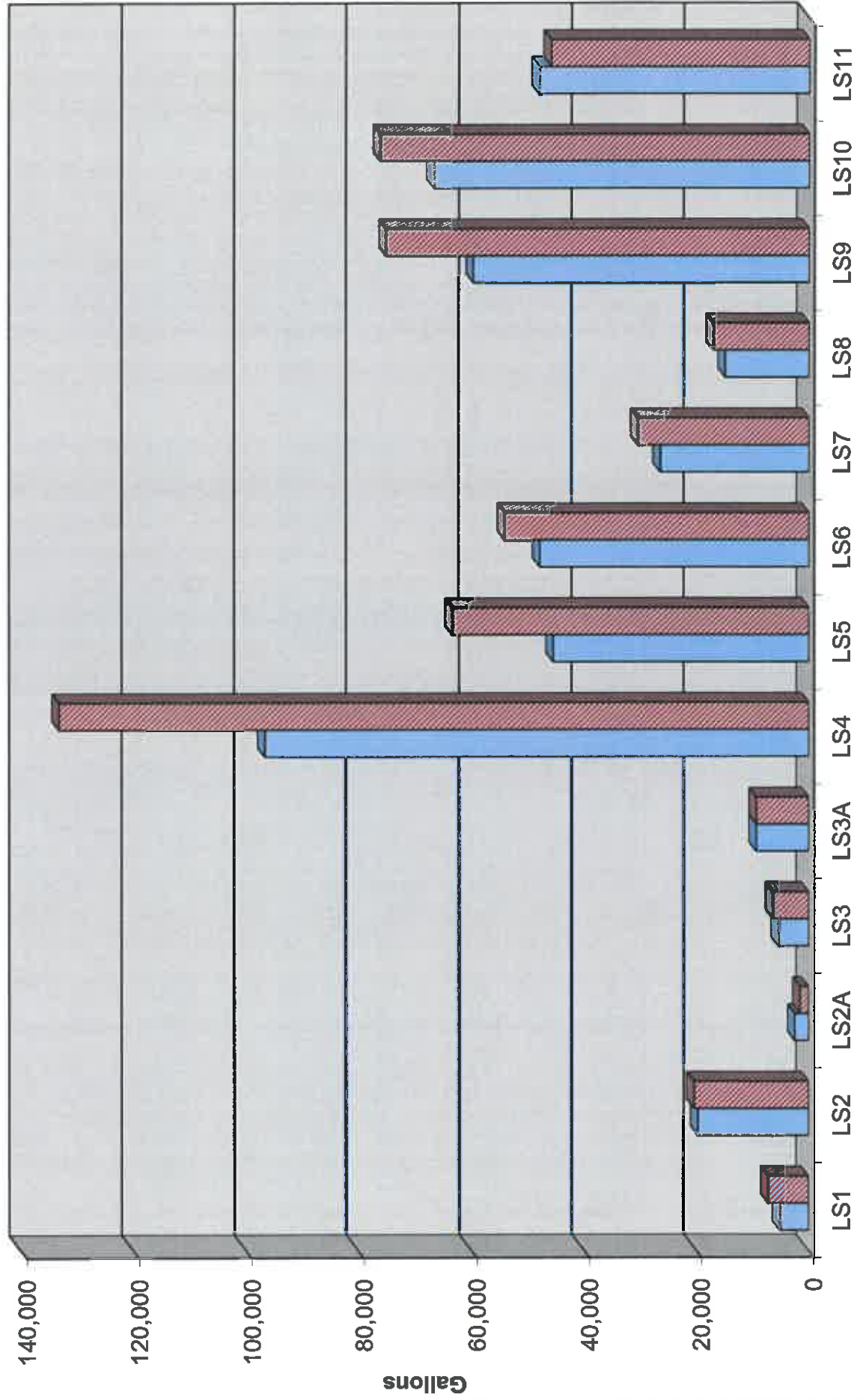
Wastewater Flow/Precipitation - November, 2020

◆ Wastewater Flow     
 ■ Precipitation

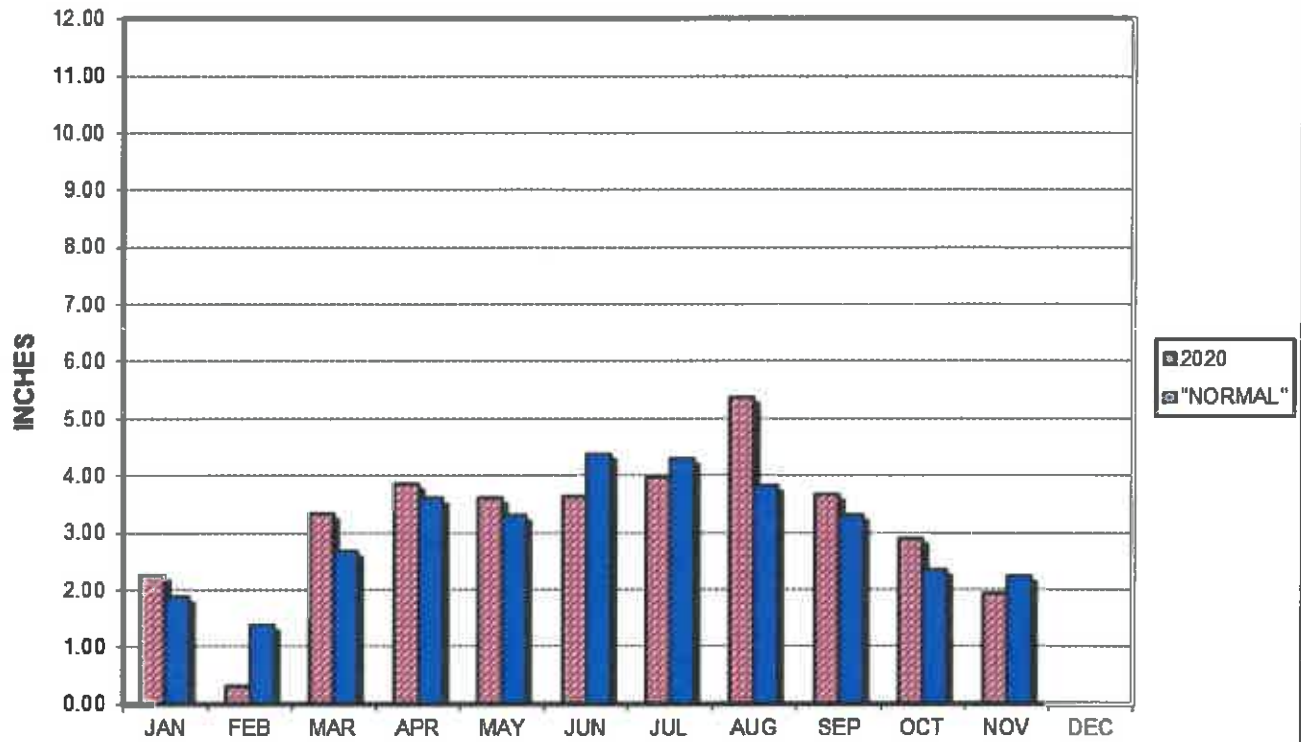


Average Daily Flow/Peak Flow by Area - November, 2020

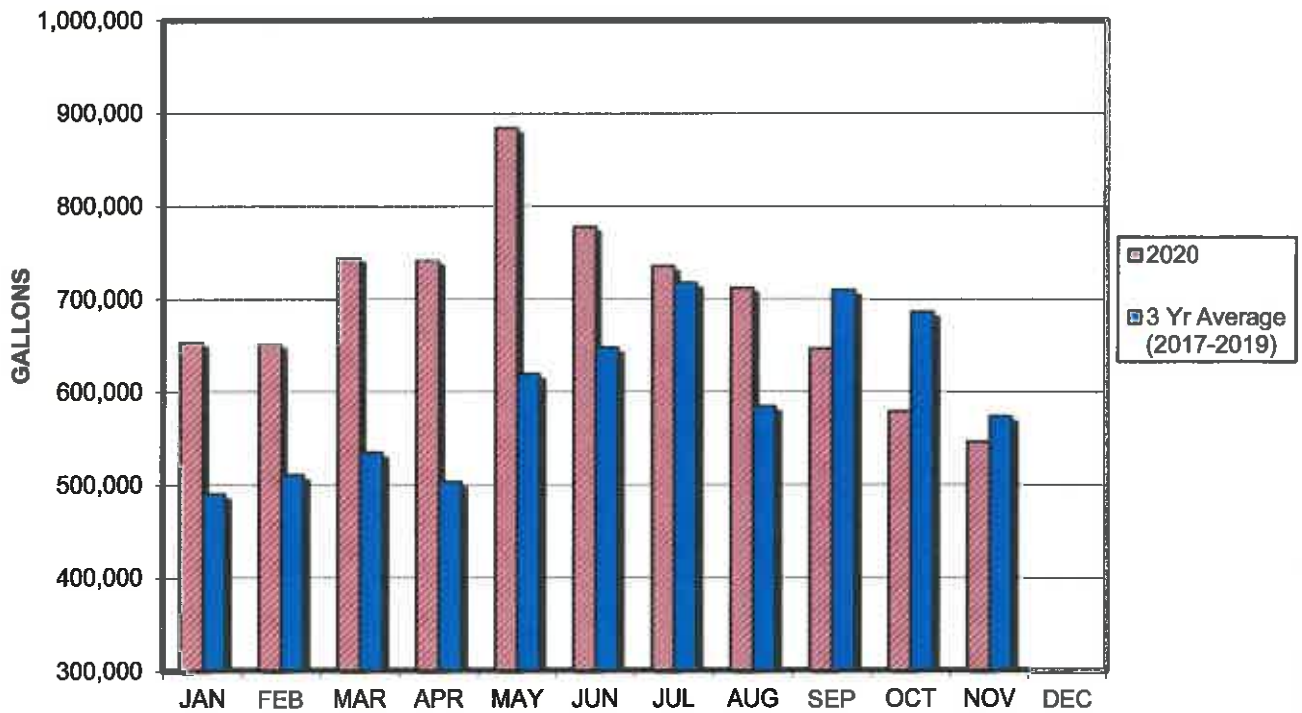
Average Peak



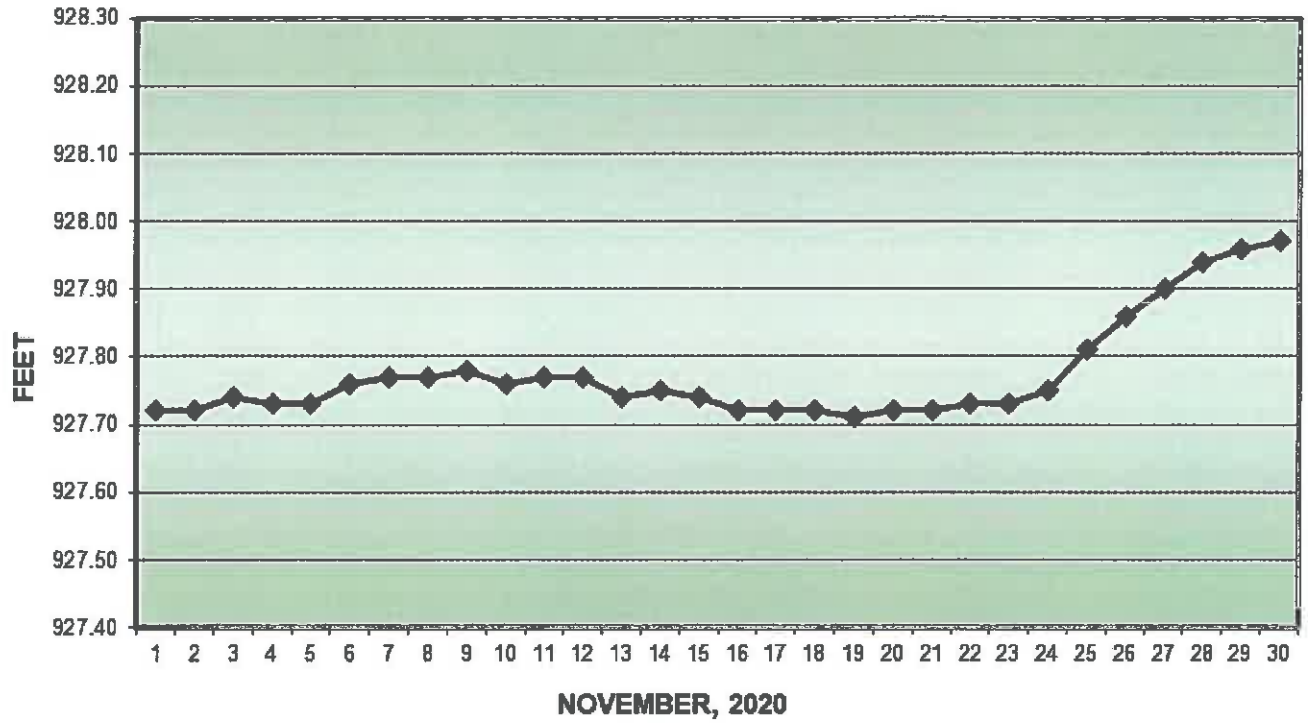
### PRECIPITATION - DELAVAN LAKE, WI



### AVERAGE WASTEWATER FLOWS



### LAKE ELEVATION - DELAVAN LAKE, WI



### AVERAGE LAKE ELEVATION - DELAVAN LAKE, WI

